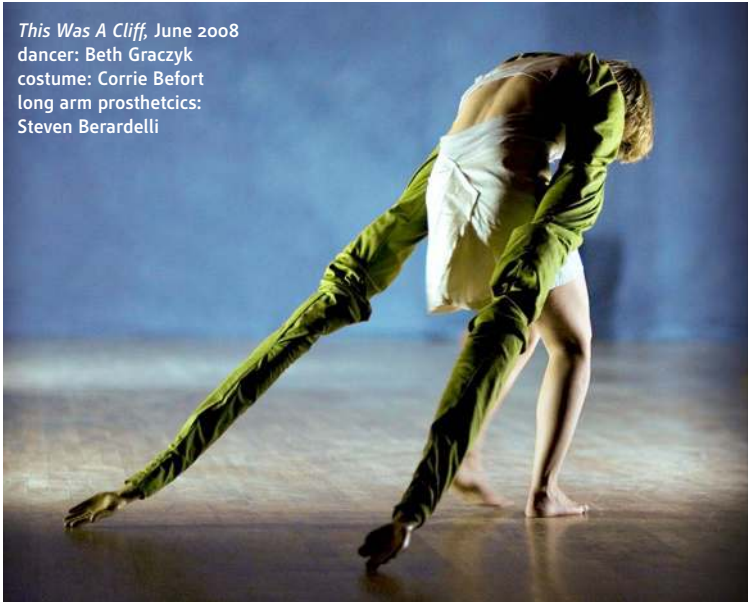


This Was A Cliff, June 2008
dancer: Beth Graczyk
costume: Corrie Befort
long arm prosthetics:
Steven Berardelli



dance artist/research specialist (American, b. 1978)

Beth Graczyk

one-to-one residency
Fri and Sat Sep 8, 9
2017

9:00-4:30 Individual hour-long
conversational meetings by appt:
610 683-6440

exhibition
<dance artifacts
2008-2017>
Fri Sep 8
thru Sun Oct 22

NAP Space Gallery, Kutztown
gallery hours: FRI/SAT/SUN 11:00-3:00

opening Fri Sep 8

6-9:00 PM artist reception
7:30 PM gallery talk

performance
Sat Oct 7
Beth Graczyk
+ Lindsay Head
<one of you is fake>

St. John's UCC, Whiteoak and West
Walnut Sts, Kutztown, 3rd floor
admission: pay what you want
7:00 PM performance followed
by a reception

Beth Graczyk sustains a dual
career as a performing choreog-
rapher and a published scientist.
For the past 15 years, Graczyk
has performed throughout the
United States and internation-
ally in Japan, Ecuador, France
and India. Concurrently, she has
contributed to nine science
publications in the field of
cancer research, including a first
author paper in Analytical
Biochemistry.

Graczyk co-directed the
Seattle-based company Salt
Horse (2008-2016) with Corrie
Befort and Angelina Baldoz, and
continues to work with Befort,
premiering a new work *Rose
Blue* in 2016 at Triskelion Arts in
New York and touring in 2017 to
BASE in Seattle. Additionally,

Graczyk collaborates as a

PHOTO: EFFYGRAPHY



"The inspiration for most of my solo
work comes from entering a
seemingly empty room and starting
a dialogue with it through the
modes of physical, observational
and tactile practices. What does the
space tell me and what is the effect
of my body on the space? Are there
elements in the room that can
inform the narrative? . . . I enter
these questions not through the
mind, but through activation of my
senses and the physical body."—BG

choreographer with Danish
director Torben Ulrich and with
composer/palliative care doctor
Hope Wechkin.

Since moving from Seattle to
New York in 2014, Graczyk has
shifted her focus to primarily
making work independently.
She has recently danced for Raja
Kelly, Sara Shelton Mann and
K.J. Holmes.

For her NAP exhibition, Beth
Graczyk will present artifacts in
the form of objects, costumes
and choreographic notes of a
series of dance solos that she
has made since 2008.

Graczyk's NAP performance
titled *One Of You Is Fake* is one
of 12 solo pieces comprising her
current project, "Desire Motor."

—more, page 8

newartsprogram.org

nnap
preview

since 1974

New Arts Program

One-to-one consultations

Presentations/Forums

Performances

Exhibitions

Television programs

Reference library/Archives

Publications

Office | Galleries | Archives
William Zimmer Reference Library
173 W. Main Street
P.O. Box 0082
Kutztown, PA 19530-0082

610 683-6440
napconn@gmail.com

HOURS: FRI/SAT/SUN 11:00-3:00
(other times call ahead or just
knock, we're here most days)

2017-2018 season

Welcome to our *NAP preview* events
calendar and our 43rd season.

Enjoy the read and see
you at the events.

**One-to-Ones and exhibitions are
free.** Most other events are free.
Venue locations and phone numbers
are listed on page 3. For inquiries
and for up-to-the-minute schedule
information call the NAP office:
610 683-6440.

Did you know that our residency
artists are available for private
one-to-one conversations? Find out
more about our One-to-Ones on
page 3. **Signup for One-to-Ones** by
phone (610 683-6440) or at the NAP
Kutztown office. Slots are limited to
12 per residency so sign up early.
Season signups begin September 1.

Occasionally we may have some
urgent news or a special event that
is announced via email. So next
time you write or call, give us your
email address—or just drop us an
email with "ADD ME" in the subject
line and we'll add you to our email
list. Please include your full name in
the body of your email. Send to:
napconn@gmail.com.



The New Arts Program is "a non-academic approach to a nonacademic subject, and it works!"
-Philip Glass, composer

2017-18 at a glance



fall

Sep 8, 9 (Fri, Sat)
Sep 8 (Fri)-Oct 22 (Sun)
Sep 8 (6-9:00 pm)
Oct 7 (Sat 7:00 pm)

BETH GRACZYK, choreographer/dancer
Residency <one-to-one conversational meetings by appt>
Exhibition <*Dance artifacts 2008-2017*>
Artist reception <gallery talk @ 7:30>
Performance: Beth Graczyk + Lindsay Head <*One of you is fake*> reception after

Sep 15 (Fri)-Dec 17 (Sun)
Dec 17 (1-3:00 pm)

THE PROJECT WALL—ideas in progress
RON SCHIRA, artist/critic <*Assembled paintings*>
Closing day artist reception <in tandem with Stefan Balog closing>

Nov 3, 4 (Fri, Sat)
Nov 3 (Fri)-Dec 17 (Sun)
Nov 3 (6-9:00 pm)
Dec 17 (1-3:00 pm)

STEFAN BALOG, painter, sculptor, graphic artist
Residency <one-to-one conversational meetings by appt>
Exhibition <*Primrdial thoughts*>
Artist reception <gallery talk @ 7:30>
Closing day reception <in tandem with Ron Shira Project Wall closing>

winter

Jan 12, 13 (Fri, Sat)
Jan 12 (Fri)-Feb 25 (Sun)
Jan 12 (6-9:00 pm)

JO MARGOLIS, visual artist <recipient 2018 juried solo residency>
Residency <one-to-one conversational meetings by appt>
Exhibition <*Reflections from the journey*>
Artist reception <gallery talk @ 7:30>

Jan 21 (Fri)-Apr 15 (Sun)
Apr 15 (1-3:00 pm)

THE PROJECT WALL—ideas in progress
CARLYN KLINE-COYLE, painter
Closing day artist reception <in tandem with Brian Washburn closing>

Mar 2, 3 (Fri, Sat)
Mar 2 (Fri)-Apr 15 (Sun)
Mar 2 (6-9:00 pm)
Apr 15 (1-3:00 pm)

BRIAN WASHBURN, painter
Residency <one-to-one conversational meetings by appt>
Exhibition <*Spring joint-works 2014-2016*>
Artist reception <gallery talk @ 7:30>
Closing day reception <in tandem with Kline-Coyle Project Wall closing>

spring - summer

Apr 20 (Fri)-Jul 15 (Sun)
Jul 15 (1-3:00 pm)

THE PROJECT WALL—ideas in progress
LISA ESHLEMAN FOSTER, painter
Closing day artist reception <in tandem with Salon of Small Works closing>

May 25 (Fri)-Jul 15 (Sun)
May 25 (6-9:00 pm)
Jul 15 (1-3:00 pm)

29TH ANNUAL INTERNATIONAL INVITATIONAL SALON OF SMALL WORKS
Exhibition
Artists reception
Closing day reception <in tandem with Foster Project Wall closing>

september 2017						
s	m	t	w	t	f	s
3	4	5	6	7	8	9
10	11	12	13	14	15	16
17	18	19	20	21	22	23
24	25	26	27	28	29	30

october						
s	m	t	w	t	f	s
1	2	3	4	5	6	7
8	9	10	11	12	13	14
15	16	17	18	19	20	21
22	23	24	25	26	27	28
29	30	31				

november						
s	m	t	w	t	f	s
5	6	7	8	9	10	11
12	13	14	15	16	17	18
19	20	21	22	23	24	25
26	27	28	29	30		

december						
s	m	t	w	t	f	s
3	4	5	6	7	8	9
10	11	12	13	14	15	16
17	18	19	20	21	22	23
24	25	26	27	28	29	30
31						

january 2018						
s	m	t	w	t	f	s
7	8	9	10	11	12	13
14	15	16	17	18	19	20
21	22	23	24	25	26	27
28	29	30	31			

february						
s	m	t	w	t	f	s
4	5	6	7	8	9	10
11	12	13	14	15	16	17
18	19	20	21	22	23	24
25	26	27	28			

march						
s	m	t	w	t	f	s
4	5	6	7	8	9	10
11	12	13	14	15	16	17
18	19	20	21	22	23	24
25	26	27	28	29	30	31

april						
s	m	t	w	t	f	s
1	2	3	4	5	6	7
8	9	10	11	12	13	14
15	16	17	18	19	20	21
22	23	24	25	26	27	28
29	30					

may						
s	m	t	w	t	f	s
6	7	8	9	10	11	12
13	14	15	16	17	18	19
20	21	22	23	24	25	26
27	28	29	30	31		

june						
s	m	t	w	t	f	s
3	4	5	6	7	8	9
10	11	12	13	14	15	16
17	18	19	20	21	22	23
24	25	26	27	28	29	30

july						
s	m	t	w	t	f	s
1	2	3	4	5	6	7
8	9	10	11	12	13	14
15	16	17	18	19	20	21
22	23	24	25	26	27	28
29	30	31				

about us

Welcome to NAP—the New Arts Program. Founded in 1974, the program is a 501(c)(3) nonprofit educational art resource library, museum, and exhibition space dedicated to providing a forum for the local public to interact with today's major artists from the literary, visual, and performing arts.

During its 43-year history, the New Arts Program (called the "Art Series Program" for its initial eight years) has brought over 700 cutting-edge visual, performing, and literary artists and critics from around the world to the doorsteps of the Lehigh Valley, Berks County, and Philadelphia.

Additional programs include internships, two monthly cable television programs, an art research and slide library, NAP archives, NAP Limited Print Editions, Live On Paper: Book Forms, and other publications.

residencies

Since 1974, artist residencies have been the cornerstone of the New Arts Program. Today's most provocative and insightful visual, performing, and literary artists and critics from around the world are invited to take part in residencies at the NAP Space and select regional venues.

Each residency includes two days of personal one-to-one conversational meetings between the residency guest and members of the general public lasting an hour each, plus an open dialog with a public audience in a presentation/performance and/or exhibition context. This access to major talents—with NAP as a conduit—cultivates direct dialogue between artists and the public.

—more, page 4

the project wall

ideas in progress

Ron Schira
*<assembled
paintings>*

**Fri Sep 15 thru
Sun Dec 17, 2017**

NAP Space Gallery foyer, Kutztown
gallery hours: FRI/SAT/SUN 11:00-3:00

reception Sun Dec 17

1-3:00 PM closing day reception in
tandem with Stefan Balog exhibition
closing

WHAT: The Project Wall is a dynamic visual dialogue presented on a 14-ft long wall leading to the main gallery on which an artist is invited to present or create an evolving body of work over the course of 12 weeks for the public to monitor and possibly collaborate. The Project Wall, unlike a regular exhibition, is a working space in flux. Projects are scheduled



to begin each September, January and April. Receptions are purposely held on the closing day of each project to encourage an artist/public dialog on the completed project.

DISCIPLINE: Artist/art critic

HOME BASE: Reading, Pa.

BACKGROUND: Ron Schira has been an active artist and arts advocate for the past forty-plus years and has a background in arts education. For the past two decades he has been a writer, curator, and art critic with articles and writings included in *Raw Visions* and *Art Matters* magazines. Since 1995 he has been art critic for the *Reading Eagle* newspaper



AP 36/50 (Assembled Painting 36 of 50), 2016, acrylic palette scraps applied to canvas board with acrylic medium, 7" x 5"

with over 1,200 articles published. Ron Schira on YouTube has recorded the local art scene with over 200 videos since 2007.

Schira studied painting at the Philadelphia College of Art in 1973; painting education at Yocum Institute of Arts Education (Wyomissing) 1968 through 1978; and at Berks Vocational Technical Schools he studied journalism, printing, and commercial art from 1970 to 1973.

Get social with Schira at:
www.YouTube.com/RonSchira
www.soundcloud.com/RonSchira
www.ronschira.blogspot.com

ARTIST COMMENTS: Over the course of 15 years, I have been collecting the scraps and peelings of acrylic paint from my palettes which are made of plastic trays or glass. The paint would peel easily from the hard surfaces in all manner of shapes and texture like a piece of dead skin. Not wanting to discard them and add one more wasteful and non-

degradable thing to our already suffering planet, I decided to save them in a large pretzel jar and re-use the scraps at a later date.

About four years ago, I began gluing them to canvases and boards to make nonrepresentational abstractions. The largest of these measure about 20 x 16 inches with the smaller pieces 5 x 7 inches on prepared boards. My NAP Project Wall will be comprised entirely of these smaller works.

A booklet documenting the project in progress is available free at the closing day reception or any time thereafter.

Reception coffee compliments of Global Libations

Exhibition funding in part through the generosity of local businesses

James F. L. Carroll
DIRECTOR

BOARD OF DIRECTORS

Emily A. Branch
James F. L. Carroll
Joanne P. Carroll
Lincoln Fajardo
Robert Flemming
Robert P. Metzger
Ted Ormai
Deb Schlouch
Harry L. Serio
Ellen Slupe
Bruce Wall
Ann-Sargent Wooster

Emeriti:

Bart Wasserman
William Zimmer

BOARD OF ADVISORS

Clytie Alexander
Robert Dick
Douglas Dunn
Jon Gibson
Philip Glass
Mary Griffin
Patricia Johanson
Mimi Johnson
Klaus Kertess
Michael Kessler
James Melchert
Andrew Miller
Meredith Monk
Ursula von Rydingsvard
Nancy Wolff, Esq

Emeriti:

George S. Barrell
John Cage
Kent Floeter
Keith Haring
Robert Stanley

RECOGNITION

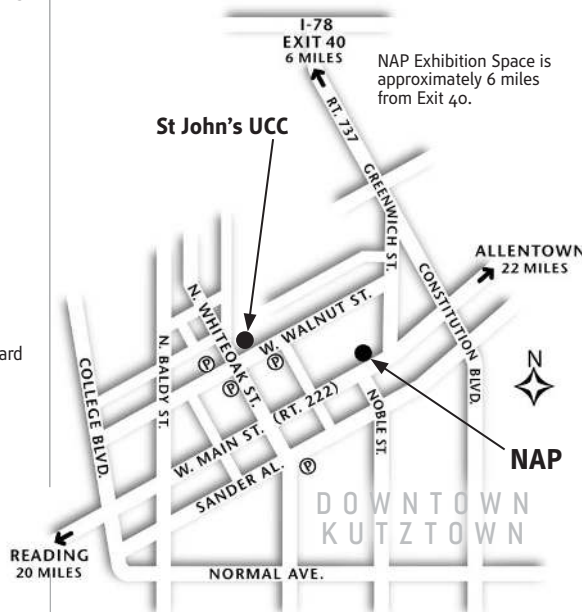
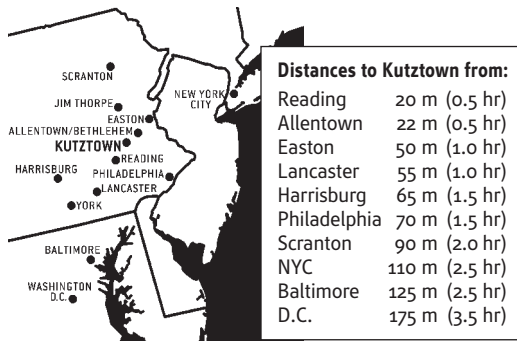
Ralph Bailits
Eileen Baxter
Steve Berardelli
Janice Carapellucci
Vicki DaSilva
David D'Imperio
Judy Geib
Mark Innerst
Kermit Oswald
Lisa Oswald
Tom Sterner

NAP preview editorial & design by John Lotte

New Arts Program Inc. is a public tax-exempt, not-for-profit corporation organized under the laws of the Commonwealth of Pennsylvania and section 501 (c)(3) of the Internal Revenue Code. All donations to the Program are tax-deductible to the extent allowed by law.

since 1974 New Arts Program

Lehigh Valley and Berks, PA



Venue information:

NAP Space Galleries & Office

173 W. Main St.
P.O. Box 0082, Kutztown, PA 19530-0082
610 683-6440

St. John's United Church of Christ

N. Whiteoak and W. Walnut Sts., Kutztown, PA 19530
For NAP events at St. John's please call 610 683-6440

Berks Community Television

1900 N. 13th St., Reading, PA 19604
610 374-3065

DUTV 54 (Drexel University)

3141 Chesnut St., Bdg 9B, Rm 4026
Philadelphia, PA 19104
215 895-2927

Manhattan Neighborhood Network

537 W. 59th St., New York, NY 10019
212 757-2670

more

about us, from page 3

one-to-ones

During most of our two-day residencies, up to twelve persons have the opportunity not only to reserve a one-hour time slot but also to determine the direction for a private conversation with the visiting artist—a walk, a chat over coffee, a presentation of their work (actual works, laptop, slides, video or, circumstances permitting, even a studio visit). Cross-disciplinary interaction is encouraged, for example, a painter with a dancer. One-to-Ones are free.

Each NAP season, One-to-One signups begin September 1 and continue through the two days of each residency. Sign up at the NAP office or call 610 683-6440. Only six time slots are available each of the two days, so sign up early. Participants should prepare an agenda for their conversation.

public presentations

On the first evening of each residency, the public is invited to a social hour of conversation with the guest artist, which could include a gallery talk, slides, video or audio, and/or, in certain instances, a performance. Performances and exhibitions are held in an intimate, relaxed public setting. The informality of a small community space encourages conversation.

exhibitions

Eleven months out of the year, our intimate galleries feature solo exhibitions of first-rate working artists from this country and abroad. Complimentary exhibition booklets, which include reproductions and a conversation with the residency artist, are available. Capping off each season is our popular international invitational salon exhibition.

the project wall

Inaugurated in 2013, **The Project Wall**—our newest exhibition area at 173 Main Street—gives the public an opportunity to view artists' ideas and work in progress—a situation normally absent in a formal gallery setting. The Project Wall is literally a wall surface—8 feet high by 14 feet wide—on which an invited artist presents a body of work that evolves over a 12-week period, sometimes with public collaboration.

The idea behind the Project Wall is to avoid being like a regular exhibition, but instead like a working surface or space in flux, meaning it could change through a playful use of materials and it could be altered. As a process it is raw, as each passing moment brings on change.

The Project Wall is a form of excitement and a way for artists to share their process—an ongoing experience that extends their passion to its viewers.

A booklet with photos documenting the time line of each 12-week project is available at the closing day reception or any time thereafter.

Artists interested in engaging with the Project Wall see page 14 (Call for Entries).

reference library

Housed within the NAP Space, the **William Zimmer Reference Library** is an artist's or researcher's dream. The public is invited to use its resources without charge. Open during gallery hours or by appointment.

Here you'll find:

BOOKS—Every subject imaginable for the artist.

PERIODICALS—Current and lots of back issues.

EXHIBITION CATALOGS—From around the country; around the world.

VIDEO ARCHIVE—Featuring NAP Video Festival winners and a
—more, page 5

painter, sculptor, graphic artist, author (Romanian, b. 1968)

Stefan Balog



Beginning, 2017, acrylic on canvas

PHOTO: GARRY LAURENT



"I still wonder all the time if I see something that doesn't exist, or if other people don't see something that exists." —SB

one-to-one residency Fri and Sat Nov 3, 4

9:00-4:30 Individual hour-long conversational meetings by appt:
610 683-6440

exhibition <primordial thoughts> Fri Nov 3 thru Sun Dec 17

NAP Space Gallery, Kutztown
gallery hours: FRI/SAT/SUN 11-3:00

reception Fri Nov 3

6-9:00 PM artist reception
7:30 PM gallery talk

closing day reception Sun Dec 17

1-3:00 PM reception in tandem
with Ron Schira Project Wall closing

Stefan Balog began exhibiting in 1993 and had his first one-artist exhibition in 1995. His paintings, sculptures and graphic art are represented in private and state collections in more than 30 countries. His notoriety took off as many galleries and museums where his work hung in predominantly group shows early on, began acquiring them for their permanent collections. His paintings are usually abstract although sometimes surrealistic imagery surfaces. His creative process is spontaneous, without too much thinking during the execution, because in Balog's opinion "excess of theories can kill the magic of creation."

Balog was cofounder (together with Ioan Hădărig and Robert Lixandru) in 1998 of the Inter-Art Foundation Aiud, following with the Inter-Art Galleries and the Inter-Art Contemporary Art Museum in Aiud. He serves as president of the Foundation which has become recognized as one of Romania's most important cultural organizations. One of the Foundation's main activities since its inception has been International Artcamp Aiud. Initiated by Balog in 1996, the camp is one of the most advanced art camps of its kind and

—more, page 10

more

about us, from page 4

collection of artist presentations recorded at the Program over the past thirty+ years.

SLIDE ARCHIVE—Over 50,000 slides of works by contemporary artists. On-site viewing facilities.

CONSULTING and technical assistance on studio and arts management, alternative and co-op spaces, housing, and mailings.

residency booklets

Beginning in 1997, each NAP exhibition and artist residency has been documented with a booklet which includes reproductions of the works and commentary by and about the artists. Exclusive transcripts from New Arts Alive TV conversations are often included. Booklets are available free of charge at events. A small fee is charged for booklets by mail or from prior residencies.

In order to include a full documentation, **Project Wall** booklets are unavailable until

the closing day reception of each Project Wall installation or any time thereafter.

group gallery tours

Call to arrange for a gallery tour for your group or to discuss other options available to groups or classrooms. Educators are encouraged to bring their classes—elementary through college. We can also visit your group or classroom for a presentation.

the NAP store

Where else can you find a Keith Haring poster for \$15?

5

... or a DVD on crating, packing, and shipping fine art? Gift certificates are available. The NAP Store catalog appears toward the end of this *Preview*.

open Sundays

In addition to our Friday and Saturday hours, the NAP galleries are open every Sunday during gallery season from 11:00-3:00, excluding holidays; no appointment necessary. We're actually here most days, so if you're in the neighborhood, give a ring or just knock.

—more, page 7

visual artist (American, b. 1944)

Jo Margolis

Recipient, Juried Solo Residency

one-to-one residency
Fri and Sat Jan 12, 13,
2018

9:00-4:30 Individual hour-long
conversational meetings by appt:
610 683-6440

exhibition
*<reflections from
the journey>*

Fri Jan 12 thru
Sun Feb 25

NAP Space Gallery, Kutztown
gallery hours: F/S/S 11:00-3:00

reception Fri Jan 12

6-9:00 PM artist reception
7:30 PM gallery talk

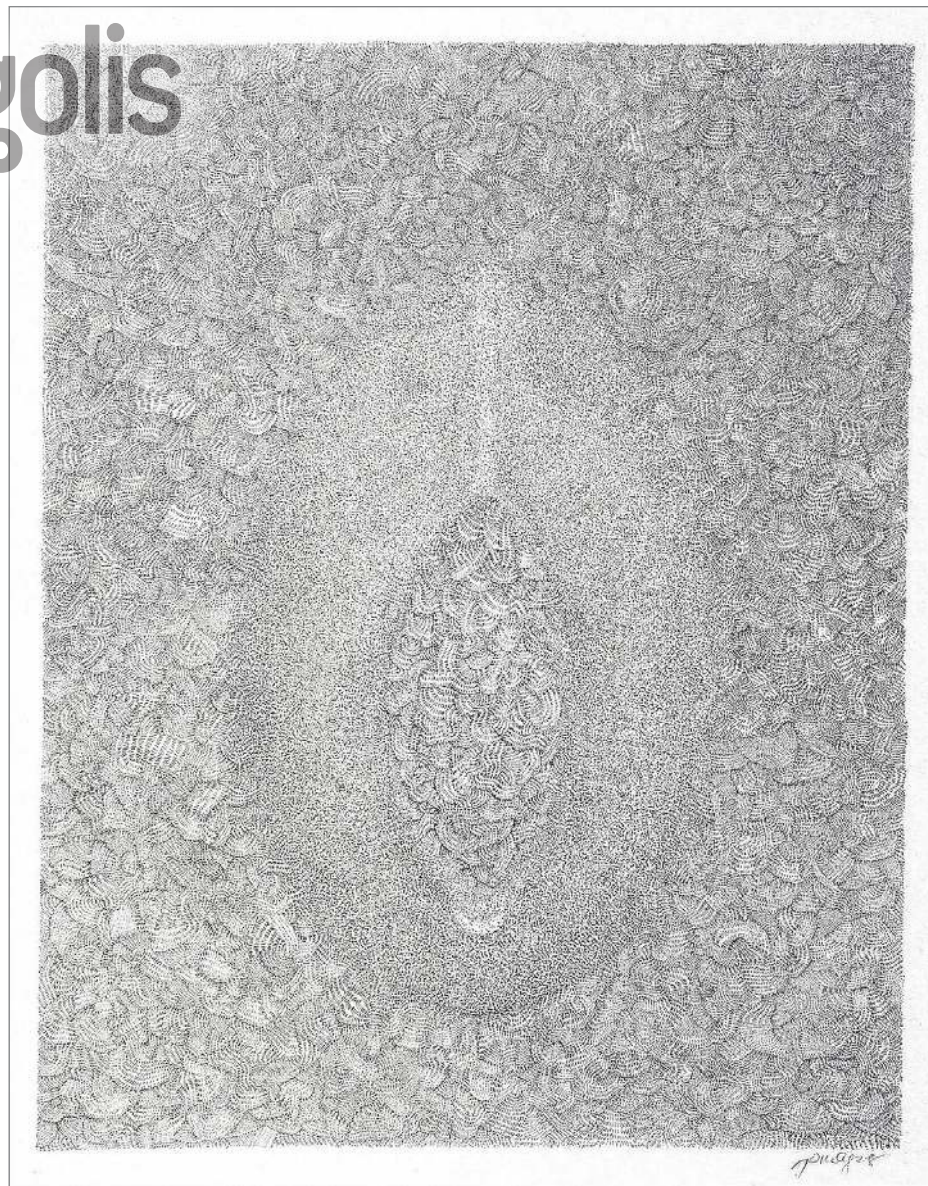
Jo Margolis has been exhibiting her award-winning works since 1997, when Philip Pearlstein, as juror for a group show at the Jewish Community Center in Pittsburgh, chose her entry as a prize winner. She shows widely in Southeastern Pennsylvania and Maryland and had her most recent one-artist show in 2016 at Delaplaine Art Center in Frederick, Md. In the past her entries have taken prizes at the Art of the State annuals at the State Museum of Pennsylvania. Outside the states, she recently participated in a group salon exhibition in Paris.

Margolis alternates between carving stone or wood with making amazing ultra-fine-line drawings on a variety of handmade papers with ink and graphite, inspired in part by old manuscripts and architectural motifs. She has five drawings in the Philadelphia Museum of Art's permanent collection as well as works in the collections of the Art Institute of Chicago and the Palmer Museum of Art/Pennsylvania State University, and numerous private collec-

tions in the U.S. and Europe.

Margolis's serious fine arts education began at the School of the Museum of Fine Arts, Boston, concentrating on printmaking during the '70-'71 school year. She is a graduate of the University of Pennsylvania Graduate School of Art (BFA '72, MFA '76, both in sculpture) where she studied sculpture with Bob Engman and Maurice Lowe.

Margolis will be in Inverness, California, for a three week residency sponsored by the Lucid Art Foundation in October 2017.



Emerging Form,
2015, ink on Arches
watercolor paper,
8.25" x 10.25"



"In the end, the purpose behind all of this mark making, the shapes, forms and textures, is to celebrate the efforts we make to understand, to document and to enrich our world. Pattern, space and shape are the letters, the verbs and the nouns of my visual world."—JM

A nice selection of Margolis's work, including her sculpture, can be seen on her website www.jomargolis.com

An exhibition booklet is available
Reception coffee compliments of
Global Libations

Exhibition funding in part through
the generosity of local businesses



Carlyn Kline-Coyle, *Aum Vine*, 2015, acrylic on wood panel, 50" x 40"

more

about us, from page 5

funding and support

The New Arts Program would not be in operation without the generous support of its individual, organization and business sustaining sponsors; foundations; and a supporting membership base which includes persons like yourself. Funding is also provided in part by the Pennsylvania Council on the Arts, a state agency, and the National Endowment for the Arts, a federal agency.

Every so often, the Program is blessed to have a prominent performing artist or group donate their time and talent for a gala

benefit performance. Recently composers Philip Glass and Jon Gibson performed together for us at Kutztown University's Schaeffer Auditorium.

Philip Glass, inarguably one of the greatest composers of our lifetime, has been a major advocate of the New Arts Program, engaging with us for ten benefit recitals since 1985 and inviting such luminaries as Allen Ginsberg and Jon Gibson to join him. Kudos too to Gibson for participating in what was his sixth NAP benefit concert.

Your attendance at these benefit events gives the New Arts Program a needed boost in our funding. They also serve as the perfect way to share the NAP experience with your friends, family and associates. □

the project wall

ideas in progress

Carlyn Kline-Coyle
<forgive and forget>

Fri Jan 21 thru
Sun Apr 15, 2018

NAP Space Gallery foyer, Kutztown
gallery hours: FRI/SAT/SUN 11:00-3:00

reception Sun Apr 15

1-3:00 PM closing day reception

WHAT: The Project Wall is a dynamic visual dialogue presented on a 14-ft long wall leading to the main gallery on which an artist is invited to present or create an evolving body of work over the course of 12 weeks for the public to monitor and possibly collaborate. The Project Wall, unlike a regular exhibition, is a working space in flux. Projects are scheduled to begin each September, January and April. Receptions are purposely



held on the closing day of each project to encourage an artist/public dialog on the completed project.

DISCIPLINE: Painter/instructor

HOME BASE: Drexel Hill, Pa.

BACKGROUND: Carolyn Kline-Coyle has participated in scores of juried exhibitions and invitationals across the state since she began exhibiting in 2000. Along the way she has received several outstanding awards, furthering her reputation while leading to spots as a guest juror, speaker, and visiting artist.

Kline-Coyle has an MFA from Pennsylvania Academy of the Fine Arts, Philadelphia. After completing their four-year Certificate

program, Kline-Coyle worked in specialty boutiques on South Street and Main Street in Manayunk and painted landscapes in oils depicting Philadelphia and its surroundings.

After the birth of her children, she left Philadelphia to be closer to her family in Lancaster. During this period she was influenced by the local Pennsylvania Dutch hex signs and Amish quilts with their attention to craftsmanship in their everyday life. She switched from painting in oils to acrylics and has exhibited her new work primarily in Southeastern Pennsylvania—of note, in Harrisburg at the Whitaker Center, in Reading at Goggleworks, and in Lancaster at the Keystone Art and Culture Center.

Kline-Coyle has been working in the field of special education since 2004. She is a certified Orton-Gillingham tutor for children with dyslexia and has been creating art with preschool and elementary students in summer camps since 2010. In addition she has taught adult classes in various painting and drawing disciplines.

ARTIST COMMENTS: I like to make things—drawings, paintings, three dimensional objects, clothes and so on. Language has become a focal point in my life. Working with children who use assistive technology to communicate or who learn specific strategies to decode and read words—and that those words are labels for specific people, places or things—has taught me to be as accurate and concise as possible with my words. My experience in the field of special education has given me the desire to explore the use of words and symbols whose meanings can facilitate understanding or communicate mystery and secrecy.

A booklet documenting the project in progress is available free at the closing day reception or any time thereafter.

Reception coffee compliments of Global Libations

Exhibition funding in part through the generosity of local businesses

painter (American, b. 1961)

Brian Washburn

Corrida, 2016, oil on paper, 39" x 48"

one-to-one residency
Fri and Sat Mar 2, 3

@ NAP Space, Kutztown

9:00-4:30 Individual hour-long
conversational meetings by appt:
610 683-6440

exhibition
<spring joint—
works 2014-2016>
Fri Mar 2
thru Sun Apr 15

NAP Space Gallery, Kutztown

gallery hours: FRI/SAT/SUN 11:00-3:00

reception Fri Mar 2

6-9:00 PM artist reception

7:30 PM gallery talk

closing day reception
Sun Apr 15

1-3:00 PM reception in tandem
with Carlyn Kline-Coyle closing



Brian Washburn is an exhibiting artist and, from 2000 to date, a director at the Washburn Gallery in New York City. Schooled in fine arts, he also trained as a commercial and decorative painter, and learned theatrical set techniques—plastering, glazing and spattering are all methods he employs in his work.

Washburn has been involved in every aspect of running the Washburn Gallery and serving the clients and represented artists along with the estates and foundations the organization represents. The gallery, a 57th Street institution since opening in 1971 and now temporarily housed at 745 Fifth Avenue, exclusively represents works by Jackson Pollock from the Pollock-Krasner Foundation. Exhibitions have been devoted to unusual facets of the careers of artists such as Stuart Davis, Charles Demuth, Burgoyne Diller and Arshile Gorky.

From 1993-2000 Washburn

was art director for Acadia Scenic Inc. where he helped stage and television designers execute their designs and bring them to reality producing samples for finishes and models for sculpture. Productions included MTV Video Music Awards, Radio City Music Hall, Metropolitan Opera House, VH1 Fashion Awards, Essence Awards, and Politically Incorrect with Bill Maher.

A native of New York City, he attended the High School of Music and Art. He studied at Rhode Island School of Design, 1980-1984, earning his B.F.A.

A selection of Washburn's paintings can be viewed at www.saatchiart.com.

An exhibition booklet is available

Reception coffee compliments of Global Libations

Exhibition funding in part through the generosity of local businesses



"Rather than attempt to mine meaning from cultural, political or historical contexts, I scavenge archetypal forms from the observed moments of my daily life—excavating imagery from among the piles of pictures cluttered into journals, unearthing unexpected contexts and new understandings of myself."—BW

beth graczyk

continued from page 1

Dancer **Lindsay Head** will accompany Graczyk at the NAP performance being held at St. John's UCC. The series' inaugural piece, *Beast*, was presented at Movement Research, CPR's Spring Movement Festival, Greenspace, and toured to the Harrisburg Dance Festival

(PA) and Corridor Festival (WA). In addition, *Beast* was selected for full production in Gibney's Work Up 3.3 program in NYC.

An exhibition booklet is available

Reception coffee compliments of Global Libations

Exhibition funding in part through the generosity of local businesses

the project wall

ideas in progress

Lisa Eshelman Foster
<melting pot>

**Fri Apr 20 thru
Sun Jul 15**

NAP Space Gallery foyer, Kutztown
gallery hours: FRI/SAT/SUN 11:00-3:00

reception Sun Jul 15

1-3:00 PM closing day reception in
tandem with Salon of Small Works
closing

WHAT: The Project Wall is a dynamic visual dialog presented on a 14-ft long wall leading to the main gallery on which an artist is invited to present or create an evolving body of work over the course of 12 weeks for the public to monitor and possibly collaborate. The Project Wall, unlike a regular exhibition, is a working space in flux. Projects are scheduled to begin each September, January and April. Receptions are purposely held on the closing day of each project to encourage an artist/public dialog on the completed project.



DISCIPLINE: Painter

HOME BASE: Newport, Vt.

BACKGROUND: Lisa Eshelman Foster has worked creatively her whole life, making an impact as a painter, sculptor, poet, theater set and costume designer, and stage actress. She describes her visual work as “colorful, sparkly, mystical, silly, unique, primitive, spiritual, modern and ancient, hated and loved.” “Family” is a reoccurring theme in her work, with fantastical images of people dominating her canvases.

Foster incorporates a huge array of mixed media in her pieces—from acrylic, oil, or enamel paint on canvas or paper, to Sculpey, cement, nail polish, plastic, wood, tin, glass, fabric, yarn, metal, blood, hair, gold, leaves, thread, stickers, glue, tape, ribbon, zippers and pins for starters. Her surfaces range from book pages to wall size canvases—her outstanding set designs expanding the painting field even further.

A '77 graduate of Kutztown State College with a painting major, Foster set up home and studio in New York

City the following year. She left New York in 1987 for Philadelphia where she lived briefly before moving back to Kutztown, eventually settling in Vermont in 2004. In Newport, her home since 2009, she spent several years as an elementary school educator and continues with her own art.

Lots to see on Foster's website:
www.lisafosterart.com.

ARTIST COMMENTS: For my Project Wall I intend to hang an 8-x-14-ft piece of gessoed canvas on the wall and paint it as if I were in my studio using acrylics and mixed media. I will build the piece around the idea of a blending of people, and engage the public in its creation. I will work on it for a few weeks beginning in April, then leave specific instructions on what and how I would like the public's cooperation, and come back at different intervals to finish it. I may use signatures or other relics that the public leaves me within the image. Parts will glow in the dark, parts will be cut and stitched, parts messy, neat, colorful, mysterious, plain, bothersome, symbolic and energetic. The completed piece will be available for sale.

A booklet documenting the project in progress is available free at the closing day reception or any time thereafter.

Reception coffee compliments of Global Libations

Exhibition funding in part through the generosity of local businesses



Lisa Eshelman Foster, *Bringing in the Sheaves*, 2017, oil on paper, acrylic, enamel, mixed gems on canvas, 3.5' x 4.5'

etc

NAP director available for school and group presentations

The New Arts Program has a knack for making today's arts exciting and approachable. In an educational culture where art often is given a back seat—especially as a career choice—it seems important that Lehigh Valley and Berks youth are given the chance to share the “NAP experience.”

James Carroll, director of the New Arts Program, and a former KU professor, is available to bring the NAP experience into public and private schools, high schools, colleges and universities, and social organizations.

His presentation underscores the ability of today's art to give students and adults a unique perspective of society and an insight into art's past. Topics can be tailored to your class or group.

To arrange a presentation for your classroom or group, contact Mr. Carroll at 610 683-6440 or napconn@gmail.com.



NAP 29th annual international invitational

salon of small works

above: A portion of the main gallery wall during the 2017 salon installation

call for entries

Any artist who has exhibited in an NAP Salon since 2013 is automatically sent an invitation via email or post by 03/01/18 inviting them to participate again. All others must apply. Instructions may be found on the "Call for Entries" page in this *Preview*.

Application deadline: April 1, 2018

**exhibition Fri May 25
thru Sun Jul 15**

NAP Space Gallery, Kutztown
gallery hours: FRI/SAT/SUN 11:00-3:00

**opening reception
Fri May 25**

6-9:00 PM artists reception

**closing day reception
Sun Jul 15**

1-3:00 PM reception in tandem
with Lisa Eshelman Foster Project
Wall closing

With 166 artists from 15 states and a whopping 53 international artists from 20 foreign countries represented at last season's salon, this is *the* summer exhibition to see. Our salon is a regional gallery goers' favorite. Opening night is a blast—it's always packed and lots of the exhibiting artists are on hand. Each artist is represented by one recent work measuring up to 200 sq. inches. There is tremendous diversity of styles and media, including video. And what a treat it is

seeing all this incredible international work.

Most works are for sale, reasonably priced, and already framed. Its nearly an impossibility to walk away without claiming at least one piece.

Artists interested in exhibiting, see **Call for Entries** in this *Preview*.

An exhibition booklet is available

*Reception coffee compliments of
Global Libations*

*Exhibition funding in part through
the generosity of local businesses*

stefan balog

continued from page 5

has artists from up to 110 countries attending every year.

Born in 1968 in Aiud, Romania, Balog finished his studies in the local "Bethlen Gabor" College in 1987. From 1992-1995 he attended the School of Art in Alba Iulia (Romania). He continued studies as an Art & Architecture student at the American University Bucharest, between

1997 and 1999. During the same period, he studied engraving techniques with Hungarian master engraver Kantor Janos.

Sample Balog's works at www.inter-art.ro/balog and find more at www.saatchiart.com.

An exhibition booklet is available

*Reception coffee compliments of
Global Libations*

*Exhibition funding in part through
the generosity of local businesses*

goodbye AOL

The New Arts Program has a new email address, we're now: **napconn@gmail.com**.

We don't send out many emails, but every so often we have something timely to share. So next time you write or call, give us your email address—or just drop us an email with "ADD ME" in the subject line and we'll add you to our email list. Please include your full name in the body of your email.

grab a bite or brew, get 10% off

On your next visit to the NAP Space, why not grab a bite at one of our supporting eateries. Show your NAP membership card. Some offer 10% off to NAP members any time. Check out the list of business sponsors on the last page of this *Preview*.

new arts alive on demand

The New Arts Program produces two live one-hour TV programs every month that are televised to over 110,000 cable households in the Berks County area and streamed live over www.bctv.org. Rebroadcasts can be seen in Philadelphia and New York City. Over 450 programs have been produced at Berks Community TV in Reading since our first airing in 1988.

Our flagship series, **New Arts Alive**, features a single guest—a painter, sculptor, writer, poet, critic, architect, choreographer, dancer, musician, composer, performance artist, curator, or gallery dealer—in conversation about their passion of how and why they do what they do.

In 1992, a second series was added—**NAP Connection**—which features a two- or three-person panel who discuss an arts-related topic. Both shows are rebroadcast as noted below.

Available anywhere

Streamed live on www.bctv.org:
FIRST Wednesdays 6:00 pm
FOURTH Wednesdays 7:00 pm

In Berks County, tune in BCTV twice monthly for live broadcasts:

FIRST Wednesdays 6:00 pm
(Repeats that Fri 9:00 pm;
Sat 5:00 pm; Sun 8:00 am)

FOURTH Wednesdays 7:00 pm
(Repeats that Fri 10:00 pm;
Sat 6:00 pm; Sun 9:00 am)

BCTV availability:

- Comcast Reading/Hamburg Channel 13
- Comcast Oley Channel 4
- Service Electric Cablevision Channel 19 (Birdsboro, Fleetwood, Kutztown)

In Philadelphia, on Drexel's DUTV-54 (Comcast Cable and Urban Cable Works)—Pre-recorded broadcast every Tuesday at 10:00 am.

In NYC, on Manhattan Neighborhood Network, Channel 1—Pre-recorded broadcast on alternate Sundays at 7:00 am.

streamed live

James Carroll hosts both NAP shows with **Ron Schira** subbing on occasion. No matter who James or Ron has on board as a guest—or what the topic—the conversation is guaranteed to be thought provoking. Viewers can join the dialogue by phone during the live BCTV telecasts. Dial in live at 610 378-0426.

Shows are streamed live on the Web at www.bctv.org. Plus you can go to bctv.org's archive ANYTIME to watch recent broadcasts or shows from earlier seasons.

on-demand

The BCTV archives are back! It is now called **On-Demand**. That's exciting news, especially if you did not have access to the NAP shows on cable in the past. To access:

Go to www.bctv.org. Under today's date, on the BCTV home page, put the name of the program you want and click on "GO." Twelve months of those programs will show up with the most recent on top.

To go back prior to 2009, you must then click on "options." Aside of the word "media" is a box that reads "all" with an arrow. Drop the arrow

down to HTML and click. Go to the box that reads: "starting on" and change 1 year ago to 8 years ago and click enter and you will get all the back programs with the most recent on top.

These instructions are also along the right side of the "On-Demand" page: "How to Search" from previous seasons.

Television program funding in part by the Pennsylvania Council on the Arts, Berks Community Television, local businesses, and individuals



from left:
Thomas Buckner,
Dale O'Dell, Matthias Kaul,
Brooke Larsen, and
Ron Schuebrook

10 years back

Return with us to the '07-'08 NAP season. Joining us then were:

Thomas Buckner
baritone vocalist

Dale O'Dell digital photo artist

Matthias Kaul
composer/musician

Brooke Larsen painter

Ron Schuebrook painter

This season we were fortunate to be visited by five powerhouse artists who at this juncture in their careers had already achieved international acclaim.

For decades **Thomas Buckner** has championed music of the avant-garde in America and throughout the world as a performer, producer and

promoter. The baritone has appeared solo at venues the likes of Carnegie Hall and Lincoln Center. In 1983, Buckner began a long association with composer Robert Ashley, recording and performing lead roles in Ashley's most acclaimed operas. To sample his singing and to learn more about Bruckner's activities visit: www.thomasbruckner.com.

Matthias Kaul began his musical career as a rock and jazz drummer and has since attained worldwide recognition as a composer and percussionist. Kaul and vocalist Thomas Bruckner performed together as part of their NAP residencies on October 11 at St. John's UCC. Sample Kaul on YouTube.

Since 1979, photo digital artist **Dale O'Dell** has exhibited

in over one-hundred group and solo shows, has published fifteen art books, and has written for most of the leading photographic magazines and journals. One of his earliest digital images made history in 1983 when it became the first wholly computer-generated image used in advertising. View O'Dell's imagery at: www.daleodell.photoshelter.com.

Painter **Brooke Larsen** has exhibited at many of New York City's top-ranked galleries, including O.K. Harris, 109 Crosby Street Gallery, and the Vera Engelhorn Gallery—where he's had four one-artist exhibitions since 1992. Admired particularly for his poetic use of watercolor, he has been featured in the N.Y. Times, Art News, Arts Magazine, Art Beat and on MTV. Larsen graduated from the University of Washington in —more, page 12

nap thrift shop

new and used artist materials and other goodies for sale—Shop September-July

NAP Space, Kutztown
During gallery hours
No mail orders

NAP is not holding its Annual Yard Sale this season, but artists looking for good deals on artist materials, books and equipment can still strike gold at the NAP Thrift Shop. An array of items is available during gallery season and the list is constantly changing. Below are some of the bargains we have right now. The latest list of new and used donated items available for sale is posted at the gallery. Profits benefit the New Arts Program.

Assortment of metal and wood frames—\$2.00 ea

Gold leaf metal frame with glass, 8 $\frac{1}{8}$ x 13" with 2 $\frac{1}{4}$ " matt—\$20.00

Arches Aquaralle natural white, 400 lb rough, 22 x 30" [retail \$20.00]—\$15.00 ea
five or more sheets [only 24 left]—\$13.00 ea

Arches Cover, buff, 22 x 30"—\$4.00 sheet [only 8 left]

Cotton canvas, 9oz, 72" wide—\$7.00/yd

Jerry's cotton duck, 15oz: 96" wide—\$16.00/yd

Utrecht cotton duck, 15oz: 76" wide—\$12.00/yd

Utrecht cotton duck, 15oz: 60" wide—\$10.00/yd

Cotton canvas, 15oz double weave: 76" wide [retail \$19.00/yd]—\$12.00/yd

Cotton canvas, 15oz double weave: 60" wide [retail \$15.00/yd]—\$10.00/yd

SoHo #33 linen, 15.1oz: 82.67" wide—\$28.00/yd

SoHo #38 linen, 14.1oz: 66.9" wide—\$19.00/yd

SoHo #42 linen, 12.7oz: 66.9" wide—\$14.00/yd

Pan pastels—50% off retail

New Radius toothbrushes [retail \$10]—\$5.00 ea

Grommets—\$5.00/container [15 large containers available]

40 $\frac{1}{2}$ " Logan Simplex matt cutter #700SGM, never used [retail \$299]—\$95.00

Air gun and cup, never used [retail \$150]—\$95.00

Used video cassette recorder/players:

JVC HR-DV53U MiniTV \leftrightarrow SVHS—\$30.00

JVC HR-VP59U HiFi VHS 4-head, 19 u head—\$25.00

EPIC HiFi VHS Go Video dual deck—30.00

Ambico video speakers, set of 2—\$10

Edit suite: Videonics-A/B-1 roll edit controller, never used [retail \$200]—\$40.00

Haring posters last chance

We're letting the last of our Keith Haring concert posters go at thrift shop prices, so we thought why not include them in our thrift shop. There are two designs, separated by six years—1984 and 1990, *pictured at right*. Signed '84s sold out at \$600, but you can have the exact same poster (minus sig.) for \$15. You might try striking a deal buying both years.

Item donations wanted

Do you have books, art supplies, materials, cameras, nice frames, or working electronics lying around or in storage? Drop off items anytime during gallery hours or call 610 683-6440 to make special arrangements for pickup or drop off. Donations are tax-deductible.

Kodak slide trays—\$3.00 ea [15]

Misc. cameras and equipment, electronic equipment, and more—make an offer

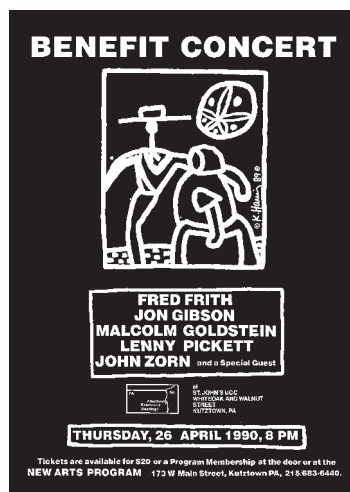
Books—\$.50 ea

Golden Artist Colors "Just Paint" publications—free

1990 Keith Haring silkscreened poster "Benefit Concert" [22"h x 17"]—\$15

1984 Keith Haring offset poster "The Kutztown Connection" [33"h x 20"]—\$15

below: Keith Haring's poster graphic dates from 1989, the concert 1990; *at right:* poster for a 1984 NAP benefit event at Symphony Space in NYC. Either poster is \$15.



10 years back

continued from page 11

1968 and from Yale University in 1971 with a BFA and MFA in painting. In 1994 he joined the faculty of the School of Visual Arts where he still teaches. View a selection of Larsen's work at: www.brookelarsen.com.

Another painter, Canadian artist and arts administrator **Ron Shuebrook**, wraps up our '07-'08 season. His paintings, drawings, prints, and wall constructions have been widely acquired internationally by public galleries, museums, and corporations. You can see a retrospective of his work at www.olgakorpergallery.com.

Interested in more flashbacks? For an overview of NAP's history since 1974, look for the **NAP Synopsis** booklet (PDF) on our website or ask for a printed copy at the NAP Gallery during your next visit.

does your employer gift match?

Partnering with your employer through their matching gift program lets you DOUBLE your gift to the New Arts Program.

Employees, directors, retirees, and spouses are usually eligible. Follow these three easy steps to participate in an employer's matching gift program:

1. Find out if your employer matches gifts to nonprofit 501 (c)(3) orgs and if you or family members qualify.
2. Obtain a matching gift form from your employer's personnel office.
3. Send both the completed matching gift form and your personal gift to: New Arts Program, P.O. Box 0082, Kutztown PA 19530-0082

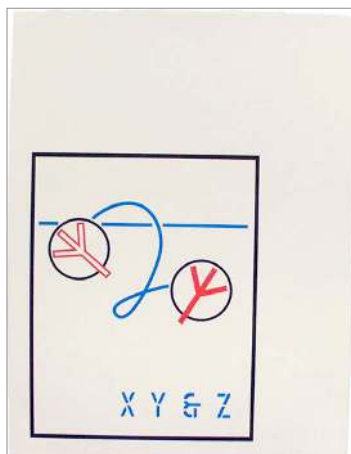
fine art finds

signed limited edition prints from NAP collection for sale

We recently sold the last of our John Cage prints, but New Arts holds many other contributed art works that are intended for sale. Like the Cage prints, most of these are from the **NAP Limited Print Editions** collection which consists of over 60 editions by cutting-edge visual and performing artists created between 1979 and 2007 including an edition by famed choreographer Bill T. Jones.

These works by composers, architects, choreographers, sculptors, painters and critics were created during residencies at the New Arts Program. Many were individually hand painted or otherwise altered by the artists and are remarkable for their ingenuity and idiosyncratic use of the medium. The small print runs of etchings, lithos, monotypes, and silk-screen prints number somewhere from two to 25 per signed edition.

Private collector, corporate, gallery, and museum inquiries are welcome. Call or email us



Lawrence Weiner, untitled, 2007, archival Epson print on handmade cotton paper, 15" x 12"

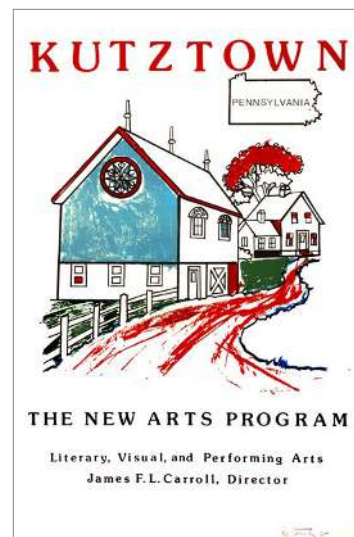
and we'll fax or email you a complete list of works. Discount pricing is available to NAP members. Sales benefit the NAP. Please call for an appointment. You won't leave empty-handed!

Signed prints or other works by the following artists are for sale:

Roberta Allen, sculptor
Robert Ashley, musician/composer
Connie Beckley, sculptor
Johanna Boyce, choreographer/dancer
Glenn Branca, musician/composer
John Cage, composer (sold out)

Ping Chong, multimedia
Efrain deJesus, painter
Tullio Desantis, artist
Peter Eisenman, architect
Molissa Fenley, choreographer/dancer
Ellen Fisher, performance artist
Jon Gibson, musician/composer
Jeremy Gilbert-Rolfe, painter/critic
Malcolm Goldstein, musician/composer
Peter Gordon, musician/composer
Edgar Grana, musician/composer
Denise Green, painter
Marcia Hafif, painter
Keith Haring, painter (unsigned only)
Bill T. Jones, choreographer/dancer
Ralph Lemon, choreographer/dancer
Frank Lima, poet

Alvin Lucier, musician/composer
Joseph Masheck, art historian/critic
Steven Paul Miller, poet
Michael Morin, printmaker
David Moss, musician/composer
Steve Poleskie, artist
Lucio Pozzi, sculptor
David Shapiro, poet/critic
Irene Stein, artist
Barbara Strawser, painter
Valentine Tatransky, art historian/critic
Valery Taylor, sculptor
Julius Tobias, sculptor
Bernard Tschumi, architect
Maryann Unger, sculptor
Peter Van Riper, musician/composer
Ursula Von Rydingsvard, sculptor
Lawrence Weiner, painter
Arnie Zane, photographer/dancer/choreographer



Robert Stanley, *Kutztown*, 1985, 4-color offset print, 41" x 26"

collectible posters

Along with our limited-edition print collection, the Program currently offers some attractively priced collectible posters, including two **Keith Haring** editions and the one above by **Robert Stanley**. We love this striking 1985 Stanley edition, available signed and unsigned. It's a big one—looks great in any office setting.

Purchase posters in person at the NAP Gallery or via mail order from our **NAP Store**. Pricing and order details on page 15.

keep it rolling

State and federal funding for the arts is in short supply, so individual support is crucial to keeping unique organizations like the NAP afloat. By becoming a New Arts Program supporting member, you help us continue to make the following opportunities available *free to the public*:

- Conversational one-to-ones with guest artists
- Exhibitions and exhibition booklets
- In-house use of professional art research library
- This events calendar

Additionally supporting members receive:

- Free admission to performances (excludes benefit concerts)
- Discount on prints and artwork (some exceptions)
- Art research library borrowing privileges
- Satisfaction of keeping the New Arts Program rolling

NAP supporting member application

Check one: ☐ \$30 NAP annual member
☐ \$50 NAP annual family member (two adults & children)

I am enclosing an additional tax-deductible gift to support NAP's goals:
☐ \$200 ☐ \$150 ☐ \$100 ☐ \$ _____

☐ I wish this gift to be used exclusively for the NAP Endowment Fund.
☐ I wish to remain anonymous.

NAME _____

ORGANIZATION/OCCUPATION/DISCIPLINE _____

ADDRESS _____

CITY/STATE/ZIP _____

EMAIL _____

PHONE (_____) _____

13

Send with check to: New Arts Program, POB 0082, Kutztown PA 19530-0082

call for entries

visual artists

NAP 29th annual international invitational salon of small works

WHAT: The culmination of the NAP season, this exhibition had 166 works last time and has always been well-attended. Artists are invited to submit one recent original work, measuring up to 200 sq. inches. Sale of work is encouraged and no commission.

EXHIBIT DATE: May 25-July 15, 2018

LOCATION: 173 W. Main Street, Kutztown, Pa.

EXHIBITOR FEE: \$5 (no fee to apply)

APPLICATION AND ACCEPTANCE

DEADLINE:

In our hands by April 1, 2018

TO BE CONSIDERED: Any artist who has exhibited in an NAP Salon since 2013 need not reapply and will automatically be sent an entry form via email or post by 03/01/18. All others must apply.

TO APPLY: Submit the following:

- Complete contact information including email address
- Artist statement (not resumé): Explain the thinking behind the work and describe what the work process is about—One page typed.
- 10 copies of your work—inkjet, laser, or 8 x 10 photo prints; jpegs on DVD accepted; no slides. DVD, for film/video. Examples should demonstrate a dedication to the continuance of a body of work.
- For return of photos, enclose a self-addressed stamped envelope.

RESTRICTIONS FOR INVITED ARTISTS:

- One work per artist
- Work completed within the past two years
- Size limit: 200 square inches, including frame

- Work must hang on a wall (except film/video)
- Video and film entries must be on DVD, 14 minutes or less, including credits (screening accommodations provided)
- Artist pays postage/freight costs, both ways
- Work must be delivered and removed in person or by carrier on dates to be specified

SUBMIT TO:

NAP Exhibitions, P.O. Box 0082
Kutztown PA 19530-0082

MORE INFO: 610 683-6440
napconn@gmail.com

visual artists

NAP residency and solo exhibition juried competition

WHAT: Artists nationwide are again invited to compete for a residency/solo exhibition at the New Arts Program Gallery. One artist is chosen to receive the following:

- Two-day NAP residency with one-to-one conversations with public
- Six-week exhibition
- Opening/artist reception
- Gallery talk by artist on reception night
- Press releases
- Write-up/photos in NAP press
- Appearance on *New Arts Alive* cable TV program broadcast live from Reading, Pa., taped broadcasts on Philadelphia and NYC cable
- Exhibition booklet with visuals
- \$550 honorarium plus lodging
- Insurance coverage of exhibited work

EXHIBIT/RESIDENCY DATE: Jan. 2020

LOCATION: 173 W. Main Street, Kutztown, Pa.

APPLICATION FEE: \$30 Waived for current NAP members (Payable in U.S. dollars by money order or check through a U.S. bank.)

ENTRY DEADLINE: In our hands by October 30, 2018. Decision notification in December 2018.

TO ENTER: Send fee and all of the following:

- Cover letter: Include complete contact information incl. email address—One page typed.
- Artist statement (not resumé): Explain the thinking behind the work and describe what the work process is about—One page typed.
- 10 copies of your work—inkjet, laser, or 8 x 10 photo prints; jpegs on DVD accepted; no slides. DVD, for film/video. Examples should demonstrate a dedication to the continuance of a body of work. Label back of each print with:
 - 1) artist's name
 - 2) title of work
 - 3) dimensions: $h \times w (\times d)$
 - 4) arrow indicating top
 - 5) number 1-10 corresponding to typed list
- Typed list of works identified 1-10 as above; include title; date; medium; dimensions: $h \times w (\times d)$
- SASE for return of materials
- Do not send additional items

SUBMIT TO:

NAP Exhibitions, P.O. Box 0082
Kutztown PA 19530-0082

MORE INFO: 610 683-6440
napconn@gmail.com

visual artists

the project wall—installation invitation

WHAT: The Project Wall is a dynamic visual dialogue presented in the foyer of the New Arts Program Space. There, the invited artist is given an empty wall panel 8 feet high by 14 feet on which to present or create an evolving body of work that is given a 12-week duration in which to reach its culmination. The Project Wall is unlike a regular exhibition,

but rather a working space in flux. Three Wall installations are presented annually. Each artist is responsible for the following:

1. *Wall installation*—The artist presents or creates an evolving body of work over a 12-week duration ending with an artist reception on closing day.
2. *TV conversation with artist*—Each artist participates in a live NAP TV broadcast. The program takes place during the same month their Project Wall begins.
3. *Project documentation*—Each artist is required to photograph all significant project changes or occurrences during the 12-weeks. These images are included in an artist booklet documenting the project.

EXHIBIT DATES: Three 12-week Projects annually, beginning in September, January, April.

LOCATION: 173 W. Main Street, Kutztown, Pa.

APPLICATION FEE: None.

ENTRY DEADLINE: None. The artist selection process is ongoing.

TO APPLY: Interested artists should chat with James Carroll (610-683-6440) prior to making their submission. Submit the following on a USB stick or DVD. Include hardcopies:

- One-page essay (approximately 350 typed words) describing how you intend to develop the Project Wall. It may be helpful to write in the third person to emphasize how the *work* would be speaking as opposed to writing about oneself.
- Brief biography and brief narrative vita
- Headshot photo of yourself (hi-res jpeg)
- 15-20 images (hi-res jpeg) of your most pertinent work from the past 3-4 years with emphasis on the current year.

SUBMIT TO:

NAP Exhibitions, P.O. Box 0082
Kutztown PA 19530-0082

MORE INFO: 610 683-6440
napconn@gmail.com

the nap store

We reserve the right to limit quantities. All items also available for purchase in person at the NAP gallery.

"Crating, Packing and Shipping Art" DVD—our top seller

The most thorough, professional, reliable documentation of its kind—a must for any artist or curator.

CRATING, PACKING AND SHIPPING details various crate types and includes an invaluable segment on "markings for shipping." Produced by the New Arts Program and directed by David O'Connell of OCS Packing & Crating, the DVD is packed with trade secrets you can't find anywhere else. Printed transcript included. 80-minutes.

DVD \$30. ITEM #1011

VHS \$20. CLOSEOUT ITEM #1012

The Art of Kent Floeter

BUILDING FLATNESS, THE ART OF KENT FLOETER—Painter Kent Floeter (1900-2004) oversaw the creation of this monograph that, in both beauty and craft, is a benchmark of book publishing. Text contributions by Chuck Close and Raymond Ryan. Published in 2003 by Stephen David Editions Ltd, NY. 12.5"w x 11"h x 1," 208 pages with 139 full-page color reproductions.

HARDCOVER \$65. ITEM #1016

+ \$10. S&H U.S. only

Robert Stanley signed poster

We love this striking 1985 edition, available signed and unsigned.

Looks great in any office.

See reproduction on page 12.

STANLEY POSTER (41"H X 26")

SIGNED \$600. ITEM #1044

STANLEY POSTER (41"H X 26")

UNSIGNED \$20. ITEM #1045

+ \$20. S&H U.S. only, one or more

Out-of-print

Publications of the New Arts Program. Our stash of these OOP gems is vanishing—when they're gone, they're gone.

DANCE ON PAPER—Color catalog for 2001 exhibition held at Lehigh University. Visual works by over 50 choreographers. 53 pages.

SOFTCOVER \$9. ITEM #1035

IN AND OUT OF KUTZTOWN, 1974-1981

—A classic portrait of the first seven years of the New Arts Program. Over two inches thick! A keeper. 427 pages.

SOFTCOVER \$30. ITEM #1033

+ \$10. S&H U.S. only

IN AND OUT OF NEW YORK—Catalog for 1980 NAP exhibit held at White Column in NYC with works by former Kutztown University students who lived and worked in NYC. 40 pages.

SOFTCOVER \$4. ITEM #1034

PRINTS OF NON-PRINTMAKERS

—Catalog for 1988 exhibition held at Lehigh University—works by musicians, choreographers, and architects created through NAP Editions. 22 pages.

SOFTCOVER \$4. ITEM #1036

JULIUS TOBIAS: WORK FROM 1965 TO 1992

—Exhibition catalog. 48 pages.

SOFTCOVER \$4. ITEM #1037

N.A.P.TEXT(s)—Literary journal loaded with stimulating writing, poetry, and visuals by literary, visual, and performing artists. #1-3 are exquisite 16-page booklets; #4-6 are in a stylin' folded poster format. (#7 sold out)

PER ISSUE \$3. ITEM #1031



Always in style

Choose from two classic Keith Haring designs or Lawrence Weiner's "Bridge" graphic silk-screened on back. All shirts, NAP logo on the front. Heavyweight 100% pre-shrunk cotton. Specify white or black for Keith Ts.

Specify S, M, L, XL, XXL

BRIDGE (WHITE) \$20. ITEM #1021

KEITH HEART \$20. ITEM #1022

KEITH SCARECROW \$20. ITEM #1023

All shirts—
NAP logo on front

New! Keith Haring "Farmer & Wife" design! Black or white T

© K. Haring

Sellout alert

In 1989 Keith Haring created a graphic for a concert poster screen printed the next year. A few of these remain—flea market priced . . . ditto the oversized 1984 "Kutztown Connection" benefit poster with Keith's iconic heart graphic. Check them out on page 12 or in person at the NAP Gallery.

1990 HARING SILKSCREENED POSTER

(22"H X 17") \$15. ITEM #1042

1984 HARING OFFSET POSTER

(33"H X 20") \$15. ITEM #1043

+ \$20. S&H U.S. only, one or more

Keith Haring in action documented on DVD

KEITH HARING DVD—In 4 segments.

Part 1: Kutztown native Haring in 1982 working on five different drawings (30 min). Part 2: 29-sec. Haring animation originally shown in Times Square. Part 3: His 9/10/87 opening at NAP Exhibition Space—documented here—drew over 750 people. Keith spent nearly five hours hanging with the crowd! Part 4: A 45-min public presentation by Haring captured in 1982 completes this Haring collection. Printed transcript included. 86-minutes.

DVD (2-DISC) \$33. ITEM #1013

VHS \$15. CLOSEOUT ITEM #1014



Glass, Gibson, Ashley, Reich, 6 others on music CD

CD CONNECTION is an exclusive NAP collection of instrumental and vocal works by some of new music's most influential composers. Each work was personally selected by its composer for this disc. Features the first ten musician/composers who had residencies at the New Arts Program: Philip Glass, Steve Reich, Jon Gibson, Meredith Monk, Robert Ashley, Malcolm Goldstein, Joan La Barbara, Connie Beckley, Peter Van Riper and Glenn Branca. Released 1996.

LIMITED-EDITION CD \$20. ITEM #1015

NAP gift certificates

For the artist or art lover in your life. Gift certificates can be applied to membership, artworks, NAP Thrift Shop items, and NAP Store items. \$25. (no S&H fee) **ITEM #1050**

NAP store orders

ITEM #	ITEM NAME OR HELPFUL DESCRIPTION	SIZE/ COLOR	QTY	COST PER ITEM	TOTAL
_____	_____	_____	_____	\$ _____	\$ _____
_____	_____	_____	_____	\$ _____	\$ _____
_____	_____	_____	_____	\$ _____	\$ _____
_____	_____	_____	_____	\$ _____	\$ _____
_____	_____	_____	_____	\$ _____	\$ _____
_____	_____	_____	_____	\$ _____	\$ _____
_____	_____	_____	_____	\$ _____	\$ _____
MERCHANDISE TOTAL					\$ _____

SHIPPING AND HANDLING: Unless item is marked, apply the following fees:

1 item \$3. | 2-3 items \$4.50 | 4 or more items \$6. \$ _____

Shipping is U.S. only. Out-of-country ordering, please call 610 683-6440.

TOTAL AMOUNT DUE (add merchandise + shipping) \$ _____

Make check payable to: *New Arts Program*

NAME _____

ADDRESS _____

CITY/STATE/ZIP _____

PHONE (_____) _____ EMAIL _____



New Arts Program support

The New Arts Program would not be in operation without the generous support of:

sustaining sponsors



Estate of Janet Goloub

Long, Barrell & Co. Ltd.

Certified Public Accountants
135 N. Prospect, Reading, Pa.
610 779-6000

Sorrelli Jewelry

220 W. Main St, Kutztown, Pa.
610 894-9857

White Crow Paper Mill

Custom Papermakers
Fleetwood, Pa. 610 944-9061

LOCAL ORGANIZATIONS

St. John's United Church of Christ
Kutztown, Pa.

FOUNDATIONS

Foundation for Contemporary Performance, NYC

Greenwich Collection Ltd.

Meet the Composer, NYC

Funding for Meet the Composer Inc. is provided with the support of the Pennsylvania Council on the Arts, ASCAP, the Virgil Thompson Foundation, and the National Endowment for the Arts

Phaedrus Foundation, NYC



This project was supported by the Pennsylvania Council on the Arts, a state agency, through its regional arts funding partnership, Pennsylvania Partners in the Arts (PPA). State government funding for the arts depends upon annual appropriation by the Commonwealth of Pennsylvania and support from the National Endowment for the Arts, a federal agency. PPA is administered in this region by the Berks Art Council.

business sponsors

Please patronize these local businesses who have been supporting the New Arts Program. Some offer discounts to our members.

Adam n' Eve Boutique

309 W. Main Street, Kutztown
Tu-F 10:00-6:00, Sa 10:00-5:00
610 683-8117

Audiology and Hearing Aid Service

114 S. Loral Street, Kutztown
Virginia Grim 610 683-6108

Berkleigh Eye Care

Marlon G. Burt, O.D.
93 Constitution Blvd., Kutztown
610 683-3888

Betty's

bettyswraps.com
129 W. Main Street, Kutztown
610 621-2642
Wraps, smoothies, salads, soups

Cagefreedesign.com

Fine art, digital restoration, photography
Emily Branch 610 413-9565

Campus Inn

Old Route 222, Kutztown
610 683-8721

Colorfin LLC

PanPastel.com | SofftArt.com
Headquarters in Kutztown
484 646-9900
Makers of PanPastel™ ultra-soft painting pastels and Sofft™ Tools, fine art and craft tools

East Penn Manufacturing

Lyon Station 19536-0147

First National Bank in Fleetwood

Main & Franklin Sts, Fleetwood
610 944-7676

Global Libations

546 Noble St., Kutztown
484 646-9683
Roasting the finest fair-trade/organic coffee daily
10% off order with NAP mem. card

Cheryl A. Haughney REALTOR®

LV and Berks residential specialist
Berkshire Hathaway/
Fox & Roach, REALTORS®
484 225-9437

Main Street Inn

Boutique Hotel
401 W. Main Street, Kutztown
610 683-0401

Mark's Sandwich Shop

123 W. Main Street, Kutztown
7 days a week / 10:00-10:00
610 683-3626
"A Kutztown tradition since 1966"

Mr. Food Convenience Store

342 W. Main Street, Kutztown
7 days a week / 6:30 am-11:00 pm
610 683-7315

Pretty Dirty Ladies Inc.

prettydirtyladies.com
Toll-free 1-877 944-2211
Garden design and maintenance

Radius

radiustoothbrush.com
1-800 626-6223

SOS Business Machines Inc.

28 S. Center Avenue, Leesport
M-F 9:30-5:00
610 926-1299
Canon copier/fax sales, service, supplies

Silver Maple Veterinary Clinic

silvermaplevet.com
Route 222, Kutztown
610 683-7988
Dogs, cats, ferrets, horses

Uptown Espresso Bar

466 W. Main Street, Kutztown
M-F 7:00 am-9:00 pm
Sa 8:00 am-7:00 pm
610 683-6401
10% off order with NAP mem. card

Let's stick together. If you are a local business, call now and be included here.

NAP supporting members

To these supporting members, a special *thank you* for their devotion to the NAP. Renewing or joining during the past season are:

Barry Assed and
Eileen Assed

Francis Beaty and
Peggy Light

Joe Beddall and
Vivienne Wildes

Ray Beddall

Gordon C. Boardman

James and Joanne
Carroll

Lisa Eshleman Foster

Douglas Fowler and
Diana M. Ludwig

Stan Gregory and
Meryl Cohen

Virginia Grim

Valerie Breaux Haaf
and Emilie Breaux
Haaf

Matthew Hamilton

Fred Heffner

Jeff and Jo Horning

Dennis Johnson

John Landis and
Barbara Schulman

Linda LeFevre

John Lotte and
Cheryl A. Haughney

JoAnne Matthews

Jody Matthews

Robert McCormick

Elizabeth Miller McCue

Christine I. Oaklander

Jan L. Olinick and
Stephen Olinick

Ted Ormai

Karen Palcho and
Terry Griffith

Robert Pepper and
Kristen Orgera

S.O.S. Business
Machines

Deborah L. Schlouch
and Barry Schlouch

Ellen Slupe

Cindy A. Strunk

Gene Viera

Luke Wynne

Samuel S. Yoder, VMD

Brian Washburn

We're looking for new blood. Page 13 has an application for membership.