

nap preview

New Arts Program Inc. is a public tax-exempt, not-for-profit corporation organized under the laws of the Commonwealth of Pennsylvania and section 501 (c)(3) of the Internal Revenue Code. All donations to the Program are tax-deductible to the extent allowed by law.

welcome

This is our events calendar for the 2019-2020 season. Enjoy the read and see you soon.

One-to-Ones and exhibitions are free. Most other events are free too. For inquiries and up-to-the-minute schedule information call 610-683-6440.

Have you seen either of our two TV series, **New Arts Alive** or **NAP Connection**? You'll become addicted once you do. See page 10 for steps to find them on demand.

Occasionally we may have some urgent news or a special event that is announced via email. So next time you write or call, give us your email address—or just drop us an email with “ADD ME” in the subject line to **napconn@gmail.com**. Include your full name in the body of your email.

about

Founded in 1974, New Arts Program is a 501(c)(3) nonprofit educational art resource library, museum, and exhibition space dedicated to providing a forum for the local public to interact with working artists from the literary, visual, and performing arts.

During its 45-year history, New Arts Program (called the “Art Series Program” for its initial eight years) has brought over 700 cutting-edge visual, performing, and literary artists and critics from around the world to the doorsteps of the Lehigh Valley, Berks County and Philadelphia.

Additional programs include internships, two monthly cable television programs, an art research and slide library,

—more, page 2

chances are you've been missing out

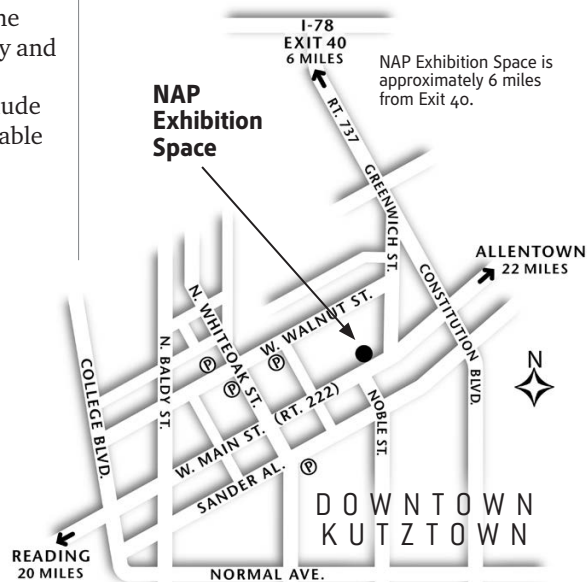
One-to-One conversations are at the heart of the New Arts Program. During each residency there are a limited number of hour-long time slots available for private conversations with the visiting artist. One-to-Ones are **free** but **reservations are required**. You determine the direction of your meeting—a walk, a chat over coffee, a presentation of your work (actual, laptop, video or, circumstances permitting, even a studio visit). Cross-disciplines encouraged; a painter with a dancer for example. Especially if you are serious about your artistic ambitions, these One-to-Ones are a must.

Reservations in person or call 610-683-6440. Reservations open September 1 and continue until fully booked. And, please don't wing it, prepare an agenda for your conversation.



Distances to Kutztown from:

Reading	20 m (0.5 hr)
Allentown	22 m (0.5 hr)
Easton	50 m (1.0 hr)
Lancaster	55 m (1.0 hr)
Harrisburg	65 m (1.5 hr)
Philadelphia	70 m (1.5 hr)
Scranton	90 m (2.0 hr)
NYC	110 m (2.5 hr)
Baltimore	125 m (2.5 hr)
D.C.	175 m (3.5 hr)



NAP preview editorial & design by John Lotte

James F. L. Carroll
 DIRECTOR

BOARD OF DIRECTORS

Emily A. Branch
 James F. L. Carroll
 Joanne P. Carroll
 Lincoln Fajardo
 Robert Flemming
 Susan Lange
 Robert P. Metzger
 Ted Ormai
 Deb Schlouch
 Harry L. Serio
 Ellen Slupe
 Ann-Sargent Wooster

Emeriti:

Bart Wasserman
 William Zimmer

BOARD OF ADVISORS

Clytie Alexander
 Robert Dick
 Douglas Dunn
 Jon Gibson
 Philip Glass
 Mary Griffin
 Patricia Johanson
 Mimi Johnson
 Klaus Kertess
 Michael Kessler
 James Melchert
 Andrew Miller
 Meredith Monk
 Ursula von Rydingsvard
 Nancy Wolff, Esq

Emeriti:

George S. Barrell
 John Cage
 Kent Floeter
 Keith Haring
 Robert Stanley

RECOGNITION

Ralph Bailits
 Eileen Baxter
 Steve Berardelli
 Janice Carapellucci
 Vicki DaSilva
 David D'Imperio
 Judy Geib
 Mark Innerst
 Kermit Oswald
 Lisa Oswald
 Tom Sterner

about

from page 1

NAP archives, NAP Limited Print Editions, Live On Paper: Book Forms, and other publications.

residencies

Since 1974, artist residencies have been the cornerstone of the New Arts Program. Today's most provocative and insightful visual, performing and literary artists and critics take part.

Each residency includes two days of personal one-to-one conversational meetings between the residency guest and members of the general public lasting an hour each. On the evening of day one, our guest conducts an open dialog with a public audience in a presentation/performance and/or exhibition context. This access to major talents—with NAP as a conduit—cultivates direct dialogue between artists and the public.

one-to-ones

One-to-one conversations are at the heart of the New Arts Program. During each residency there are a limited number of hour-long time slots available for private conversations with the visiting artist. One-to-Ones are free—details on page 1.

public presentations

On the first evening of each residency, the public is invited to a social hour of conversation with the guest artist, which could include a gallery talk, slides, video or audio, and in certain instances, a performance. Performances and exhibitions are held in an intimate, relaxed public setting. The informality of a small community space encourages conversation.

exhibitions

Eleven months out of the year, our intimate galleries feature solo exhibitions of first-rate working artists from America and abroad. Complimentary artist booklets, which include reproductions and conversations with residency artists, are available. Capping off each season is our popular international invitational salon exhibition.

the project wall

Since 2013, **The Project Wall** has given the public an opportunity to see artists' ideas and work in progress—a situation normally absent in a formal gallery setting. Physically, The Project Wall is a wall surface in the foyer gallery—8' high by 14' wide—on which an invited artist presents a body of work that evolves over a 12-week period, often with public collaboration.

The Project Wall avoids being like a regular exhibition, but instead is a working surface—a space in flux as each passing week brings on change.

A booklet including photos documenting the time line of each 12-week project is available at the closing day reception or any time thereafter.

Artists interested in engaging with the Project Wall see page 17 (Call for Entries).

reference library

Housed within the NAP Space, the **William Zimmer Reference Library** is an artist's and researcher's dream. The public is invited to use its resources at no charge. NAP members have exclusive borrowing privileges. Open gallery hours and by appointment.

Included in the collection are the personal libraries of artist Anne E. Neimann Hubbard and deceased critic/writer Bill Zimmer.

Here you'll find:

BOOKS—Every subject imaginable for the artist.

PERIODICALS—Current and lots of back issues.

EXHIBITION CATALOGS—Dating back 40 years, from here and abroad.

VIDEO ARCHIVE—Featuring NAP Video Festival winners and a collection of residency presentations recorded at the over the past 30+ years. On-site screening.

SLIDE ARCHIVE—Over 50,000 slides of works by contemporary artists. On-site viewing facilities.

CONSULTING and technical assistance on studio and arts management, alternative and co-op spaces, housing, and mailings.

residency booklets

Beginning in 1997, each NAP exhibition and artist residency has been documented with a booklet which includes reproductions of the works and commentary by and about the artists. Exclusive transcripts from "New Arts Alive" TV conversations are often included. Booklets are available free of charge at events. A small fee is charged for booklets by mail or from prior residencies.

In order to include a full documentation, **Project Wall** booklets are unavailable until the closing day reception of each Project Wall installation or any time thereafter.

group gallery tours

Call to arrange for a gallery tour for your group or class. Educators are encouraged to bring their classes—elementary through college. We can also schedule a visit to your group or classroom for a presentation.

nap tv

New Arts Program produces two live one-hour TV programs every month—**New Arts Alive** and **NAP Connection**. Both series are streamed live and

available on demand at bctv.org. Over 450 episodes have been produced since our first airing in 1988 and over 170 can now be viewed on demand. Just about every NAP residency artist is invited to do an episode to present and talk about their work. Find out more on page 10 ... and catch up.

the NAP store

Where else can you find a Keith Haring poster for \$15? Gift certificates are available. The NAP Store catalog appears toward the end of this *Preview*.

open Sundays

In addition to our Friday and Saturday hours, our galleries are open Sundays during our season from 11:00-3:00, except holidays. We're actually here most other days, so if you're in the neighborhood, give a ring or just knock.

funding and support

New Arts Program would not be in operation without the generous support of its individual, organization and business sustaining sponsors; foundations; and a supporting membership base which includes persons like yourself. Funding is also provided in part by the Pennsylvania Council on the Arts, a state agency, and the National Endowment for the Arts, a federal agency.

Every so often, the Program is blessed to have prominent performing artists donate their time and talent for a benefit event. In April 2019 composer/musicians Philip Glass and Jon Gibson performed for an audience of 400 in Kutztown to benefit NAP. Glass, one of the greatest composers of our time, has been a longtime advocate of New Arts Program, engaging with us for eleven benefit concerts since 1985.

Your attendance at these events gives the New Arts Program a needed boost in our funding. They also serve as the perfect way to share the NAP experience with family, friends and associates. □

2019-2020 at a glance

newartsprogram.org



fall

GEORGE SHORTESS visual artist/teacher
 Exhibition: THE PROJECT WALL <Neural Hallway>
 Artist reception <reception in tandem with Margery Amdur closing>

Sep 6 (Fri)-Dec 15 (Sun)
 Dec 15 (Sun 1-3:00)

LUKE WYNNE photographer
 Residency <one-to-one conversational meetings by appt>
 Exhibition <STRUCTURE>
 Artist reception <gallery talk with Wynne @ 7:30>

Sep 13, 14 (Fri, Sat)
 Sep 13 (Fri)-Oct 27 (Sun)
 Sep 13 (Fri 6-9:00)

MARGERY AMDUR visual artist
 Residency <one-to-one conversational meetings by appt>
 Exhibition <Blind Site>
 Artist reception <gallery talk with Amdur @ 7:30>
 Closing day artist reception <reception with Amdur in tandem with George Shortess Project Wall reception>

Nov 1, 2 (Fri, Sat)
 Nov 1 (Fri)-Dec 15 (Sun)
 Nov 1 (Fri 6-9:00)
 Dec 15 (Sun 1-3:00)

winter

BEVERLEE LEHR ceramic sculptor <recipient 2020 NAP juried solo residency>
 Residency <one-to-one conversational meetings by appt>
 Exhibition <Late Ceramic Wall Work>
 Artist reception <gallery talk with Lehr @ 7:30>

Jan 17, 18 (Fri, Sat)
 Jan 17 (Fri)-Mar 1 (Sun)
 Jan 17 (Fri 6-9:00)

spring - summer

LIZ WHITNEY QUISGARD visual artist
 Exhibition <Fiber Works>
 Opening reception

Mar 13 (Fri)-Apr 26 (Sun)
 Mar 13 (Fri 6-9:00)

31ST ANNUAL INTERNATIONAL INVITATIONAL SALON OF SMALL WORKS
 Exhibition
 Artists reception
 Closing day reception

May 22 (Fri)-Jul 12 (Sun)
 May 22 (Fri 6-9:00)
 Jul 12 (Sun 1-3:00)

september 2019						
s	m	t	w	t	f	s
1	2	3	4	5	6	7
8	9	10	11	12	13	14
15	16	17	18	19	20	21
22	23	24	25	26	27	28
29	30					

october						
s	m	t	w	t	f	s
		1	2	3	4	5
6	7	8	9	10	11	12
13	14	15	16	17	18	19
20	21	22	23	24	25	26
27	28	29	30	31		

november						
s	m	t	w	t	f	s
					1	2
3	4	5	6	7	8	9
10	11	12	13	14	15	16
17	18	19	20	21	22	23
24	25	26	27	28	29	30

december						
s	m	t	w	t	f	s
1	2	3	4	5	6	7
8	9	10	11	12	13	14
15	16	17	18	19	20	21
22	23	24	25	26	27	28
29	30	31				

january 2020						
s	m	t	w	t	f	s
			1	2	3	4
5	6	7	8	9	10	11
12	13	14	15	16	17	18
19	20	21	22	23	24	25
26	27	28	29	30	31	

february						
s	m	t	w	t	f	s
						1
2	3	4	5	6	7	8
9	10	11	12	13	14	15
16	17	18	19	20	21	22
23	24	25	26	27	28	29

march						
s	m	t	w	t	f	s
1	2	3	4	5	6	7
8	9	10	11	12	13	14
15	16	17	18	19	20	21
22	23	24	25	26	27	28
29	30	31				

april						
s	m	t	w	t	f	s
			1	2	3	4
5	6	7	8	9	10	11
12	13	14	15	16	17	18
19	20	21	22	23	24	25
26	27	28	29	30		

may						
s	m	t	w	t	f	s
					1	2
3	4	5	6	7	8	9
10	11	12	13	14	15	16
17	18	19	20	21	22	23
24	25	26	27	28	29	30
31						

june						
s	m	t	w	t	f	s
	1	2	3	4	5	6
7	8	9	10	11	12	13
14	15	16	17	18	19	20
21	22	23	24	25	26	27
28	29	30				

july						
s	m	t	w	t	f	s
			1	2	3	4
5	6	7	8	9	10	11
12	13	14	15	16	17	18
19	20	21	22	23	24	25
26	27	28	29	30	31	

Grassy Network, 1982, watercolor and ink on paper, 5" x 7"

the
project wall
 ideas in progress

visual artist/teacher
 (American, b. Baltimore, 1932)

George Shortess

exhibition <Neural Hallway>
 opens Fri Sep 6, 2019

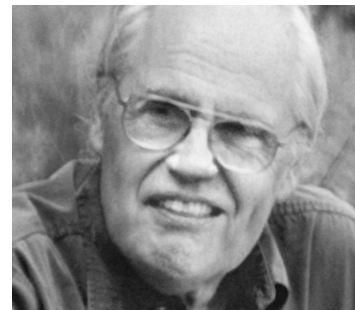
NAP Gallery foyer, Kutztown
 hours: FRI/SAT/SUN 11-3:00

reception and
 closing Sun Dec 15

1-3:00 PM artist reception in
 tandem with Margery
 Amdur exhibition closing

The Project Wall is a dynamic visual
 dialogue presented on a 14-ft long
 wall leading to the main gallery on
 which an artist is invited to present or
 create an evolving body of work over
 the course of 12 weeks for the public
 to monitor and possibly collaborate.
 Receptions are held on the closing
 day of each project to encourage an
 artist/public dialog on the completed
 project. A booklet documenting the
 project in progress is available free at
 the closing or any time thereafter.

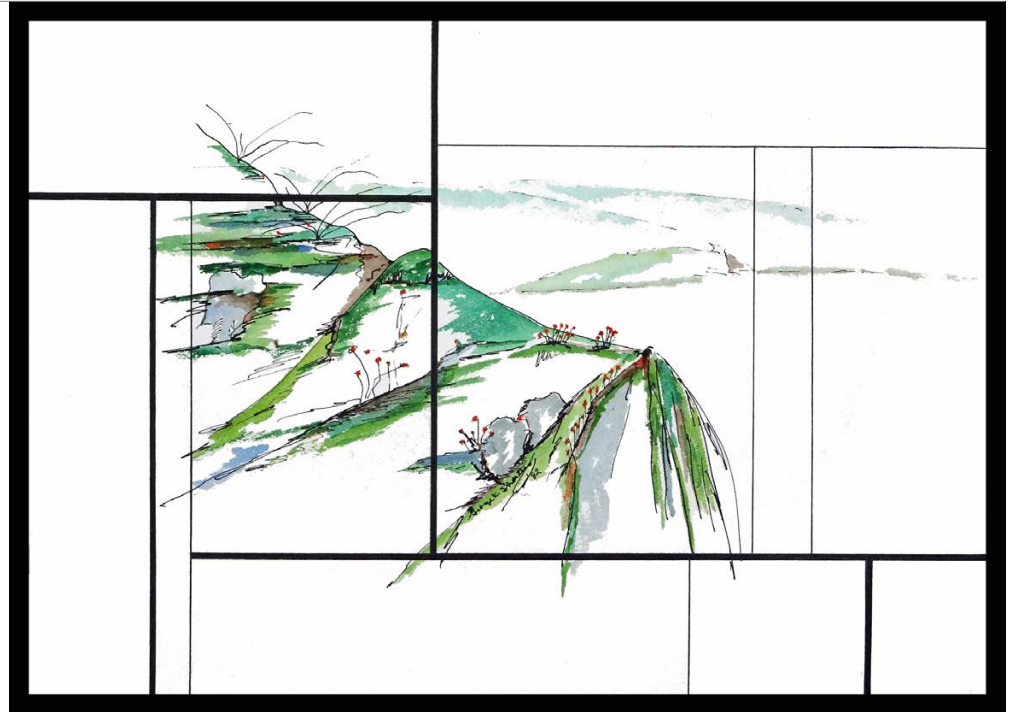
George K. Shortess has had two
 careers. One was in Cognitive
 Neuroscience with a Ph.D. from
 Brown University in experimental
 psychology, postdoctoral training
 in neurophysiology, research
 grant support from the National



Institutes of Health and full
 professor at Lehigh University.

His other career was as an
 internationally recognized visual
 artist. With a long list of exhibits
 to his credit, he is represented in
 a number of public collections
 and many private collections.

Shortess studied studio art at
 Boston Museum School, the
 University of Hawaii and the
 University of Rhode Island.
 Twice he was awarded artist



fellowships from the Pennsylvania
 Council on the Arts. Retired from
 teaching, he is an emeritus
 professor at Lehigh having had a
 joint appointment in the Art and
 the Psychology departments.
 Recently, the Museum of
 Modern Art in NYC acquired
 one of his earlier artist books.

HOME BASE: Bethlehem, Pa.

ARTIST COMMENTS: As an artist,
 I use a variety of media to create
 works which explore, in a social
 context, relationships among
 art, human experience, and our
 sense of reality. The basis of our
 experience lies in the activity of
 our nervous systems. This notion
 led me in the 1970s to produce
 work which I call "Neural Art."
 After some initial exploration,
 I decided to focus on three
 characteristics of the nervous
 system—network structure,

the organization of our percep-
 tual input, and interactivity.

Neural Hallway is a mini
 retrospective based on my
 Neural Art work. Hanging on the
 wall is a structure of narrow
 black bars inspired in part by
 Mondrian. Within the network
 are paintings in watercolor and
 ink of landscapes with overlay-
 ing grids to remind the viewer
 that there are structures—
 neural structures—between our
 inner selves and the outside
 reality shaping our perceptual
 experience. Interactivity comes
 into play as sounds are triggered
 by visitors moving in the hallway.

Shortess presents and discusses
 his work on the NAP TV series
 New Arts Alive—see page 10 for
 on-demand viewing details. Visit
lehigh.edu/~gkso/ to see his
 work and learn more about his
 ideas on "neural art."

photographer (American, b. New York City, 1953)

Luke Wynne



PHOTO: BARBARA DORIO

Luke Wynne began his photographic career in NYC, moving to Los Angeles in 1980 where he was an editorial, portrait and movie photographer. His portraits of Hollywood actors were syndicated worldwide by the Gamma Liaison Agency.

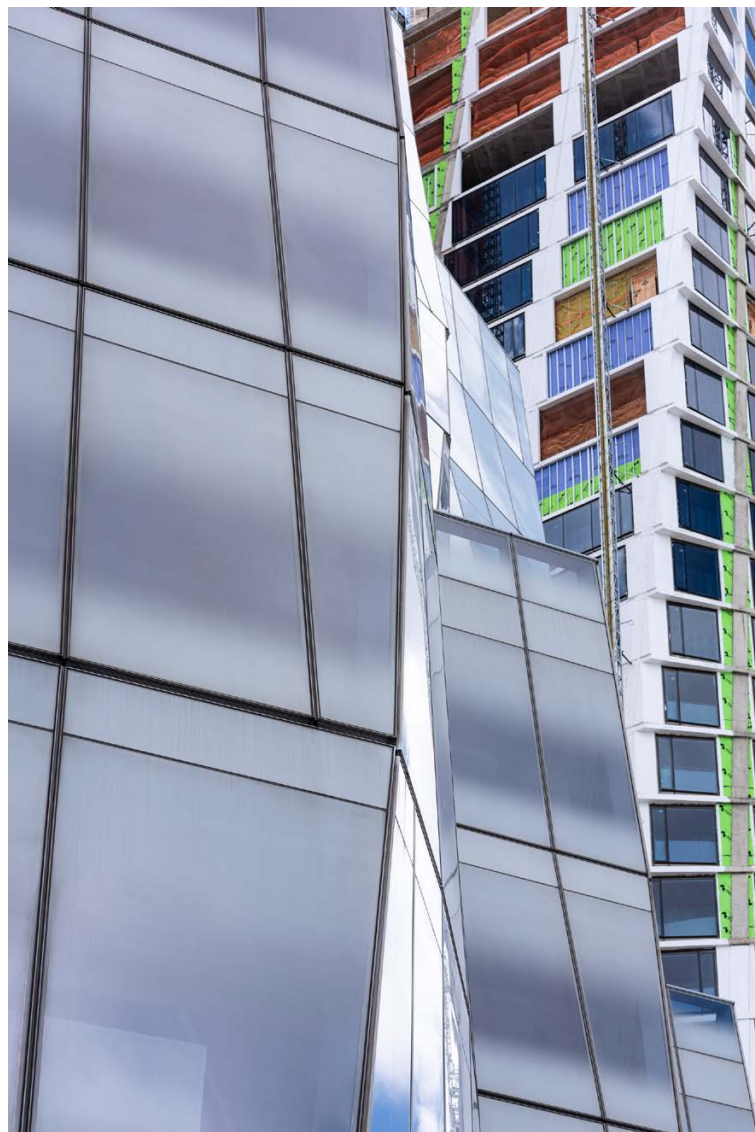
A resident of Easton, Pa., Wynne is currently an adjunct professor of Digital Photography at Moravian College, Bethlehem. He is one of four founding members of the photographic collective Frame 37 based in the Lehigh Valley.

While living in Italy from 1999 to 2010, Wynne taught master classes in portraiture and exhibited extensively in the Veneto region. Back in the U.S., in 2011 he received a National Endowment for the Arts award. In 2015 he debuted his book—and show—*Artists in Residence* at the Crayola Gallery in Bethlehem. In 2016 he curated and participated in the Allentown Art Museum exhibition, *Allentown X7: Photographic Explorations*.

Of the current NAP exhibition Wynne states, “I find these images of man-made monuments to be full of wonder. This body of work is a meditation. Each image is a meditation.”

Wynne presents and discusses his work on the NAP TV series *New Arts Alive*—see page 10 for on-demand viewing details. Also, visit lukewynne.com and frame37.org/lukewynne to view portfolios of his work.

“Throughout my photographic career I’ve believed in preparation. In the studio I run lighting tests and try different backgrounds. On location shoots I survey the area to be photographed and then plan how to light it and if there is a subject, where to place them. Prepare, observe and act. These are the rituals I employ. But there is an added ingredient for a successful shoot. That added something, is to forget everything. Be in the moment.”—LW



one-to-ones
Fri and Sat
Sep 13, 14, 2019

9-4:30 Individual hour-long
 conversational meetings
 by appt: 610-683-6440

exhibition
<STRUCTURE>
Fri Sep 13 through
Sun Oct 27

NAP Gallery, Kutztown
 gallery hours: FRI/SAT/SUN 11-3:00

reception Fri Sep 13

6-9:00 PM artist reception
 7:30 PM gallery talk by Wynne

Exhibition booklet available

Exhibition funding in part through the generosity of local businesses

visual artist (American, b. Pittsburgh, 1958)

Margery Amdur

"My work continues to speak as both painting and sculpture. Thousands of miniature geometric foam formations are saturated, embellished with inks, dyes, pastel pigment, the finest black glitter, and powdered graphite, then sealed, and adhered to canvas. ... Texture has become a primary language, influenced by dynamic other-worldly landscapes of Iceland and Australia."—MA

Sight Unseen #2, 2019, mixed media,
 site-specific installation



one-to-ones
Fri and Sat
Nov 1, 2, 2019

9-4:30 Individual hour-long
 conversational meetings
 by appt: 610-683-6440

exhibition
<Blind Site>
Fri Nov 1 through
Sun Dec 15

NAP Gallery, Kutztown
 gallery hours: FRI/SAT/SUN 11-3:00

reception Fri Nov 1

6-9:00 PM artist reception
 7:30 PM gallery talk with Amdur

closing day reception
Sun Dec 15

1-3:00 PM reception with Amdur
 in tandem with George
 Shortess Project Wall
 reception

Margery Amdur has created over 60 mixed-media site-specific, temporary and permanent art installations in the past 20 years. Last year included a solo exhibit at Augsburg University's Gage Gallery in Minneapolis and this September she is exhibiting an installation from the *Series Sight Unseen* at the International Istanbul Biennial. She is known for her innovative use of everyday materials as well as her unconventional studio practice often involving students or community members. Recently she has been translating her textured

pieces into amazingly detailed monoprints.

Major projects over the years include, in 2012, *Walking on Sunshine*—a permanent public art project in Septa's Spring Garden underground subway station, Philadelphia. In fall 2015 she created *My Nature*, a mixed-media, site-specific installation in Terminal B at Philadelphia International Airport as part of the Art in Airport Program. In 2016 the U.S. embassy selected her *Amass #16* to be installed at the U.S. ambassador's residence, in Riga,

Latvia, and *Amass #17* to be permanently installed in their new embassy headquarters in Paramaribo, Suriname in 2017. Her work was on the cover and featured in the fall 2014 issue of *Art Voices*.

Originally from Pittsburgh, Amdur received her BFA from Carnegie-Mellon University and her MFA from the University of Wisconsin in Madison.

Amdur presents and discusses her work on the NAP TV series *New Arts Alive*—see page 10 for on-demand viewing details. See more at margeryamdur.com.

2019-2020 season

ceramic sculptor, (American, b. Washington, DC, 1939)

Beverlee Lehr

Annual Juried Residency and Solo Exhibition



“When hand building with soft slabs, I want to maintain the feeling of the initial softness of the wet clay in the final form.... As I get older and more vulnerable, I seem to be yielding to the use of less durable materials like fabric and enjoying the contrast with the fired clay surface.”—BL



Remembering Cleo, 2018,
 stoneware, 40" x 28" x 4"

one-to-ones
Fri and Sat
Jan 17, 18, 2020

9-4:30 Individual hour-long
 conversational meetings
 by appt: 610-683-6440

exhibition
<Late Ceramic
Wall Work>
Fri Jan 17 through
Sun Mar 1

NAP Gallery, Kutztown
 gallery hours: FRI/SAT/SUN 11-3:00

reception Fri Jan 17

6-9:00 PM opening reception
 7:30 PM gallery talk with Lehr

Since 1992, award-winning ceramic sculptor **Beverlee Lehr** has exhibited her work in museum, college and art center shows primarily in south-central Pennsylvania. Her last solo was at the Suzanne H. Arnold Gallery at Lebanon Valley College in 2011. Her ceramic wall pieces are in many private and public collections including the State Museum of Pennsylvania in

Harrisburg and Lancaster Museum of Art.

Lehr is inspired by the shapes of the human body, the land and geometry. To obtain her unique colors, she formulates all her own clay and glazes and fires with propane in an atmosphere with reduced oxygen—a process known as reduction-firing.

Born in Washington, D.C., and raised in Silver Spring, Md., Lehr was nine when her father, a draftsman, died and her mother took work as a research technician for the Armed Forces Institute of Pathology. After earning a bachelor's degree in science at Trinity College in Washington, D.C., Lehr worked as a chemist at the National Heart Institute in Bethesda, Md. She married and became a stay-at-home mom, periodically taking art classes. After moving to south-central Pennsylvania, she continued art studies at Millersville University, earning a bachelor's degree, and studied clay with John Ground.

In 1973 Lehr began making functional pottery which she sold at craft shows. She studied ceramics with Robert Turner in 1998 at the Penland School of Crafts. By 1979 she was experimenting with sculptural forms and took workshops with ceramists Bill Daley and Lisbeth Stuart.

Lehr presents and discusses her work on the NAP TV series *New Arts Alive*—see page 10 for on-demand viewing details. Also see examples of Lehr's work at: beverleelehr ceramicsculpture.com. Don't miss the "Collection" areas where some of her finest pieces are shown.

Exhibition booklet available

visual artist (American, b. 1929)

Liz Whitney Quisgard

“My goal is to surprise and engage the mind by seducing the eye. Toward that end I rely on pattern. The term “decorative” has been applied to my work—most often in a negative sense. But, that’s okay with me, for some of the most important art is essentially decorative. Islamic rugs, Greek column capitals, Navajo textiles, Byzantine mosaics, Baroque architectural embellishments.”—LWQ



untitled, 2016, yarn on buckram,
 4' x 20' (partial view approx 7' x 4')

exhibition
<Fiber Works>
Fri Mar 13 through
Sun Apr 26, 2020

NAP Gallery, Kutztown
 gallery hours: FRI/SAT/SUN 11-3:00

reception Fri Mar 13
 6-9:00 PM

one-to-ones
 Not available during this residency

Inspired by Navajo textiles, Moorish architecture, Byzantine mosaics, and the Baroque, **Liz Whitney Quisgard** creates a *Thousand-and-One-Nights* vision though embroidered, abstract tapestries as well as columns. A painter for more than 60 years, she appreciates the patience that comes with working in fiber. The artist refers to her work in fiber as “pseudo-pointillism,” that combines the discipline of creating painstaking

patterns and heavily structured designs with bright jewel-like colors and abstract ideas.

More than world fame, her goal as an artist is to bring about the greater legitimization of ornamental art. “My work is totally decorative. It has no meaning beyond “What you see is what you get,” she explains. “And I’d like people to say that I made the term ‘decorative’ not only respectable but

admired ... The visual arts are exactly that, *visual*. No meanings, No preachments. No symbols.”

Quisgard has exhibited at the Chicago Art Institute, the Corcoran Gallery, and the Baltimore Museum of Art as well as numerous galleries and other museums nationwide.

Liz Whitney Quisgard is a nationally renowned and award-winning artist who resides in New York City. She has exhibited at numerous galleries and museums nationwide including Asheville Museum, NC; Austin Art Museum; Baltimore Museum of Art; Richmond Museum, Indiana; Chicago Art Institute; and Corcoran Gallery, Washington, DC.

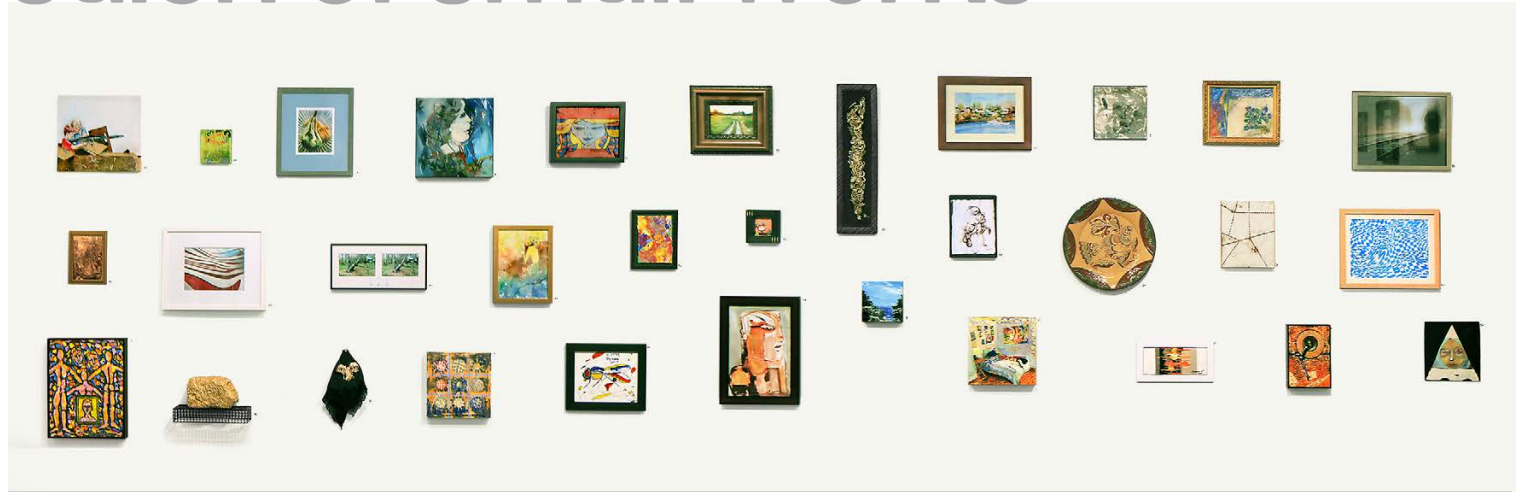
Immerse yourself in her work at lizquisgard.com

Exhibition booklet available

Exhibition funding in part through the generosity of local businesses

NAP 31st annual international invitational

salon of small works



above: NAP main gallery's west wall as seen during the 2019 edition of the annual salon.
 left: *Let's Talk*, a painting by Haitian artist Maxan Jean-Louis exhibited in the 2019 salon.
 right: *Lenoir*, a photographic print by Dan McCormack exhibited in the 2019 salon.

exhibition
Fri May 22 through
Sun Jul 12, 2020

NAP Gallery, Kutztown
 gallery hours: FRI/SAT/SUN 11-3:00

opening reception
Fri May 22

6-9:00 PM artists reception

closing day reception
Sun Jul 12

1-3:00 PM

Our salon is a regional gallery goers' favorite. Opening night is a blast—it's always packed and many of the artists are there. There is tremendous diversity of styles and media, including video. A total of 166 artists were represented at last

season's salon—113 from 15 states and 53 from 20 foreign countries. The number of incredible international entries makes this show that much more essential.

Each artist is represented by one recent work measuring up to 200 sq. inches. Most works are for sale, reasonably priced, and many already framed. It's nearly impossible to walk away without claiming at least one piece. Some visitors have made it an annual tradition to buy at least one piece.

Artists interested in exhibiting, see the **Call for Entries** page toward the end of this *Preview*.

Exhibition booklet available

9

Exhibition funding in part through the generosity of local businesses



**grab a bite or brew,
 get 10% off**

On your next NAP visit, why not grab a bite or brew at one of our supporting eateries. Show your NAP membership card; some offer 10% off to NAP members. *Supporting businesses are listed on page 18.*

call for entries

Any artist who has exhibited in NAP's Annual Salon since 2014 will be sent an invitation via email or post by 03/01/20 inviting them to participate again. All others must apply. Entry instructions are included on the "Call for Entries" page toward the end of this *Preview*.

Application deadline: April 1, 2020

nap on demand 101

Television program funding in part by the Pennsylvania Council on the Arts, Berks Community Television, local businesses, and individuals

New Arts Program produces two live one-hour TV programs every month that are televised to over 110,000 cable households in the Berks County area and streamed live over www.bctv.org. Over 450 NAP programs have been produced at Berks Community TV in Reading since our first airing in 1988.

new arts alive

Our flagship series, **New Arts Alive**, features a single guest—a painter, sculptor, writer, poet, critic, architect, choreographer, dancer, musician, composer, performance artist, curator, or gallery dealer—in conversation about their passion of how and why they do what they do. Just about every NAP residency artist is invited to do an episode to present and talk about their work. NAP director James Carroll or critic Ron Shira add commentary.

nap connection

In 1992, a second series was added, **NAP Connection**—Critic Ron Shira covers the regional arts scene. The program often includes live interviews with regional artists.

streaming live

James Carroll hosts “Alive” and **Ron Schira** is NAP Connection’s reporter and host. No matter who James or Ron has on board as a guest—or what their topic—the conversation is guaranteed to be thought provoking. Viewers can join the dialog by phone during the live BCTV telecasts. Dial in live at 610-378-0426. Shows are streamed live on the Web at www.bctv.org.

Available anywhere

Streamed live on www.bctv.org:
FIRST Wednesdays 6:00 PM
FOURTH Wednesdays 7:00 PM

In Berks County, tune in BCTV twice monthly for live broadcasts:

FIRST Wednesdays 6:00 PM
(Repeats that Fri 9:00 PM;
Sat 5:00 PM; Sun 8:00 AM)

FOURTH Wednesdays 7:00 PM
(Repeats that Fri 10:00 PM;
Sat 6:00 PM; Sun 9:00 AM)

BCTV availability:

- Comcast Reading/Hamburg Channel 13
- Comcast Oley Channel 4
- Service Electric Cablevision Channel 19 (Birdsboro, Fleetwood, Kutztown)

Berks Community Television is at:
1900 N. 13th St., Reading, PA 19604
610-374-3065

on demand anytime

Bctv.org has made accessing recent and past episodes of “New Arts Alive” and “NAP Connection” easy peasy. Follow these steps for either series. We show laptop screen shots, but adapting them to your phone should be no problem.

over 170 episodes

To watch any of 100+ previous episodes of “Alive” dating back to 2010, or the nearly 70 episodes of “Connection” dating back to 2008, follow the last couple steps at right.

follow this path:

bctv.org

Go to www.bctv.org



On the homepage, open MENU.



From the MENU topics, select “Arts & Culture.”



Programs

Hovering over the “Arts & Culture” box, select “Programs” icon to reach the Programs page.



Scroll down through the programs to “New Arts Alive” (or “NAP Connection”)

—On your computer/laptop, click “Read More.”

—On your phone/iPad, click the image.

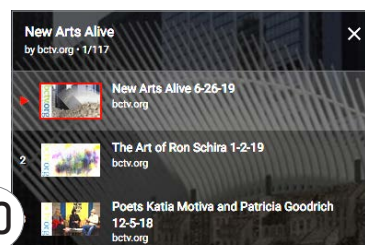


The most recent New Arts Alive episode appears, ready to watch and share. Enjoy.

To watch any of 100+ previous episodes dating back to 2010:



Click the Playlist icon located in the upper right-hand corner of the current video frame.



Select from a list of 100+ New Arts Alive episodes.

Follow all the same steps for NAP Connection and you’ll reach a playlist of nearly 70 episodes dating back to 2008.



from left: John Cage, Philip Glass, Mark Golden, Don Voisine, Jan-Ru Wan

10 years back

We're tripping back to the '09-'10 NAP season. Joining us then were:

John Cage musician/composer

Philip Glass
musician/composer

Mark Golden
artist materials consultant

Don Voisine painter

Jan-Ru Wan sculptor

Let's clear the air first by saying, **John Cage's** actual NAP residency here in Kutztown was not 10, rather 40 years ago—in 1980. Fast forward to the fall of 2009, NAP revisits that early residency with an extended exhibition of “string” prints that Cage had made at the time with the assistance of Kutztown University art students. During his 1980 residency Cage produced two unique monoprint editions of 20 and 62 prints each. These prints, some of his most dynamic works on paper, were subsequently sold to benefit New Arts Program.

Cage died in New York City on August 12, 1992. NAP's 2009 exhibition gave the public a rare opportunity to see many of these prints side-by-side for the final time. It was a great excursion into the possibilities of the monoprint process by a great artist.

Philip Glass is a dedicated advocate of the New Arts Program. On October 11, 2009, the pews were packed at St. John's UCC in Kutztown for his piano recital—Glass's eighth

benefit concert for the organization. Surprise guest, Zack Glass—Philip's son—changed things up a bit with a set of his own song compositions.

Philip Glass is the first composer to win a wide, multi-generational audience in the opera house, the concert hall, the dance world, in film, and in popular music—simultaneously. His initial filmic landscape with Godfrey Reggio and the Philip Glass Ensemble, *Koyaanisqatsi*, may be the most radical and influential mating of sound and vision since *Fantasia*.

Dig deep at philipglass.com.

Jan-Ru Wan, NAP's Annual Juried Exhibition/Residency recipient for 2010, is an artist-educator with a then-ripening reputation as a sculptor, particularly in the fiber-arts arena. In addition to this NAP gig, she had six other solo exhibitions going on around the country during the 2009-10 season. Wan, born in Taipei, worked as a fashion designer in Taiwan before entering the United States in 1990 to study and eventually reside. By 1996 she had earned her MFA at the University of Wisconsin in Milwaukee and in 2006 was recognized with their Graduate of the Last Decade award. For 20 years Wan has been reusing found objects in her sculpture/installation work—especially things that have been discarded from industrial factories. Catch up with this fascinating artist at janruwan.com.

At the time of his 2010 residency, **Don Voisine's** geometric oil paintings on wood panels and similarly on small chunks of Styrofoam board were receiving critical attention in numerous publications including the *New York Times*, *Chicago Tribune*, *Village Voice*, *Brooklyn Rail*, *Kunstforum* and *Artnet* magazine.

For his NAP residency we were treated to three separate installations of Voisine's mid-career work—at the NAP gallery and at the galleries of Northampton Community College and Reading Area Community College. Xs never looked so good.

A New York City resident since 1976, Voisine lives and works in Brooklyn. Since 2007 McKenzie Fine Art gallery in New York has represented Voisine with half a dozen solo shows. He continues a busy national and international exhibition schedule.

A collection of his work going back to the NAP shows can still be seen at mckenziefineart.com. Find him under “artists.” If you like his work, this site will blow you away with selections from exhibitions dating from 2010 back to 2007.

This spring (2010), artist materials guru **Mark Golden** held the third in a series of artist workshops for NAP. Titled “On Being Archival,” this workshop helped participants understand how to determine what changes are acceptable to their works as they age and

how to adjust their paintings to be able to maintain as much of their original intent as possible—an invaluable takeaway for many attending.

Mark Golden is CEO and co-founded Golden Artist Colors in 1980. As one of this country's leading experts in the acrylic industry, for decades he has been working directly with some of the world's most talented artists. GAC's custom lab is the only facility of its kind dedicated to designing products to the specifications of individual artists. He has been awarded special recognition by American Institute for Conservation of Historic and Artistic Works.

Mark Golden has one of the most engaging and informative blogs on the Internet for painters: <https://education.goldenpaints.com/blog/>. On the rest of the Golden site, painters—whether using oils or acrylics—can find expert answers to questions about materials and techniques. Don't miss their “Just Paint” newsletter archive.

As has been the case since 1996, booklets profiling each of the residency artists were made available which included background information, images and an interview. If you are in the gallery, ask, or drop us a note and a check for \$__ and we'll send you a pack of the three booklets produced for the 2009-2010 season—Cage, Wan and Voisine. Supply is limited.

call for entries

visual artists

NAP 31st annual international invitational salon of small works

WHAT: The climax of the NAP season, this exhibition of 150-200 works has always been well-attended. Artists are invited to submit one recent original work, measuring up to 200 sq. in. Sale of work is encouraged (15% commission).

EXHIBIT DATE: May 22-July 12, 2020

LOCATION: 173 W. Main Street, Kutztown, Pa.

EXHIBITOR FEE: \$5 (no fee to apply)

APPLICATION AND ACCEPTANCE DEADLINE:

In our hands by April 1, 2020

TO BE CONSIDERED: Any artist who has exhibited in an NAP Salon since 2015 need not reapply and will automatically be sent an entry form via email or post by 03/01/20. All others must apply.

TO APPLY: Submit the following:

- Complete contact information including email address
- Artist statement (not resumé): Explain the thinking behind the work and describe what the work process is about—One page typed.
- 10 images of your work (hi-res JPEGs on DVD, non-returnable). File names should include numbering (1-10). Provide film/video works on DVD. Examples should demonstrate a dedication to the continuance of a body of work.
- List of works identified 1-10 corresponding to above—include title, date, medium, dimensions: H×W (×D)

RESTRICTIONS FOR INVITED ARTISTS:

- One work per artist
- Work completed within the past two years

- Size limit: 200 square inches, including frame
- Work must hang on a wall (except film/video)
- Video and film entries must be on DVD, 14 minutes or less, including credits (screening accommodations provided)
- Artist pays postage/freight costs, both ways
- Work must be delivered and removed in person or by carrier on dates to be specified

SUBMIT TO:

NAP Exhibitions, P.O. Box 0082
Kutztown PA 19530-0082

MORE INFO: 610-683-6440
napconn@gmail.com

visual artists

NAP residency and solo exhibition juried competition

WHAT: Artists worldwide are invited to compete for a residency/solo exhibition at the New Arts Program Gallery. One artist is chosen to receive the following:

- Two-day NAP residency with up to 12 one-to-one conversations with public
- Six-week exhibition
- Opening artist reception
- Gallery talk by artist on reception night
- Press releases
- Write-up/photos in NAP press
- One-hour appearance on *New Arts Alive* cable TV program broadcast live from Reading, Pa., available worldwide on demand
- Exhibition booklet with visuals
- \$550 honorarium plus lodging
- Insurance coverage of exhibited work

EXHIBIT/RESIDENCY DATE: Jan. 2021

LOCATION: 173 W. Main Street, Kutztown, Pa.

APPLICATION FEE: \$30—Waived for current NAP members (Payable in U.S. dollars by money order or check through a U.S. bank.)

ENTRY DEADLINE: In our hands by October 20, 2019. Decision notification in December 2019.

TO ENTER: Send fee and all of the following:

- Cover letter: Include complete contact information incl. email address—One page typed.
- Artist statement (not resumé): Explain the thinking behind the work and describe what the work process is about—One page typed.
- 10 images of your work (hi-res JPEGs on DVD; non-returnable). File names should include numbering (1-10). DVD, for film/video works. Examples should demonstrate a dedication to the continuance of a body of work.
- List of works identified 1-10 corresponding to above—include title, date, medium, dimensions: H×W (×D)
- SASE for return of materials
- Do not send additional items

SUBMIT TO:

NAP Exhibitions, P.O. Box 0082
Kutztown PA 19530-0082

MORE INFO: 610-683-6440
napconn@gmail.com

visual artists the project wall— installation invitation

WHAT: The Project Wall is unlike a regular exhibition, but rather is a working space in flux. An invited artist is given a blank area 8 feet high by 14 feet on the NAP gallery foyer wall on which to present or create an evolving body of work that is given a 12-week duration in which to reach its culmination. Up to three Wall Projects are presented annually. Each artist is responsible for the following:

1. *Wall installation*—The artist presents or creates an

evolving body of work over a 12-week duration ending with an artist reception on closing day.

2. *TV conversation with artist*—The artist participates in NAP's interview program broadcast live and available worldwide on demand. The program takes place during the same month their Project Wall begins.

3. *Project documentation*—Artist is required to photograph all significant project changes or occurrences during the 12 weeks. These images are included in an artist booklet documenting the project.

EXHIBIT DATES: Up to three 12-week projects annually, beginning in September, January and April.

LOCATION: 173 W. Main Street, Kutztown, Pa.

APPLICATION FEE: None.

ENTRY DEADLINE: None. The artist selection process is ongoing.

TO APPLY: Interested artists should chat with James Carroll (610-683-6440) prior to making their submission. Then, submit the following on a USB stick or DVD. Include hard copies:

- One-page essay (approximately 350 typed words) describing how you intend to develop the Project Wall. It may be helpful to write in the third person to emphasize how the *work* would be speaking as opposed to writing about oneself.
- 10 images of your most pertinent work of the past 3-4 years with emphasis on current work (hi-res JPEGs on DVD, non-returnable). File names should include numbering (1-10).
- List of works identified 1-10 corresponding to above—include title, date, medium, dimensions: H×W (×D)
- Headshot photo of yourself (hi-res JPEG on same DVD)

SUBMIT TO:

NAP Exhibitions, P.O. Box 0082
Kutztown PA 19530-0082

MORE INFO: 610-683-6440
napconn@gmail.com

once a year pledge thirty to NAP



New Arts Program cannot survive on funds from only the PA Council on the Arts, foundations and businesses. NAP needs your support. Individual support is crucial to keeping small and unique organizations like the NAP afloat. By becoming a New Arts Program annual supporting member, you help make the following opportunities available *free to the public*:

- Conversational one-to-one consultations with residency artists
- Exhibitions and exhibition booklets
- In-house use of professional art reference library
- NAP television programming • This events calendar

Additionally, supporting members receive:

- Free admission to performances (excludes benefit concerts)
- Discount on prints and artwork (some exceptions)
- Art reference library exclusive borrowing privileges
- Satisfaction of keeping the New Arts Program vital

NAP is a unique nonprofit art resource organization dedicated to providing a forum for the public to interact one-to-one with today's most provocative and insightful artists from the literary, visual and performing arts.



supporting
member
application



- Check one: \$30.—**INDIVIDUAL** one year (365 days)
 \$50.—**FAMILY** one year (adult couple & their children)
 This is a renewal (No lapse. Extends effective expiration date by 365 days.)

I am pleased to include an additional tax-deductible gift to support NAP's goals:

- \$200 \$150 \$100 \$ _____
 I wish this gift to be used exclusively for the NAP Endowment Fund.
 I wish to remain anonymous.

TODAY'S DATE (MONTH/DAY/YEAR) ____ / ____ / ____

NAME(S) _____

OCCUPATION/DISCIPLINE _____

ADDRESS _____

CITY/STATE/ZIP _____

EMAIL _____

PHONE (_____) _____

Mail with check to: New Arts Program, POB 0082, Kutztown PA 19530-0082

fine art finds

signed limited edition prints from NAP collection for sale

The last our of John Cage prints is sold, but New Arts holds many other museum-quality art works that are intended for sale. Like the Cage prints, most are from the **NAP Limited Print Editions** collection which consists of over 60 editions by cutting-edge visual and performing artists created between 1979 and 2007, including an edition by famed choreographer Bill T. Jones.

These works by composers, architects, choreographers, sculptors, painters and critics were created during residencies at New Arts Program. Many were individually hand painted or otherwise altered by the artists and are remarkable for their ingenuity and idiosyncratic use of the medium. The small print runs of etchings, lithos, monotypes, and silk-screen prints number somewhere from two to 25 per signed edition.

We often have available for sale other fine works that are periodically donated to the Program. Private collector, corporate, gallery, and museum inquiries are welcome. Call or email us and we'll fax or email you a complete list of works. Discount pricing is available to NAP members. Sales benefit NAP. Please call for an appointment (610-683-6440). You won't leave empty-handed!

Signed prints or other works by the following artists are for sale:

Roberta Allen, sculptor
Robert Ashley, musician/composer
Connie Beckley, sculptor
Johanna Boyce, choreographer/dancer
Glenn Branca, musician/composer
John Cage, composer [sold out]
Ping Chong, multimedia
Efrain deJesus, painter
Tullio Desantis, artist
Peter Eisenman, architect

Molissa Fenley, choreographer/dancer
Ellen Fisher, performance artist
Jon Gibson, musician/composer
Jeremy Gilbert-Rolfe, painter/critic
Malcolm Goldstein, musician/composer
Peter Gordon, musician/composer
Edgar Grana, musician/composer
Denise Green, painter
Marcia Hafif, painter
Keith Haring, painter
Bill T. Jones, choreographer/dancer
Ralph Lemon, choreographer/dancer
Frank Lima, poet
Alvin Lucier, musician/composer
Joseph Masheck, art historian/critic
Steven Paul Miller, poet
Michael Morin, printmaker
David Moss, musician/composer
Steve Poleskie, artist
Lucio Pozzi, sculptor
David Shapiro, poet/critic
Irene Stein, artist
Barbara Strawser, painter
Valentine Tatransky, art historian/critic
Valery Taylor, sculptor
Julius Tobias, sculptor
Bernard Tschumi, architect
Maryann Unger, sculptor
Peter Van Riper, musician/composer
Ursula Von Rydingsvard, sculptor
Lawrence Weiner, painter
Arnie Zane, photographer/dancer/
choreographer

collectible posters

Along with our limited-edition print collection, the Program currently offers some attractively priced collectible posters, including two **Keith Haring** editions and one by **Robert Stanley**. We're fond of Stanley's striking 1985 edition, available signed and unsigned. It's a big one—looks great in any office setting. *See it small on page 16.*

View and purchase posters in person at the NAP Gallery. Or mail order from the **NAP Store**, *See page 15.*



John Yau/Max Gimblett, *Leaves from a Chinese Album*, 2003, handmade paper, copper, 21" DIAMETER X 1" DEEP, edition of 12 albums. Each one includes 15 leaves. Pictured, six of 15 leaves with their copper canister in a gallery setting.

books out of bounds

Live on Paper: Book Forms— Since 1995, NAP and White Crow Paper Mill have collaborated to invite internationally recognized artists in the literary, visual and performing arts to create limited editions which stretch the boundaries of book form. These unique exhibition pieces, limited to editions of 10 to 12, can be purchased at NAP.

Collaborating with papermaking professionals at White Crow's rural facility in Fleetwood, Pa., each artist controlled all aspects of their book's production.

White Crow was established in 1980 by papermakers/printers Doug and Helene Zucco in order to provide quality pulp for their own expressive use as artists.

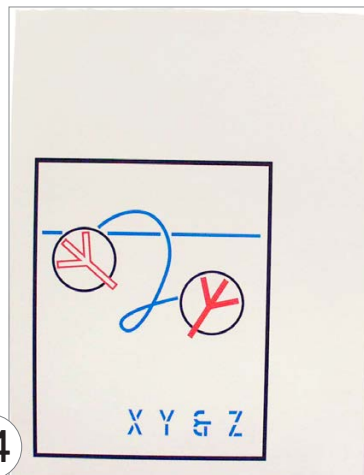
Book forms by these artists are for sale:

Clytie Alexander, painter
Molissa Fenley, choreographer/dancer
AP Gorney, visual artist
Dan Hurlin, performance artist
John Jesurun, performance artist
Ralph Lemon, choreographer/dancer
Dan Welden, painter/printmaker
Michael Winkler, painter
John Yau, poet, with Max Gimblett, visual artist

Weiner untitled

A year before the Whitney Museum of American Art mounted his 40-year retrospective in 2008, **Lawrence Weiner** created this exquisite work (*left*) to benefit New Arts Program. Measuring 15" x 12", it was offset printed in three colors by **Hawk Mountain Printing**, Leesport, Pa., in an edition of 40. \$1,600 each.

Lawrence Weiner, untitled, 2007, archival Epson print on handmade cotton paper, 15" x 12"



We reserve the right to limit quantities. All items also available for purchase in person at the NAP gallery.

“Crating, Packing and Shipping Art” DVD—our top seller

The most thorough, professional, reliable documentation of its kind—a must for any artist or curator.

CRATING, PACKING AND SHIPPING details various crate types and includes an invaluable segment on “markings for shipping.” Produced by the New Arts Program and directed by David O’Connell of OCS Packing & Crating, the DVD is packed with trade secrets you can’t find anywhere else. Printed transcript included. 80-minutes.

DVD \$30. ITEM #1011

VHS \$20. CLOSEOUT ITEM #1012

Kent Floeter monograph

BUILDING FLATNESS, THE ART OF KENT FLOETER—Painter Kent Floeter (1900-2004) oversaw the creation of this monograph that, in both beauty and craft, is a benchmark of book publishing. Text contributions by Chuck Close and Raymond Ryan. Published in 2003 by Stephen David Editions Ltd, NY. 12.5”w x 11”h x 1,” 208 pages with 139 full-page color reproductions. (Was \$125 used on Amazon® now unavailable.)

HARDCOVER (NEW) \$65. ITEM #1016

+ \$10. S&H U.S. only

Robert Stanley signed poster

We love this 1985 edition, available signed and unsigned. This is a big one by an important twentieth-century American artist, striking in any office setting. *See it on page 16.*

STANLEY 1985 POSTER (41" H X 26") SIGNED \$600. ITEM #1044

STANLEY 1985 POSTER (41" H X 26") UNSIGNED \$20. ITEM #1045

+ \$20. S&H U.S. only, one or more

Out of print

Our inventory of these NAP publications is dwindling—when they’re gone, they’re gone.

DANCE ON PAPER—Color catalog for 2001 exhibition held at Lehigh University. Visual works by over 50 choreographers. 53 pages.

SOFTCOVER \$9. ITEM #1035

IN AND OUT OF KUTZTOWN, 1974-1981

—An image-filled documentary of the first seven years of the New Arts Program. Over two inches thick!

A keeper. 426 pages.

SOFTCOVER \$30. ITEM #1033

+ \$10. S&H U.S. only

IN AND OUT OF NEW YORK—Catalog for 1980 NAP exhibit held at White Column in NYC with works by former Kutztown University students who lived and worked in NYC. 40 pages.

SOFTCOVER \$4. ITEM #1034

PRINTS OF NON-PRINTMAKERS

—Catalog for 1988 exhibition held at Lehigh University—works by musicians, choreographers, and architects created through NAP Editions. 22 pages.

SOFTCOVER \$4. ITEM #1036

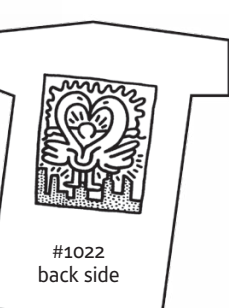
JULIUS TOBIAS: WORK FROM 1965 TO 1992

—Exhibition catalog. 48 pages.

SOFTCOVER \$4. ITEM #1037

N.A.P.TEXT(s)—Literary journal loaded with stimulating writing, poetry, and visuals by literary, visual, and performing artists. #1-3 are exquisite 16-page booklets; #4-6 are in a stylin’ folded poster format. (#7 sold out)

PER ISSUE \$3. ITEM #1031



#1022 back side

Keith Haring appearances 2-disc DVD set

KEITH HARING DVD—In 4 segments. Part 1: Kutztown native Haring in 1982 working on five drawings (30 min). Part 2: Haring animation originally shown in Times Square. (29 sec). Part 3: His 9/10/87 opening at NAP Space. Keith spent nearly five hours hanging with the crowd of 750 (10 min). Part 4: A 1982 public presentation by Haring (45 min). Printed transcript included. 86-minutes total.

DVD (2-DISC) SET \$33. ITEM #1013

VHS \$15. CLOSEOUT ITEM #1014

© K. Hamin

Haring posters sellout alert

In 1989 Keith Haring created a graphic for a concert poster screen printed the next year. A few of these first-run beauties remain—flea market priced... ditto the oversized 1984 “Kutztown Connection” benefit poster with Keith’s iconic heart graphic. Check them out on page 17 or in person at the NAP Gallery.

1990 HARING SILKSCREENED POSTER (22" H X 17") \$15. ITEM #1042

1984 HARING OFFSET POSTER (33" H X 20") \$20. ITEM #1043

+ \$20. S&H U.S. only; one or more



Glass, Gibson, Ashley, Reich, 6 others on music CD

CD CONNECTION is an exclusive NAP compilation of instrumental and vocal works by some of new music’s most influential composers. Each work was personally selected by its composer for this disc. Features the first ten musician/composers who had residencies at the New Arts Program: Philip Glass, Steve Reich, Jon Gibson, Meredith Monk, Robert Ashley, Malcolm Goldstein, Joan La Barbara, Connie Beckley, Peter Van Riper and Glenn Branca. Released 1996.

LIMITED-EDITION CD \$20. ITEM #1015

NAP gift certificates

For the artist or art lover in your life. Gift certificates can be applied to membership, artworks, NAP Thrift Shop items, and NAP Store items. **\$25. (no S&H fee) ITEM #1050**

NAP store orders

ITEM #	ITEM NAME OR HELPFUL DESCRIPTION	SIZE/COLOR	QTY	COST PER ITEM	TOTAL
_____	_____	_____	_____	\$ _____	\$ _____
_____	_____	_____	_____	\$ _____	\$ _____
_____	_____	_____	_____	\$ _____	\$ _____
_____	_____	_____	_____	\$ _____	\$ _____
_____	_____	_____	_____	\$ _____	\$ _____
_____	_____	_____	_____	\$ _____	\$ _____
_____	_____	_____	_____	\$ _____	\$ _____

MERCHANDISE TOTAL \$ _____

SHIPPING AND HANDLING: Unless item is marked, apply the following fees:

1 item \$3. | 2-3 items \$4.50 | 4 or more items \$6. \$ _____

Shipping is U.S. only. Out-of-country ordering, please call 610-683-6440.

TOTAL AMOUNT DUE (add merchandise + shipping) \$ _____

Make check payable to: *New Arts Program*

NAME _____

ADDRESS _____

CITY/STATE/ZIP _____

PHONE (_____) _____ EMAIL _____



#1021 back side



#1023 back side

Always in style

Choose from two classic Keith Haring designs or Lawrence Weiner’s “Bridge” graphic silk-screened on back. All shirts, NAP logo on the front. Heavyweight 100% pre-shrunk cotton. Specify white or black for Keith Ts.

Specify S, M, L, XL, XXL

BRIDGE (WHITE) \$20. ITEM #1021

KEITH HEART \$20. ITEM #1022

KEITH SCARECROW \$20. ITEM #1023

FEATURED ITEM

Robert Stanley signed poster

We love this 1985 edition, available signed and unsigned. This is a big one by an important twentieth-century American artist, striking in any office setting.

STANLEY 1985 POSTER (41" H X 26")
SIGNED \$600. ITEM #1044

STANLEY 1985 POSTER (41" H X 26")
UNSIGNED \$20. ITEM #1045

+ \$20. S&H U.S. only, one or more
Order form on page 15.

ABOUT THE ARTIST

Like the rock stars, racecar drivers and fleshy women in his paintings, **Robert Stanley** (American, 1932-1997) was an icon of the '60s, '70s and '80s. For the last 15 years of his life he concentrated on painting sublime works based on his own studio photo shoots of female models that many consider to be his best work. Throughout his career his preferred subjects, including rock stars, sporting events and pornography, always seemed to grate against the pretenses of high art.

Labeled a pop artist, Stanley gained instant recognition for his stylized, hard-to-decipher erotic images first shown in 1965 and was on his way to becoming regarded as an important interpreter of contemporary culture.

In 1973 the Whitney Museum of American Art chose Stanley as one of the inaugural artists in its first Biennial Exhibition of Contemporary Art. His work is represented in many public collections, including the Museum of Modern Art, the Metropolitan Museum of Art and the Whitney.

Stanley was a NAP residency artist twice—in 1983 and again in 1987. Years later, in 2000, NAP recognized him with dual retrospectives—his early work at Northampton Community College in Bethlehem and his later work at the NAP Kutztown gallery.

KUTZTOWN



THE NEW ARTS PROGRAM

Literary, Visual, and Performing Arts

James F. L. Carroll, Director

Rob Stanley 85

nap thrift shop

new and used artist materials and other finds for sale—shop Sep-July

NAP Space, Kutztown

During gallery hours

FRI/SAT/SUN 11-3:00

No mail orders

Prices good through 7/12/2020

Artists looking for good deals on artist materials and equipment can strike gold at the NAP Thrift Shop. An array of items is available and the list is constantly changing. Opening inventory is noted here. Profits benefit New Arts Program.

Items wanted for resale

Do you have books, art supplies, materials, cameras, nice frames, or working electronics lying

around or in storage? Drop off items anytime during gallery hours or call 610-683-6440 to arrange for pickup. Donations are tax-deductible.

First run classic and late Haring concert posters

We're letting the last of our Keith Haring concert posters go at thrift shop prices, so we thought why not include them in our thrift shop. There are two posters—1990 "Benefit Concert" (the black silk-screened one at right) and 1984 "The Kutztown Connection" pictured below. Signed '84s sold out at \$600, but you can still get the identical first-run poster, minus the hand sig, for \$20. Haring's dated sigs are reproduced in the graphics of both posters anyway. You might try striking a deal buying both.

Gold leaf metal frame with glass, 8 $\frac{1}{2}$ x 13" with 2 $\frac{1}{4}$ " matt—\$20.00

Arches Aquarelle natural white, 400 lb rough, 22 x 30" [retail \$20.00]—\$14.00 ea
five or more sheets [only 23 left]—\$11.00 ea

Arches Cover, buff, 22 x 30"—\$1.00 sheet [only 8 left]

Cotton canvas, 9 oz: 72" wide—\$5.00/yd

Jerry's cotton duck, 15 oz double weave: 96" wide—\$13.00/yd

Utrecht cotton duck, 15 oz: 76" wide—\$9.00/yd

Utrecht cotton duck, 15 oz: 60" wide—\$7.00/yd

Cotton canvas, 15 oz double weave: 76" wide [retail \$19.00/yd]—\$9.00/yd

Cotton canvas, 15 oz double weave: 60" wide [retail \$15.00/yd]—\$8.00/yd

SoHo #133 linen, 15.17 oz: 82.67" wide—\$24.00/yd

SoHo #38 linen, 14.1 oz: 66.9" wide—\$15.00/yd

SoHo #42 linen, 12.7 oz: 66.9" wide—\$10.00/yd

Stretched cotton canvas, $\frac{5}{8}$ " profile, stapled on back [10 packs available each size; 2 to a pack] 18 x 24"—\$5.00 pack; 16 x 20"—\$4.00 pack; 12 x 16"—\$3.00 pack; 9 x 12"—\$2.00 pack

Pan pastels—over 50% off retail

New Radius toothbrushes [retail \$10]—\$5.00 ea

Air gun and cup, never used [retail \$150]—\$75.00

Edit suite: Videonics-A/B-1 roll edit controller, never used [retail \$200]—\$40.00

Kodak slide trays—\$1.00 ea [15]

Golden Artist Colors "Just Paint" publications—free

1990 Keith Haring silkscreened poster "Benefit Concert" [22" h x 17"]—\$15.00

1984 Keith Haring offset poster "The Kutztown Connection" [33" h x 20"]—\$20.00

VHS closeout—Keith Haring Appearances [see The NAP Store for info]—\$15.00

BENEFIT CONCERT



**FRED FRITH
JON GIBSON
MALCOLM GOLDSTEIN
LENNY PICKETT
JOHN ZORN and a Special Guest**



ST. JOHN'S UCC
WHITEOAK AND WALNUT
STREET
KUTZTOWN, PA

THURSDAY, 26 APRIL 1990, 8 PM

Tickets are available for \$20 or a Program Membership at the door or at the
NEW ARTS PROGRAM 173 W Main Street, Kutztown PA, 215-683-6440.

← 22" x 17"

↓ 33" x 20"



THE KUTZTOWN CONNECTION

The Symphony Space
Broadway at 95th St.
New York, New York

Friday
September 28, 1984
8:00 pm

Saturday
September 29, 1984
2:00 pm

Saturday
September 29, 1984
8:00 pm

Performances to Benefit the New Arts Program of Kutztown, Pennsylvania
James F. L. Carroll,
Director

**Robert Ashley
Connie Beckley
David Gordon
Bill T. Jones
Richard Landry
Peter Van Ripper
David Shapiro
Arnie Zane**

**Johanna Boyce
John Cage
Constance DeJong
Ellen Fisher
Jon Gibson
Alvin Lucier
Steven Paul Miller
David Moss**

**Peter Gordon
Edgar Grana
Joan Jonas
Frank Lima
Meredith Monk
Lucio Pozzi
Steve Reich
Marta Renzi
and Dancers**

General Admission
Tickets:
\$10 each performance

Advance Purchase
Discount:
\$15 any 2 performances
\$20 all 3 performances

Tickets available,
after Sept. 1, 1984,
From: The Symphony
Space Box Office

Broadway at 95th St.
New York, NY 10025
(212) 864-5400



The New Arts Program would not be in operation without the generous support of its sponsors and supporting members.

sustaining sponsors



Estate of Janet Goloub

Foundation for Contemporary Performance, NYC

Greenwich Collection Ltd.

Long, Barrell & Co. Ltd.

Certified Public Accountants
1150 Berkshire Blvd, Suite 240
Reading, Pa. 610-779-6000

Meet the Composer, NYC

Funding for Meet the Composer Inc. is provided with the support of the Pennsylvania Council on the Arts, ASCAP, the Virgil Thompson Foundation, and the National Endowment for the Arts

Phaedrus Foundation, NYC

St. John's United Church of Christ N. Whiteoak and W. Walnut Sts. Kutztown, Pa.

Sorrelli Jewelry

220 W. Main St, Kutztown, Pa.
610-894-9857

White Crow Paper Mill

Custom Papermakers
Fleetwood, Pa. 610-944-9061



This project was supported by the Pennsylvania Council on the Arts, a state agency, through its regional arts funding partnership, Pennsylvania Partners in the Arts (PPA). State government funding for the arts depends upon annual appropriation by the Commonwealth of Pennsylvania and support from the National Endowment for the Arts, a federal agency. PPA is administered in this region by the Berks Art Council.

business sponsors

Please patronize these local businesses who help fund NAP exhibitions and performances. Some offer discounts to our members.

Adam n' Eve Boutique

309 W. Main Street, Kutztown
Tu-F 10:00-6:00, Sa 10:00-5:00
610-683-8117

Audiology and Hearing Aid Service

114 S. Laural Street, Kutztown
Virginia Grim 610-683-6108

Berkleigh Eye Care

Marlon G. Burt, O.D.
93 Constitution Blvd., Kutztown
610-683-3888

Betty's

bettyswraps.com
129 W. Main Street, Kutztown
610-621-2642
Wraps, smoothies, salads, soups

Cagefreedesign.com

Fine art, digital restoration,
photography
Emily Branch 610-413-9565

Campus Inn

Old Route 222, Kutztown
610-683-8721

Colorfin LLC

PanPastel.com | SofftArt.com
Headquarters in Kutztown
484-646-9900
Makers of PanPastel™ ultra-soft
painting pastels and Sofft™ Tools,
fine art and craft tools

East Penn Manufacturing

Lyon Station 19536-0147

First National Bank in Fleetwood

Main & Franklin Sts, Fleetwood
610-944-7676

Global Libations

546 Noble St., Kutztown
484-646-9683
Roasting the finest fair-trade/
organic coffee daily
10% off order with NAP mem. card

Cheryl A. Haughney Realtor®

LV and Berks residential specialist
for Berkshire Hathaway/
Fox & Roach, Realtors®
484-225-9437

Main Street Inn

Boutique Hotel
401 W. Main Street, Kutztown
610-683-0401

Mark's Sandwich Shop

123 W. Main Street, Kutztown
7 days a week / 10:00-10:00
610-683-3626
A Kutztown tradition since 1966

Mr. Food Convenience Store

342 W. Main Street, Kutztown
7 days a week / 6:30 am-11:00 pm
610-683-7315

Pretty Dirty Ladies Inc.

prettydirtyladies.com
Toll-free 1-877-944-2211
Garden design and maintenance

Radius

radiustoothbrush.com
1-800 626-6223

SOS Business Machines Inc.

28 S. Center Avenue, Leesport
M-F 9:30-5:00
610-926-1299
Canon copier/fax sales,
service, supplies

Silver Maple Veterinary Clinic

silvermaplevet.com
Route 222, Kutztown
610-683-7988
Dogs, cats, ferrets, horses

Uptown Espresso Bar

466 W. Main Street, Kutztown
M-F 7:00 am-9:00 pm
Sa 8:00 am-7:00 pm
610-683-6401
10% off order with NAP mem. card

If you are a local business that wants to be recognized as an NAP supporter, call now to be included here.

—610-683-6440—



"New Arts is a nonacademic approach to a nonacademic subject, and it works!"
—Philip Glass