

nap preview

about

New Arts Program Inc. is a public tax-exempt, not-for-profit corporation organized under the laws of the Commonwealth of Pennsylvania and section 501 (c)(3) of the Internal Revenue Code. All donations to the Program are tax-deductible to the extent allowed by law.

welcome

This is our events calendar for the 2021-2022 season. Enjoy the read and see you soon.

One-to-Ones and exhibitions are free. Most other events are free too. For inquiries and up-to-the-minute schedule information call 610-683-6440.

Have you seen either of our two TV series, **New Arts Alive** or **NAP Connection**? You'll become addicted once you do. See page 8 for steps to find them on demand.

Occasionally we may have some urgent news or a special event that is announced via email. So next time you write or call, give us your email address—or just drop us an email with “ADD ME” in the subject line to napconn@gmail.com. Include your full name in the body of your email.

Founded in 1974, New Arts Program is a 501(c)(3) nonprofit educational art resource library, museum, and exhibition space dedicated to providing a forum for the local public to interact with working artists from the literary, visual, and performing arts.

During its 47-year history, New Arts Program (called the “Art Series Program” for its initial eight years) has brought over 700 cutting-edge visual, performing, and literary artists and critics from around the world to the doorsteps of the Lehigh Valley, Berks County and Philadelphia.

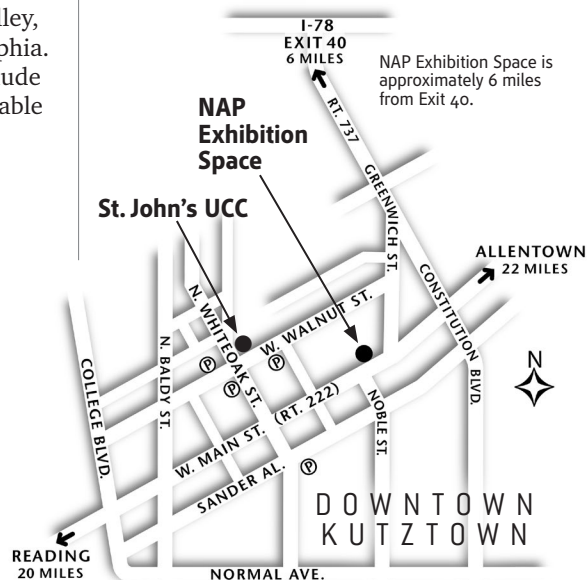
Additional programs include internships, two monthly cable television programs, an art research and slide library,

—more, page 2

chances are you've been missing out

One-to-One conversations are at the heart of the New Arts Program. During each residency there are a limited number of hour-long time slots available for private conversations with the visiting artist. One-to-Ones are **free** but **reservations are required**. You determine the direction of your meeting—a walk, a chat over coffee, a presentation of your work (actual, laptop, video or, circumstances permitting, even a studio visit). Cross-disciplines encouraged; a painter with a dancer for example. Especially if you are serious about your artistic ambitions, these One-to-Ones are a must.

Reservations in person or call 610-683-6440. Reservations open September 1 and continue until fully booked. And, please don't wing it, prepare an agenda for your conversation.



Distances to Kutztown from:

Reading	20 m (0.5 hr)
Allentown	22 m (0.5 hr)
Easton	50 m (1.0 hr)
Lancaster	55 m (1.0 hr)
Harrisburg	65 m (1.5 hr)
Philadelphia	70 m (1.5 hr)
Scranton	90 m (2.0 hr)
NYC	110 m (2.5 hr)
Baltimore	125 m (2.5 hr)
D.C.	175 m (3.5 hr)

NAP preview editorial & design by John Lotte

James F. L. Carroll
 DIRECTOR

BOARD OF DIRECTORS

Emily A. Branch
 James F. L. Carroll
 Lincoln Fajardo
 Robert Flemming
 Patricia Goodrich
 Susan Lange
 Robert P. Metzger
 Ted Ormai
 Deb Schlouch
 Harry L. Serio
 Ellen Slupe
 Ann-Sargent Wooster

Emeriti:

Joanne P. Carroll
 Bart Wasserman
 William Zimmer

BOARD OF ADVISORS

Clytie Alexander
 Robert Dick
 Douglas Dunn
 Philip Glass
 Mary Griffin
 Patricia Johanson
 Mimi Johnson
 Klaus Kertess
 Michael Kessler
 James Melchert
 Andrew Miller
 Meredith Monk
 Ursula von Rydysvard
 Nancy Wolff, Esq

Emeriti:

George S. Barrell
 John Cage
 Kent Floeter
 Jon Gibson
 Keith Haring
 Robert Stanley

RECOGNITION

Ralph Bailits
 Eileen Baxter
 Steve Berardelli
 Janice Carapellucci
 Vicki DaSilva
 David D'Imperio
 Judy Geib
 Mark Innerst
 Kermit Oswald
 Lisa Oswald
 Tom Sterner

about

from page 1

NAP archives, NAP Limited Print Editions, Live On Paper: Book Forms, and other publications.

residencies

Since 1974, artist residencies have been the cornerstone of the New Arts Program. Today's most provocative and insightful visual, performing and literary artists and critics take part.

Each residency includes two days of personal one-to-one conversational meetings between the residency guest and members of the general public lasting an hour each. On the evening of day one, our guest conducts an open dialog with a public audience in a presentation/performance and/or exhibition context. This access to major talents—with NAP as a conduit—cultivates direct dialogue between artists and the public.

one-to-ones

One-to-one conversations are at the heart of the New Arts Program. During each residency there are a limited number of hour-long time slots available for private conversations with the visiting artist. One-to-Ones are free—details on page 1.

public presentations

On the first evening of each residency, the public is invited to a social hour of conversation with the guest artist, which could include a gallery talk, slides, video or audio, and in certain instances, a performance. Performances and exhibitions are held in an intimate, relaxed public setting.

exhibitions

Eleven months out of the year, our intimate galleries feature solo exhibitions of first-rate working artists from America and

abroad. Complimentary artist booklets, which include reproductions and conversation transcripts with residency artists, are available. Capping off each season is our ever-popular International Invitational Salon of Small Works.

the project wall

From 2013 to 2019, the New Arts Program's **The Project Wall** had given the public an opportunity to see artists' ideas and work in progress—a situation normally absent in a formal gallery setting. The Project Wall spanned a foyer gallery wall 8' high by 14' wide on which an invited artist presented a body of work that evolved over a 12-week period, often with public collaboration.

The Project Wall avoided being like a regular exhibition, but instead was a space in flux as each passing week brought on change.

Booklets including photos documenting the time line of each 12-week project are still available until they run out.

We retired The Wall following the fall 2019 installation that featured visual artist/teacher **George Shortess**.

reference library

Housed within the NAP Space, the **William Zimmer Reference Library** is an artist's and researcher's dream. The public is invited to use its resources at no charge. NAP members have exclusive borrowing privileges. Open gallery hours and by appointment.

Included in the collection are the personal libraries of artist Anne E. Neimann Hubbard and deceased critic/writer Bill Zimmer. Here you'll find:

BOOKS—Every subject imaginable for the artist.

PERIODICALS—Current and lots of back issues.

EXHIBITION CATALOGS—Dating back 40 years, from here and abroad.

VIDEO ARCHIVE—Featuring NAP Video Festival winning works and a collection of residency presentations recorded over the past 30+ years. On-site screening.

SLIDE ARCHIVE—Over 50,000 slides of works by contemporary artists. On-site viewing.

CONSULTING and technical assistance on studio and arts management, alternative and co-op spaces, housing, and mailings.

residency booklets

Beginning in 1997, each NAP exhibition and artist residency has been documented with a booklet which includes reproductions of the works and commentary by and about the artists. Exclusive transcripts from "New Arts Alive" TV conversations are often included. Booklets are available free of charge at events. A small fee is charged for booklets by mail or from prior residencies.

In order to include a full documentation, **Project Wall** booklets are unavailable until the closing day reception of each Project Wall installation or any time thereafter.

group gallery tours

Call to arrange for a gallery tour for your group or class. Educators are encouraged to bring their classes—elementary through college. We can also schedule an educational visit to your group or classroom.

nap tv

New Arts Program produces two live one-hour TV programs every month—**New Arts Alive** and **NAP Connection**. Both series are streamed live and available on demand at bctv.org. Over 450 episodes have been produced since our first airing in 1988 and over 170 can now be viewed on demand. Just about every NAP residency artist is invited to do an episode to present and

talk about their work. Find out more on page 8... and catch up.

the NAP store

Where else can you find a silk-screened Keith Haring poster for \$30? Gift certificates available. The NAP Store catalog appears toward the end of this *Preview*.

open Sundays

In addition to our Friday and Saturday hours, our galleries are open Sundays during our season from 11:00-3:00, except holidays. We're actually here most other days, so if you're in the neighborhood, give a ring or just knock.

website

Just a reminder if you ever find yourself without your *NAP Preview*, the latest one is waiting at newartsprogram.org. Plus there are past editions and lots more on the site to explore.

funding and support

New Arts Program would not be in operation without the generous support of its individual, organization and business sustaining sponsors; foundations; and a supporting membership base which includes persons like yourself. Funding is also provided in part by the Pennsylvania Council on the Arts, a state agency, and the National Endowment for the Arts, a federal agency.

Every so often the Program is blessed to have prominent performing artists donate time and talent for a benefit event. In April 2019 composer/musicians Philip Glass and Jon Gibson performed for an audience of 400 in Kutztown to benefit NAP. Glass, one of the greatest composers of our time, has been a longtime NAP advocate, engaging with us for eleven benefit concerts since 1985.

Your attendance at these events gives the New Arts Program a needed boost in our funding. They also serve as the perfect way to share the NAP experience with family, friends and associates. □



2021-2022 at a glance

newartsprogram.org
and on Facebook

fall

master printmaker, painter, teacher, author

Dan Welden

Sep 17, 18 (Fri, Sat)
Sep 17 (Fri)-Dec 12 (Sun)
Sep 17 (Fri 6-9:00)
Dec 12 (Sun 11-3:00)

Residency <one-to-one hour-long conversational meetings by appt>
Exhibition <FINDING AESOP'S FABLES>
Artist reception <gallery talk with Welden @ 7:30>
Closing day reception

musician/composer

Nathaniel Goossen

Oct 16 (Sat 7:30 pm)

Live concert <\$5 at the door (NAP members free). Followed by artist reception.
Doors open @ 7:00>

winter

sculptor, photographer, installation artist

Betty Beaumont

Jan 14, 15 (Fri, Sat)
Jan 15 (Fri)-Apr 24 (Sun)
Jan 15 (Fri 6-9:00)
Apr 24 (Sun 11-3:00)

Residency <one-to-one hour-long conversational meetings by appt>
Exhibition <OUT OF FASHION>
Reception <gallery talk with Beaumont @ 7:30>
Closing day reception

spring - summer

32nd annual international invitational

salon of small works

May 27 (Fri)-Jul 17 (Sun)
May 27 (Fri 6-9:00)
Jul 17 (Sun 11-3:00)

Exhibition
Artists reception
Closing day reception

One-to-one conversations
Exhibitions
Presentations/Forums
Performances
Television programs
Reference library/Archives
Publications

Galleries / Library / Archives / Office
173 W. Main Street
P.O. Box 0082
Kutztown, PA 19530-0082
610 683-6440
napconn@gmail.com

HOURS: 11:00-3:00 FRI/SAT/SUN
(other times call ahead or just
knock, we're here most days)

Welcome to our 47th season.
Most events are free to attend.
There is never a charge for
One-to-One conversational
meetings with our guests.
For up-to-the-minute event details,
call 610-683-6440.

september 2021						
s	m	t	w	t	f	s
			1	2	3	4
5	6	7	8	9	10	11
12	13	14	15	16	17	18
19	20	21	22	23	24	25
26	27	28	29	30		

october						
s	m	t	w	t	f	s
					1	2
3	4	5	6	7	8	9
10	11	12	13	14	15	16
17	18	19	20	21	22	23
24	25	26	27	28	29	30
31						

november						
s	m	t	w	t	f	s
		1	2	3	4	5
7	8	9	10	11	12	13
14	15	16	17	18	19	20
21	22	23	24	25	26	27
28	29	30				

december						
s	m	t	w	t	f	s
				1	2	3
5	6	7	8	9	10	11
12	13	14	15	16	17	18
19	20	21	22	23	24	25
26	27	28	29	30	31	

january 2022						
s	m	t	w	t	f	s
						1
2	3	4	5	6	7	8
9	10	11	12	13	14	15
16	17	18	19	20	21	22
23	24	25	26	27	28	29
30	31					

february						
s	m	t	w	t	f	s
		1	2	3	4	5
6	7	8	9	10	11	12
13	14	15	16	17	18	19
20	21	22	23	24	25	26
27	28					

march						
s	m	t	w	t	f	s
		1	2	3	4	5
6	7	8	9	10	11	12
13	14	15	16	17	18	19
20	21	22	23	24	25	26
27	28	29	30	31		

april						
s	m	t	w	t	f	s
					1	2
3	4	5	6	7	8	9
10	11	12	13	14	15	16
17	18	19	20	21	22	23
24	25	26	27	28	29	30

may						
s	m	t	w	t	f	s
1	2	3	4	5	6	7
8	9	10	11	12	13	14
15	16	17	18	19	20	21
22	23	24	25	26	27	28
29	30	31				

june						
s	m	t	w	t	f	s
				1	2	3
5	6	7	8	9	10	11
12	13	14	15	16	17	18
19	20	21	22	23	24	25
26	27	28	29	30		

july						
s	m	t	w	t	f	s
					1	2
3	4	5	6	7	8	9
10	11	12	13	14	15	16
17	18	19	20	21	22	23
24	25	26	27	28	29	30
31						



newartsprogram.org
and on Facebook

One-to-one conversations
Exhibitions
Presentations/Forums
Performances
Television programs
Reference library/Archives
Publications

Galleries / Library / Archives / Office
173 W. Main Street
P.O. Box 0082
Kutztown, PA 19530-0082
610 683-6440
napconn@gmail.com

HOURS: 11:00-3:00 FRI/SAT/SUN
(other times call ahead or just
knock, we're here most days)

Welcome to our 47th season.
Most events are free to attend.
There is never a charge for
One-to-One conversational
meetings with our guests.
For up-to-the-minute event details,
call 610-683-6440.

2021-2022 season

master printmaker, painter, teacher, author (USA, b. Bronx, New York, 1941)

Dan Welden



PHOTO: RICK WENNER

one-to-ones Fri and Sat Sep 17, 18, 2021

9-4:30 Individual hour-long
conversational meetings
with Welden by appt:
610-683-6440

exhibition <Finding Aesop's Fables> Fri Sep 17 through Sun Dec 12

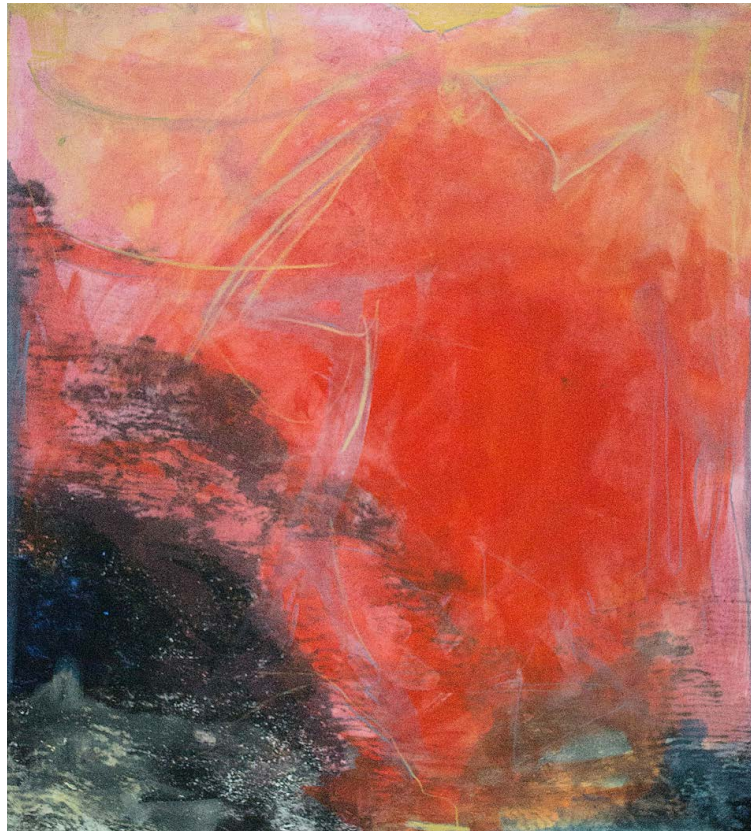
NAP Gallery, Kutztown
gallery hours: 11-3:00 FRI/SAT/SUN

reception Fri Sep 17

6-9:00 PM artist reception
7:30 PM gallery talk with Welden

closing day reception Sun Dec 12

11-3:00



Nationally and internationally recognized master printmaker **Dan Welden** has been a pioneer of alternative printmaking since 1970. He was the first artist to initiate Solarplate and water-based monotype workshops, placing him squarely in the vanguard of healthy and safe creative practice.

Welden is co-author of *Printmaking in the Sun* and producer of the film of the same title. He is the recipient

of numerous awards, including a Lifetime Achievement recognition from A/E foundation; a Professor Emeritus award from the Escuela de Beas Artes in Cuzco, Peru, and most recently a Pollock/Krasner Grant.

Ninety-three solo exhibitions into Welden's career, the Cape Cod Museum of Art mounted a mammoth collaborative exhibition of his studio works on paper along with collaborations with Willem de

"It is through a sense of 'awareness' that I experience the music of my art. When splurging in its sound, I become that Beethoven, to return its evolving echo, making impressions into one symphony; there is no ego intruding into that birth of pure energy."—D.W.

Kooning, Eric Fischl, Kiki Smith and Dan Flavin, to name but a few. He has been in 53 countries with numerous residencies including China, Belgium, New Zealand, Cuba and Peru.

A note on the NAP exhibition

The series "Aesop's Fables" is a series of symbolic gestures which employ visual opposites, including the hare and the tortoise and the grasshopper and the ant, as metaphors for the Yin Yang philosophy.

Resurrecting 50-year-old found zinc etching plates that had oxidized beyond redemption, Welden created these black and white works which are a tour-de-force of formal, yet enigmatic power. Making his own tools, the artist employed drypoint lines, salt etch, ink, paper and a press to subject the dilapidated plates to a maelstrom of mark-making gestures.

"The Color Sequel" consists of a hybrid series of the same images, augmented with acrylic, watercolor and crayon. Sneak a peek at danwelden.com.

Exhibition booklet available

Exhibition funding in part through the generosity of local businesses

live concert
Sat Oct 16, 2021

St John's UCC, Kutztown
 \$5 at the door (NAP members free)
 7:00 PM doors open
 7:30 PM performance, followed
 by artist reception



Nathaniel Goossen's early influences include a lot of classical music—especially Stravinsky and Philip Glass. “From those sources I fell in love with primitivism and repeating forms.” Later he became interested in DJ music and sampling—particularly DJ Shadow. While at Reed College in Portland, Oregon, Goossen spent most of his time at the college radio station, KRRC, absorbing as many musical genres as he could. After transferring to Bennington College (Vermont) he studied percussion and music healing with Milford Graves, electronic music with Joel Chadabe, and recording and sound design with Julie Last and Scott Lehrer. He continued to study electronic music, avant-garde composition, and film scoring while pursuing a Master’s degree at NYU Steinhardt.

Goossen has a keen interest in world music (from traveling to Kenya, Brazil, and China),

musician/composer (American, b. Williamstown, Massachusetts, 1980)

Nathaniel Goossen

“As a student I became very interested in how musical rhythm and tempo affects the heart when I studied percussion and music healing with Milford Graves. I use drums and percussion to affect one’s body as much as one’s perceptions.”—N.G.

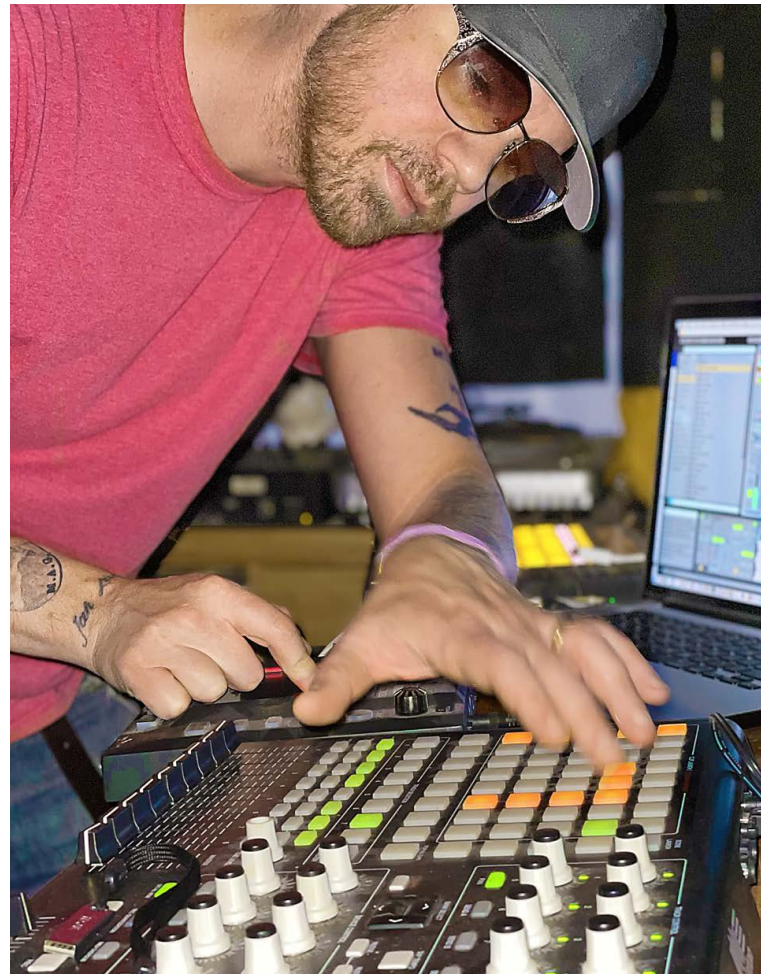
especially in the music and art of Haiti because “it achieves a form of spiritual expressionism that I strive for in my work and aesthetic.” Most recently his focus is on percussion. Collecting thousands of samples and loops as source material for a single project, he thinks of himself mostly as a collage artist.

On his NAP concert

“When the Covid-19 pandemic started in March of 2020 I thought about creating a musical journal of the events as I saw them as they were happening. My idea was to create a soundtrack to real life—a score for a sci-fi horror movie playing out before our eyes.

For this project I collected over 8,000 samples and loops to draw from—selecting medical, animal, and nature sounds, Asian percussion instruments, and sounds from the Virus TI2 synthesizer.

“While I was collecting



these sounds I began writing down dozens of song titles to try to sketch out the progression of the music. Once I had the ingredients I assembled everything into performable songs using Ableton Live, an APC40, and a Push controller.

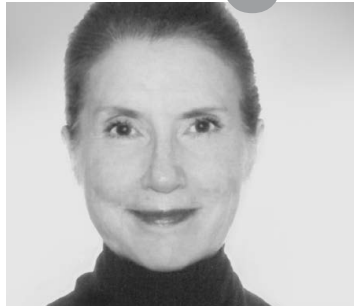
“The music is open to interpretation and does not

require any specific knowledge. Even with the song titles as your guide it is decidedly an abstract experience. I tried to mirror the events I was experiencing but it is up to the listener to bring their own imagination to the music.”

Performance funding in part through the generosity of local businesses

sculptor, photographer, installation artist (American, b. Toronto, Canada, 1946)

Betty Beaumont



"I step directly into the arena of public discourse with the possibilities of my work contributing towards transformations with social dimensions." —B.B.

Since the early 1970s **Betty Beaumont** has produced provocative work in a variety of media including photography, installations, sculpture, public interventions and new media. Her work is internationally recognized for its incorporation of solution-based sustainability strategies, which reflect contemporary, historic and cultural perspectives and environmental and social conditions.

Beaumont has shown at numerous museums and galleries around the world; in New York at Whitney Museum of Art, MoMA P.S. 1, Queens Museum, and Hudson River Museum (Yonkers) and NYC galleries: The John Gibson Gallery, Carriage Trade, UBS Art, Esso, American Fine Art, Damon Brandt, and Exit Art.

Beaumont's diverse body of work challenges global social awareness, as well as socioeconomic and ecological practices.

One of Beaumont's most notable works is the environmental installation *Ocean Landmark* (1978-1980), a



Untitled (Crushed) White with Yellow, 2010,
 paper, ink, string, 9" x 9" x 9"

grand-scale underwater project. The installation consists of 17,000 neutralized coal fly-ash blocks strategically submerged three miles off Fire Island National Seashore to lay on the floor of the Atlantic Ocean, creating an artificial habitat for marine life, which is fished and feeds people.

Beaumont received a BA from California State University (1969) and an MA from the University of California at Berkeley (1972). She has held

academic appointments at the University of California at Berkeley, SUNY Purchase, the School of the Art Institute of Chicago, New York University, and Columbia University in New York City.

Toronto born and raised in Los Angeles, Beaumont works in downtown New York, her home since 1973.

Exhibition booklet available

Exhibition funding in part through the generosity of local businesses

one-to-ones Fri and Sat Jan 14, 15, 2022

11-3:00 Individual hour-long
 conversational meetings
 with Beaumont by appt:
 610-683-6440

exhibition <Out of Fashion> Fri Jan 14 through Sun Apr 17

NAP Gallery, Kutztown
 gallery hours: 11-3:00 FRI/SAT/SUN

reception Fri Jan 14

6-9:00 PM artist reception
 7:30 PM gallery talk with
 Beaumont

closing day reception Sun Apr 17

11-3:00



NAP 32nd annual international invitational

salon of small works



above: NW corner of NAP main gallery during the 2021 edition of the annual salon.
 left: *Dogs Playing Cards*, an oil painting by Pennsylvania artist Louis Rice exhibited in the 2021 salon. right: Another marvelous painting on canvas in the same show, this one by Ion Sirota of Romania (untitled).

exhibition
Fri May 27 through
Sun Jul 17, 2022

NAP Gallery, Kutztown
 gallery hours: 11-3:00 FRI/SAT/SUN

opening reception
Fri May 27

6-9:00 PM artists reception

closing day reception
Sun Jul 17

11-3:00 PM

Our salon is a regional gallery goers' favorite. Opening night is a blast—it's always packed and many of the artists are there. There is tremendous diversity of styles and media, including video. A total of 115 artists were represented at the last

salon—71 from 5 states and 44 from 28 foreign countries. The number of incredible international entries makes this show that much more exceptional.

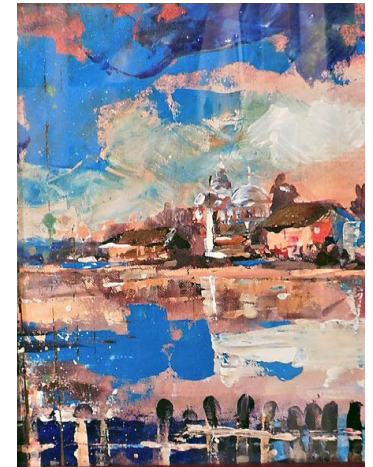
Each artist is represented by one recent work measuring up to 200 sq. inches. Most works are for sale, reasonably priced, and many already framed. It's nearly impossible to walk away without claiming at least one piece. Some visitors have made it an annual tradition to buy at least one piece.

Artists interested in exhibiting, see the **Call for Entries** page toward the end of this *Preview*.

Exhibition booklet available

7

Exhibition funding in part through the generosity of local businesses



**grab a bite or brew,
 get 10% off**

On your next NAP visit, why not grab a bite or brew at one of our supporting eateries. Show your NAP membership card; some offer 10% off to NAP members. *Supporting businesses are listed at the end of this Preview.*

call for entries
for the 2022 salon;
that's right, this one

All artists—local, national, and international—are invited to exhibit. Unlike in previous years, no need to apply ahead. Guidelines and delivery times on page 10.

Deliver in person: May 5-8, 2022
Ship to arrive: May 2-8

nap on demand 101

Television program funding in part by the Pennsylvania Council on the Arts, Berks Community Television, local businesses, and individuals

New Arts Program produces two live one-hour TV programs every month that are televised to over 110,000 cable households in the Berks County area and streamed live over www.bctv.org. Over 450 NAP programs have been produced at Berks Community TV in Reading since our first airing in 1988.

new arts alive

Our flagship series, **New Arts Alive**, features a single guest—a painter, sculptor, writer, poet, critic, architect, choreographer, dancer, musician, composer, performance artist, curator, or gallery dealer—in conversation about their passion of how and why they do what they do. Just about every NAP residency artist is invited to do an episode to present and talk about their work. NAP director James Carroll or critic Ron Shira add commentary.

nap connection

In 1992, a second series was added, **NAP Connection**—Critic Ron Shira covers the regional arts scene. The program often includes live interviews with regional artists.

streaming live

James Carroll hosts “Alive” and **Ron Schira** is NAP Connection’s reporter and host. No matter who James or Ron has on board as a guest—or what their topic—the conversation is guaranteed to be thought provoking. Viewers can join the dialog by phone during the live BCTV telecasts. Dial in live at 610-378-0426. Shows are streamed live on the Web at www.bctv.org.

Available anywhere

Streamed live on www.bctv.org:
FIRST Wednesdays 6:00 PM
FOURTH Wednesdays 7:00 PM

In Berks County, tune in BCTV twice monthly for live broadcasts:

FIRST Wednesdays 6:00 PM
(Repeats that Fri 9:00 PM;
Sat 5:00 PM; Sun 8:00 AM)

FOURTH Wednesdays 7:00 PM
(Repeats that Fri 10:00 PM;
Sat 6:00 PM; Sun 9:00 AM)

BCTV availability:

- Comcast Reading/Hamburg Channel 13
- Comcast Oley Channel 4
- Service Electric Cablevision Channel 19 (Birdsboro, Fleetwood, Kutztown)

Berks Community Television is at:
1900 N. 13th St., Reading, PA 19604
610-374-3065

on demand anytime

Bctv.org has made accessing recent and past episodes of “New Arts Alive” and “NAP Connection” easy peasy. Follow these steps for either series. We show laptop screen shots, but adapting them to your phone should be no problem.

over 170 episodes

To watch any of 100+ previous episodes of “Alive” dating back to 2010, or the nearly 70 episodes of “Connection” dating back to 2008, follow the last couple steps at right.

follow this path:

bctv.org

Go to www.bctv.org



On the homepage, open MENU.



From the MENU topics, select “Arts & Culture.”



Programs

Hovering over the “Arts & Culture” box, select “Programs” icon to reach the Programs page.



Scroll down through the programs to “New Arts Alive” (or “NAP Connection”)

—On your computer/laptop, click “Read More.”

—On your phone/iPad, click the image.

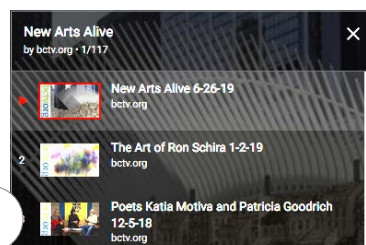


The most recent New Arts Alive episode appears, ready to watch and share. Enjoy.

To watch any of 100+ previous episodes dating back to 2010:



Click the Playlist icon located in the upper right-hand corner of the current video frame.



Select from a list of 100+ New Arts Alive episodes.

Follow all the same steps for NAP Connection and you’ll reach a playlist of nearly 70 episodes dating back to 2008.



Circa 2011, from left: Eyal Danieli, Lauren Gohara, Doug Zucco

10 years back

We're tripping back to the '11-'12 NAP season. Joining us then for residencies were:

Eyal Danieli
painter

Lauren Gohara
painter/printmaker

Doug Zucco
master printmaker/educator

A lot can happen in 10 years. This section is a time capsule—intended to spark memories for some—recalling the artists as they were then, including their portraits. It is not our intent here to bring things up to date.

As has been the case since 1996, booklets profiling each of these residency artists were made available which included background information, images and an interview. If you are in the gallery, ask, or drop us a note and a check for \$10 and we'll send you a pack of the three artist booklets produced for the 2011-2012 season. Supply is limited.

NAP's 2011-2012 season took off a month later than usual with **Doug Zucco's** residency and exhibition beginning in November. Zucco is a master printmaker and co-founder of White Crow Paper in Fleetwood where at times he can be found collaborating with other artists developing and producing limited-edition books and custom papers.

Zucco's own work is found in many prestigious collections, including the Philadelphia Public Library Rare Book Collection;

Pew Charitable Trust/Phila.; AT&T/Atlanta; Delaware Art Museum/Wilmington; Comcast World Headquarters/Phila.; IBM/New York City, Atlanta; DuPont/Wilmington, Del.; and Hallmark Cards, Chase Manhattan Bank and Chemical Bank—all in New York City.

Zucco has had solo exhibitions at the John Greenhutt Gallery (Albany); the Rosenfeld Gallery (Philadelphia); and Eve Mannes Gallery (Atlanta) and through the years has predominantly shown on the east coast.

For a number of years, Zucco and the New Arts Program have been involved in a joint project called Live On Paper: Book Forms, working with artists of various creative disciplines to produce limited editions.

Zucco has received grants from the Ford Foundation and Pa. Council on the Arts. He has taught at Cedar Crest College and in the Lehigh County Community College Associate Art Program at the Baum School of Art in Allentown.

[Today Zucco continues to teach, create, and helm White Crow Paper.]

Zucco's exhibition was followed by another in January of paintings by **Eyal Danieli**. Danieli exhibited his work in various one-man and group exhibitions in the US and in Europe, among them: MOMA/PSI, the International Print Center in New York, and the Daniel Weinberg Gallery in Los Angeles. At the time of this NAP residency, he was

represented by Elizabeth Harris gallery in New York and Kudlek van der Grinten Galerie in Cologne Germany.

Reoccurring themes in Danieli's work at the time were helicopters, bombers and tanks, a figure raising his hand similarly to the Nazi salute, military camouflage, camels, veiled Muslim women, and Hasidic figures.

Danieli was born in Pittsburgh in 1961. He studied painting at Bezalel Academy in Jerusalem and at the New York Studio School. Among his honors is a New York Foundation for the Arts award in drawing.

[Today Danieli continues to exhibit and lives in New York. In 2020 he had his fourth solo exhibition at Elizabeth Harris gallery in New York.]

Next up, Manhattan-based painter/printmaker **Lauren Gohara**, was probably best known for her series of paintings "New York Feathers"—prime examples of her iconic portraits of leaves, seeds and other—in her words—"organic drifters." Gohara's NAP residency included concurrent exhibitions in March and April at Northampton Community College in Bethlehem and the NAP Kutztown gallery.

Gohara's work has been shown widely from New York to Hawaii, to Israel and the Netherlands. Her breakthrough solo show was at Metaphor Contemporary Art in Brooklyn in 2005. Her work has been acquired by private and public collections in this country and abroad and include a group of 22 paintings purchased by the US State

Department for their US Embassy in Nigeria.

Gohara grew up on Maui and studied biology at the University of Hawaii. For a time, she worked at electronics companies by day, studying ballet and jazz dance at night. In 1994 she received a BFA from the Art Center College of Design/Pasadena and in 1999, a MFA from Hunter College/N.Y.

[Today Gohara lives in New York and continues to exhibit.]

As in other years, the gallery season ended with NAP's annual Invitational Salon of Small Works ... in its 23rd year. Opening around Memorial Day and closing mid-July, this was then and still is the summer exhibition to see in the greater mid-Atlantic area. Visitors numbering in the hundreds streamed in on opening night.

Still active at the time was NAP's Artists & Writers Forum—a monthly gathering of musicians, poets, writers, and visual and performing artists held on the third Tuesday eight months out of the year at the NAP Space. Artists brought in examples of their work for discussion and conversed about ideas, spawned collaborations, pooled resources, discussed materials, and held workshops with special guests. **Lincoln Fajardo** kept order.

If you're interested in knowing who was around 20, 30 years ago, pick up a copy of *NAP Synopsis* or check it out online at newartsprogram.org and see who was here every year going back to 1974. Familiar names like John Cage, Keith Haring, Philip Glass, and Laurie Anderson represent the tip of the iceberg.



newartsprogram.org
and on Facebook

One-to-one conversations
Exhibitions
Presentations/Forums
Performances
Television programs
Reference library/Archives
Publications

Galleries / Library / Archives / Office
173 W. Main Street
P.O. Box 0082
Kutztown, PA 19530-0082
610 683-6440
napconn@gmail.com

HOURS: 11:00-3:00 FRI/SAT/SUN
(other times call ahead or just
knock, we're here most days)

Most events are free to attend.
There is never a charge for
One-to-One conversational
meetings with our guests.
For up-to-the-minute event details,
call 610-683-6440.



call for entries

visual artists

new arts program annual international invitational salon of small works

WHAT: Started in 1990, this yearly event has been the climax of the NAP season. Artists are invited to submit one recent original work in any medium, measuring up to 200 sq. in. Sale of work is encouraged (15% commission).

The annual NAP Salon typically opens the 4th Friday in May and closes the 3rd Sunday in July. As a rule of thumb, works are dropped off three weeks prior to the opening. Exact dates/times for the 2022 salon at left; for 2023, TBA.

LOCATION: 173 W. Main Street, Kutztown, Pa. 19530

Works above by (l to r) Amy Schade, Dragana Grujicic, and Gayatri Horvat, were exhibited at the 2021 salon.

32ND EDITION (2022)

EXHIBIT OPENS: Friday, May 27, 2022. Artists reception 6:00-9:00

EXHIBIT CLOSES: Sunday, July 17. Closing reception: 11:00-3:00

DEADLINE TO EXHIBIT: Follow dropoff/ pickup info. No pre-application.

TO QUALIFY: The annual NAP Salon is open to any artist—local, national and international. NAP membership is appreciated but not required.

TO APPLY: Unlike in previous years, pre-application and slides are no longer required to exhibit. Delivery is all that is required.

ENTRY FEE: \$5 US due with entry delivery.

RESTRICTIONS:

- One work per artist
- Work completed within the past two years
- Size limit: 200 square inches, including frame
- Works are intended to hang on a wall (except video/film). Work should have hanging hardware installed (wire, etc)
- Label on back:
 - artist's name
 - title of work
 - date
 - medium
 - dimensions: H×W (×D)
 - price (15% commission will be deducted from price)
 - contact phone # and/or email
- Video and film entries must be on DVD, 14 minutes or less, including credits (screening accommodations provided)

DROPOFF/PICKUP

IN-PERSON DROPOFF:

May 5-8, 11:00-3:00.
\$5 US entry fee due at this time.

SHIPPING DELIVERY:

Ship to arrive May 2-8. Enclose \$5 US entry fee (check, money order). Artist pre-pays delivery postage/freight costs, both ways.

ENTRY DELIVERY LOCATION:

New Arts Program
P.O. Box 82
173 W. Main St.
Kutztown, PA 19530-0082

ENTRY PICKUP DATES:

In person pickup
— July 17, 3:00-5:00
— July 18 and 19, 11:00-3:00

Shipped works require prepaid postage and will be returned July 25.

MORE INFO

610-683-6440
napconn@gmail.com
www.newartsprogram.org
Facebook: New Arts Program

once a year pledge thirty to NAP



New Arts Program cannot survive on funds from only the PA Council on the Arts, foundations and businesses. NAP needs your support. Individual support is crucial to keeping small and unique organizations like the NAP afloat. By becoming a New Arts Program annual supporting member, you help make the following opportunities available *free to the public*:

- Conversational one-to-one consultations with residency artists
- Exhibitions and exhibition booklets
- In-house use of professional art reference library
- NAP television programming • This events calendar

Additionally, supporting members receive:

- Free admission to performances (excludes benefit concerts)
- Discount on prints and artwork (some exceptions)
- Art reference library exclusive borrowing privileges
- Satisfaction of keeping the New Arts Program vital

NAP is a unique nonprofit art resource organization dedicated to providing a forum for the public to interact one-to-one with today's most provocative and insightful artists from the literary, visual and performing arts.



supporting
member
application



- Check one: \$30.—**INDIVIDUAL** one year (365 days)
 \$50.—**FAMILY** one year (adult couple & their children)
- This is a renewal (No lapse. Extends effective expiration date by 365 days.)
- I am pleased to include an additional tax-deductible gift to support NAP's goals:
- \$200 \$150 \$100 \$ _____
- I wish this gift to be used exclusively for the NAP Endowment Fund.
- I wish to remain anonymous.

TODAY'S DATE (MONTH/DAY/YEAR) ____ / ____ / ____

NAME(S) _____

OCCUPATION/DISCIPLINE _____

ADDRESS _____

CITY/STATE/ZIP _____

EMAIL _____

PHONE (_____) _____

Mail with check to: New Arts Program, PO Box 0082, Kutztown PA 19530-0082

fine art finds

signed limited edition prints from NAP collection for sale

The last our of John Cage prints is sold, but New Arts holds many other museum-quality art works that are intended for sale. Like the Cage prints, most are from the **NAP Limited Print Editions** collection which consists of over 60 editions by cutting-edge visual and performing artists created between 1979 and 2007, including an edition by famed choreographer Bill T. Jones.

These works by composers, architects, choreographers, sculptors, painters and critics were created during residencies at New Arts Program. Many were individually hand painted or otherwise altered by the artists and are remarkable for their ingenuity and idiosyncratic use of the medium. The small print runs of etchings, lithos, monotypes, and silk-screen prints number somewhere from two to 25 per signed edition.

We often have available for sale other fine works that are periodically donated to the Program. Private collector, corporate, gallery, and museum inquiries are welcome. Call or email us and we'll fax or email you a complete list of works. Discount pricing is available to NAP members. Sales benefit NAP. Please call for an appointment (610-683-6440). You won't leave empty-handed!

Signed prints or other works by the following artists are for sale:

Roberta Allen, sculptor
Robert Ashley, musician/composer
Connie Beckley, sculptor
Johanna Boyce, choreographer/dancer
Glenn Branca, musician/composer
John Cage, composer [sold out]
Ping Chong, multimedia
Efrain deJesus, painter
Tullio Desantis, artist
Peter Eisenman, architect

Molissa Fenley, choreographer/dancer
Ellen Fisher, performance artist
Jon Gibson, musician/composer
Jeremy Gilbert-Rolfe, painter/critic
Malcolm Goldstein, musician/composer
Peter Gordon, musician/composer
Edgar Grana, musician/composer
Denise Green, painter
Marcia Hafif, painter
Keith Haring, painter
Bill T. Jones, choreographer/dancer
Ralph Lemon, choreographer/dancer
Frank Lima, poet
Alvin Lucier, musician/composer
Joseph Masheck, art historian/critic
Steven Paul Miller, poet
Michael Morin, printmaker
David Moss, musician/composer
Steve Poleskie, artist
Lucio Pozzi, sculptor
David Shapiro, poet/critic
Irene Stein, artist
Barbara Strawser, painter
Valentine Tatransky, art historian/critic
Valery Taylor, sculptor
Julius Tobias, sculptor
Bernard Tschumi, architect
Maryann Unger, sculptor
Peter Van Riper, musician/composer
Ursula Von Rydingsvard, sculptor
Lawrence Weiner, painter
Arnie Zane, photographer/dancer/
choreographer

collectible posters

Along with our limited-edition print collection, the Program currently offers some attractively priced collectible posters, including two **Keith Haring** editions (*shown on page 15*) and one by **Robert Stanley**. We're especially fond of Stanley's 1985 edition, available signed and unsigned. This is a big one by an important twentieth-century American artist, striking in any office setting. View and purchase posters in person at the NAP Gallery. Or mail order from the **NAP Store**. See next page.



John Yau/Max Gimblett, *Leaves from a Chinese Album*, 2003, handmade paper, copper, 21" DIAMETER X 1" DEEP, edition of 12 albums. Each one includes 15 leaves. Pictured, six of 15 leaves with their copper canister in a gallery setting.

books out of bounds

Live on Paper: Book Forms— Since 1995, NAP and White Crow Paper Mill have collaborated to invite internationally recognized artists in the literary, visual and performing arts to create limited editions which stretch the boundaries of book form. These unique exhibition pieces, limited to editions of 10 to 12, can be purchased at NAP.

Collaborating with papermaking professionals at White Crow's rural facility in Fleetwood, Pa., each artist controlled all aspects of their book's production.

White Crow was established in 1980 by papermakers/printers Doug and Helene Zucco in order to provide quality pulp for their own expressive use as artists.

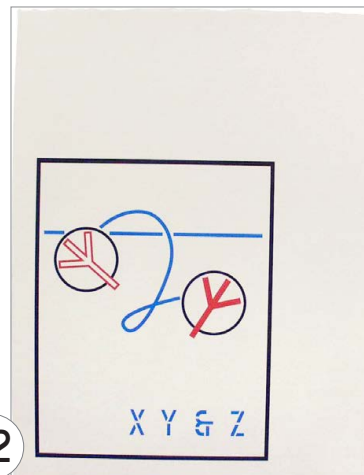
Book forms by these artists are for sale:

Clytie Alexander, painter
Molissa Fenley, choreographer/dancer
AP Gorney, visual artist
Dan Hurlin, performance artist
John Jesurun, performance artist
Ralph Lemon, choreographer/dancer
Dan Welden, painter/printmaker
Michael Winkler, painter
John Yau, poet, with Max Gimblett, visual artist

Weiner untitled

A year before the Whitney Museum of American Art mounted his 40-year retrospective in 2008, **Lawrence Weiner** created this exquisite work to benefit New Arts Program. Measuring 15" x 12," it was offset printed in three colors by **Hawk Mountain Printing**, Leesport, Pa., in an edition of 40, signed. Still available for \$1,600 each.

Lawrence Weiner, untitled, 2007, archival Epson print on handmade cotton paper, edition of 40, signed, 15" x 12"



the nap store

We reserve the right to limit quantities. All items also available for purchase at the NAP Gallery.

“Crating, Packing and Shipping Art” DVD—our top seller

The most thorough, professional, reliable documentation of its kind—a must for any artist or curator.

CRATING, PACKING AND SHIPPING details various crate types and includes an invaluable segment on “markings for shipping.” Produced by the New Arts Program and directed by David O’Connell of OCS Packing & Crating, the DVD is packed with trade secrets you can’t find anywhere else. Printed transcript included. 80-minutes.

DVD \$30. ITEM #1011

VHS \$20. CLOSEOUT ITEM #1012

Kent Floeter monograph

BUILDING FLATNESS, THE ART OF KENT FLOETER—Painter Kent Floeter (1900-2004) oversaw the creation of this monograph that, in both beauty and craft, is a benchmark of book publishing. Text contributions by Chuck Close and Raymond Ryan. Published in 2003 by Stephen David Editions Ltd, NY. 12.5”w x 11”h x 1,” 208 pages with 139 full-page color reproductions. (\$100 used on Amazon®.)

HARDCOVER (NEW) \$65. ITEM #1016
+ \$10. S&H U.S. only

Robert Stanley signed poster

We love this 1985 edition, available signed and unsigned. This is a big one by an important twentieth-century American artist, striking in any office setting.

STANLEY 1985 POSTER (41”H x 26”)
SIGNED \$600. ITEM #1044

STANLEY 1985 POSTER (41”H x 26”)
UNSIGNED \$20. ITEM #1045

+ \$20. S&H U.S. only, one or more

Out of print

Our inventory of these NAP publications is dwindling—when they’re gone, they’re gone.

DANCE ON PAPER—Color catalog for 2001 exhibition held at Lehigh University. Visual works by over 50 choreographers. 53 pages.
SOFTCOVER \$9. ITEM #1035

IN AND OUT OF KUTZTOWN, 1974-1981

—An image-filled documentary of the first seven years of the New Arts Program. Over two inches thick! A keeper. 426 pages.

SOFTCOVER \$30. ITEM #1033
+ \$10. S&H U.S. only

IN AND OUT OF NEW YORK—Catalog for 1980 NAP exhibit held at White Column in NYC with works by former Kutztown University students who lived and worked in NYC. 40 pages.

SOFTCOVER \$4. ITEM #1034

PRINTS OF NON-PRINTMAKERS

—Catalog for 1988 exhibition held at Lehigh University—works by musicians, choreographers, and architects created through NAP Editions. 22 pages.

SOFTCOVER \$4. ITEM #1036

JULIUS TOBIAS: WORK FROM 1965 TO 1992

—Exhibition catalog. 48 pages.

SOFTCOVER \$4. ITEM #1037

N.A.P.TEXT(s)—Literary journal loaded with stimulating writing, poetry, and visuals by literary, visual, and performing artists. #1-3 are exquisite 16-page booklets; #4-6 are in a stylin’ folded poster format. (#7 sold out)

PER ISSUE \$3. ITEM #1031

Keith Haring appearances 2-disc DVD set

KEITH HARING DVD—In 4 segments. Part 1: Kutztown native Haring in 1982 working on five drawings (30 min). Part 2: Haring animation originally shown in Times Square. (29 sec). Part 3: His 9/10/87 opening at NAP Space. Keith spent nearly five hours hanging with the crowd of 750 (10 min). Part 4: A 1982 public presentation by Haring (45 min). Printed transcript included. 86-minutes total.

DVD (2-DISC) SET \$33. ITEM #1013
VHS \$15. CLOSEOUT ITEM #1014

© K. Hamin

Haring posters sellout alert

In 1989 Keith Haring created a graphic for a concert poster screen printed the next year. A few of these first-run beauties remain—flea market priced... ditto the oversized 1984 “Kutztown Connection” benefit poster with Keith’s iconic heart graphic. Check them out on page 15 or in person at the NAP Gallery.

1990 HARING SILKSCREENED POSTER (22”H x 17”) \$30. ITEM #1042

1984 HARING OFFSET POSTER (33”H x 20”) \$30. ITEM #1043

+ \$20. S&H U.S. only; one or more



Glass, Gibson, Ashley, Reich, 6 others on CD compilation

CD CONNECTION is an exclusive NAP compilation of instrumental and vocal works by some of new music’s most influential composers. Each work was personally selected by its composer for this disc. Features the first ten musician/composers who had residencies at the New Arts Program: Philip Glass, Steve Reich, Jon Gibson, Meredith Monk, Robert Ashley, Malcolm Goldstein, Joan La Barbara, Connie Beckley, Peter Van Riper and Glenn Branca. One disc. Released 1996.

LIMITED-EDITION CD \$40. ITEM #1015

NAP gift certificates

For the artist or art lover in your life. Gift certificates can be applied to membership, artworks, NAP Thrift Shop items, and NAP Store items. \$25. (no S&H fee) **ITEM #1050**



Always in style

Choose from two classic Keith Haring designs or Lawrence Weiner’s “Bridge” graphic silk-screened on back. All shirts, NAP logo on the front. Heavyweight 100% pre-shrunk cotton. Specify white or black for Keith Ts. Specify S, M, L, XL, XXL

BRIDGE (WHITE) \$20. ITEM #1021
KEITH HEART \$30. ITEM #1022
KEITH SCARECROW \$30. ITEM #1023

NAP store orders

ITEM #	ITEM NAME OR HELPFUL DESCRIPTION	SIZE/COLOR	QTY	COST PER ITEM	TOTAL
_____	_____	_____	_____	\$ _____	\$ _____
_____	_____	_____	_____	\$ _____	\$ _____
_____	_____	_____	_____	\$ _____	\$ _____
_____	_____	_____	_____	\$ _____	\$ _____
_____	_____	_____	_____	\$ _____	\$ _____
_____	_____	_____	_____	\$ _____	\$ _____
_____	_____	_____	_____	\$ _____	\$ _____

MERCHANDISE TOTAL \$ _____

SHIPPING AND HANDLING: Unless item is marked, apply the following fees:
1 item \$3. | 2-3 items \$4.50 | 4 or more items \$6. \$ _____

Shipping is U.S. only. Out-of-country ordering, please call 610-683-6440.

TOTAL AMOUNT DUE (add merchandise + shipping) \$ _____

Make check payable to: *New Arts Program*

NAME _____

ADDRESS _____

CITY/STATE/ZIP _____

PHONE (_____) _____ EMAIL _____

13

Send with check to: New Arts Program, POB 0082, Kutztown, PA 19530-0082



While **NAP Preview** acts as our annual calendar and a way to put the New Arts Program in your lap in a printed or on-screen form as a PDF, access to it for most of the public is only through our website—

newartsprogram.org. If your copy of the *Preview* came from the website, indulge us. But if you picked up a printed edition somewhere else, maybe you are unfamiliar with the site. We're here to change that.

Number one, our website is the easiest way to guarantee you have a copy of our latest *Preview* as soon as it is published, usually in the latter part of July.

If you click on *Events and Schedules* in the menu, in addition to finding the latest *Preview*, you have access to downloads of all editions dating back to the 2013-2014 season—fun reads especially if you attended some of the events.

Newartsprogram.org is a great shortcut to **NAP On-Demand TV** programming. Two clicks and you can watch a recent show and have access to a library full of recorded artists' interviews.

If you haven't already seen a copy, don't miss **NAP Synopsis** which can be located under the *Artists and Synopsis* tab. Stroll down memory lane or explore NAP's amazing 47-year history. Residencies by over 450 artists, writers and performers are chronologically listed—1974 onward—along with other NAP highlights. Scroll to the very end of the page for a PDF download of your own copy of the complete *Synopsis* (use *Synopsis continued* link).

Wander around the site to discover a short teaser video about **Keith Haring's** connection to New Arts. (The full Haring video is for sale at the NAP Store (page 13 in this *Preview*.)

the nap store

FEATURED ITEM

Glass, Gibson, Ashley, Reich, 6 others on CD compilation

CD CONNECTION is an exclusive NAP compilation of instrumental and vocal works by some of new music's most influential composers. Each work was personally selected by its composer for this disc. Features the first ten musician/composers who had residencies at the New Arts Program. One disc. Released 1996.

LIMITED-EDITION CD \$40. ITEM #1015

Order form on previous page.

ABOUT THE PROJECT

CD Connection is a work of art—actually ten works of art—representing some of America's most influential new music composers of the past century. Released in 1996, our limited-edition CD contains nearly 70 minutes worth of instrumental and vocal works, with first-time ever releases like Meredith Monk's rare gem, *Duet for Voice & Echoplex*, performed at Expo '67. The sound is beautifully mastered by Peter Van Riper and each performance was personally selected by its composer especially for this collection.

Affectionately referred to as "NAP The Early Years," *CD Connection* features ten musician/composers who were among the first 100 artists painters, sculptors, choreographers, composers and critics to have

participated in consultation residencies during New Arts' first seven seasons—1974 through 1982. Philip Glass and Steve Reich joined us during our very first season ... the rest is history.

If you've been paying attention, you may have noticed the cost of this collector's item has doubled since last year. Forgive us, but we only have a handful remaining with no plans for a reissue. This could be your last chance to grab a copy that's not bootlegged.

nap thrift shop

new and used artist materials and other finds for sale—shop Sep-July

NAP Space, Kutztown
During gallery hours
FRI/SAT/SUN 11-3:00
No mail orders
Prices good through 7/12/2022

Artists looking for good deals on artist materials and equipment can strike gold at the NAP Thrift Shop. An array of items is available and the list is constantly changing. A partial inventory is noted here. Profits benefit New Arts Program.

Items wanted for resale

Do you have books, art supplies, materials, cameras, nice frames, or working electronics lying

around or in storage? Drop off items anytime during gallery hours or call 610-683-6440 to arrange for pickup. Donations are tax-deductible.

First run classic and late Haring concert posters

We're letting the last of our Keith Haring concert posters go at thrift shop prices, so we thought why not include them in our thrift shop. There are two posters—1990 "Benefit Concert" (the black silk-screened one at right) and 1984 "The Kutztown Connection" pictured below. Signed '84s sold out at \$600, but you can still get the identical first-run poster, minus the hand sig, for \$30. Haring's dated sigs are reproduced in the graphics of both posters anyway. You might try striking a deal buying both.

Best Artist super heavy-duty pine stretcher bars assorted sizes to 7' at 2014 prices.

Stretched cotton canvas, 5/8" profile, stapled on back (10 packs available each size; 2 to a pack) 18 x 24"-\$5.00 pack; 16 x 20"-\$4.00 pack; 12 x 16"-\$3.00 pack; 9 x 12"-\$2.00 pack

Cotton canvas, 9 oz: 72" wide-\$5.00/yd

Jerry's cotton duck, 15 oz double weave: 96" wide-\$13.00/yd

Utrecht cotton duck, 15 oz: 76" wide-\$9.00/yd

Utrecht cotton duck, 15 oz: 60" wide-\$7.00/yd

Cotton canvas, 15 oz double weave: 76" wide (retail \$19.00/yd)-\$9.00/yd

Cotton canvas, 15 oz double weave: 60" wide (retail \$15.00/yd)-\$8.00/yd

SoHo #133 linen, 15.17 oz: 82.67" wide-\$24.00/yd

SoHo #38 linen, 14.1 oz: 66.9" wide-\$15.00/yd

SoHo #42 linen, 12.7 oz: 66.9" wide-\$10.00/yd

Gold leaf metal frame with glass, 8 7/8 x 13" with 2 1/4" matt-\$20.00

Pan pastels—over 50% off retail

New Radius toothbrushes (retail \$10)-\$5.00 ea

Air gun and cup, never used (retail \$150)-\$75.00

Edit suite: Videonics-A/B-1 roll edit controller, never used (retail \$200)-\$40.00

Kodak slide trays-\$1.00 ea (15)

Golden Artist Colors "Just Paint" publications—free

1990 Keith Haring silkscreened poster "Benefit Concert" [22"h x 17"]-\$30.00

1984 Keith Haring offset poster "Kutztown Connection" [33"h x 20"]-\$30.00

VHS closeout—Keith Haring Appearances [see The NAP Store for info]-\$15.00

BENEFIT CONCERT



**FRED FRITH
JON GIBSON
MALCOLM GOLDSTEIN
LENNY PICKETT
JOHN ZORN and a Special Guest**



ST. JOHN'S UCC
WHITEOAK AND WALNUT
STREETS
KUTZTOWN, PA

THURSDAY, 26 APRIL 1990, 8 PM

Tickets are available for \$20 or a Program Membership at the door or at the
NEW ARTS PROGRAM 173 W Main Street, Kutztown PA, 215-683-6440.

← 22" x 17"

↓ 33" x 20"



THE KUTZTOWN CONNECTION

The Symphony Space
Broadway at 95th St.
New York, New York

Friday
September 28, 1984
8:00 pm

Saturday
September 29, 1984
2:00 pm

Saturday
September 29, 1984
8:00 pm

Performances to Benefit the New Arts Program of Kutztown, Pennsylvania

James F. L. Carroll,
Director

**Robert Ashley
Connie Beckley
David Gordon
Bill T. Jones
Richard Landry
Peter Van Ripper
David Shapiro
Arnie Zane**

**Johanna Boyce
John Cage
Constance DeJong
Ellen Fisher
Jon Gibson
Alvin Lucier
Steven Paul Miller
David Moss**

**Peter Gordon
Edgar Grana
Joan Jonas
Frank Lima
Meredith Monk
Lucio Pozzi
Steve Reich
Marta Renzi
and Dancers**

General Admission
Tickets:
\$10 each performance

Advance Purchase
Discount:
\$15 any 2 performances
\$20 all 3 performances

Tickets available,
after Sept. 1, 1984,
From: The Symphony
Space Box Office

Broadway at 95th St.
New York, NY 10025
(212) 864-5400



New Arts Program
support

The New Arts Program would not be in operation without the generous support of its members and sustaining sponsors.

sustaining sponsors



ESTATE OF JANET GOLOUB

Foundation for Contemporary Performance, NYC

Greenwich Collection Ltd.

Long, Barrell & Co. Ltd.

Certified Public Accountants
1150 Berkshire Blvd, Suite 240
Reading, Pa. 610-779-6000

Meet the Composer, NYC

Funding for Meet the Composer Inc. is provided with the support of the Pennsylvania Council on the Arts, ASCAP, the Virgil Thompson Foundation, and the National Endowment for the Arts

Phaedrus Foundation, NYC

St. John's United Church of Christ

N. Whiteoak and W. Walnut Sts.
Kutztown, Pa.

Sorrelli Jewelry

220 W. Main St, Kutztown, Pa.
610-894-9857

White Crow Paper Mill

Custom Papermakers
Fleetwood, Pa. 610-944-9061



This project was supported by the Pennsylvania Council on the Arts, a state agency, through its regional arts funding partnership, Pennsylvania Partners in the Arts (PPA). State government funding for the arts depends upon annual appropriation by the Commonwealth of Pennsylvania and support from the National Endowment for the Arts, a federal agency. PPA is administered in this region by the Berks Art Council.

business sponsors

Please patronize these local businesses who help fund NAP exhibitions and performances. Some offer discounts to our members.

Adam n' Eve Boutique

309 W. Main Street, Kutztown
Tu-F 10:00-6:00, Sa 10:00-5:00
610-683-8117

Audiology and Hearing Aid Service

114 S. Laural Street, Kutztown
Virginia Grim 610-683-6108

Berkleigh Eye Care

Marlon G. Burt, O.D.
93 Constitution Blvd., Kutztown
610-683-3888

Betty's

bettyswraps.com
129 W. Main Street, Kutztown
610-621-2642
Wraps, smoothies, salads, soups

Cagefreedesign.com

Fine art, digital restoration,
photography
Emily Branch 610-413-9565

Campus Inn

Old Route 222, Kutztown
610-683-8721

Colorfin

PanPastel.com | SofftArt.com
Headquarters in Kutztown
484-646-9900
Makers of PanPastel™ ultra-soft
painting pastels and Sofft™ Tools,
fine art and craft tools

East Penn Manufacturing

Lyon Station 19536-0147

**First National Bank
in Fleetwood**

Main & Franklin Sts, Fleetwood
610-944-7676

Global Libations

546 Noble St., Kutztown
484-646-9683
Roasting the finest fair-trade/
organic coffee daily
10% off order with NAP mem. card

**Cheryl A. Haughney
Realtor®, ABR, SRS**

LV and Berks residential specialist
for Berkshire Hathaway/
Fox & Roach, Realtors® ABR, SRS
484-225-9437

Main Street Inn

Boutique Hotel
401 W. Main Street, Kutztown
610-683-0401

Mark's Sandwich Shop

123 W. Main Street, Kutztown
7 days a week / 10:00-10:00
610-683-3626
A Kutztown tradition since 1966

Mr. Food Convenience Store

342 W. Main Street, Kutztown
7 days a week / 6:30 am-11:00 pm
610-683-7315

Pretty Dirty Ladies

prettydirtyladies.com
Toll-free 1-877-944-2211
Garden design and maintenance

Radius

radiustoothbrush.com
1-800 626-6223

SOS Business Machines

28 S. Center Avenue, Leesport
M-F 9:30-5:00
610-926-1299
Canon copier/fax sales,
service, supplies

**Silver Maple Veterinary
Clinic**

silvermaplevet.com
Route 222, Kutztown
610-683-7988
Dogs, cats, ferrets, horses

Uptown Espresso Bar

466 W. Main Street, Kutztown
M-F 7:00 am-9:00 pm
Sa 8:00 am-7:00 pm
610-683-6401
10% off order with NAP mem. card

If you are a local business that wants to be recognized as an NAP supporter, call us to be included here.

—610-683-6440—



PHOTO: ANNIE LIEBOVITZ

“New Arts is
a nonacademic
approach to
a nonacademic
subject,
and it works!”

—PHILIP GLASS